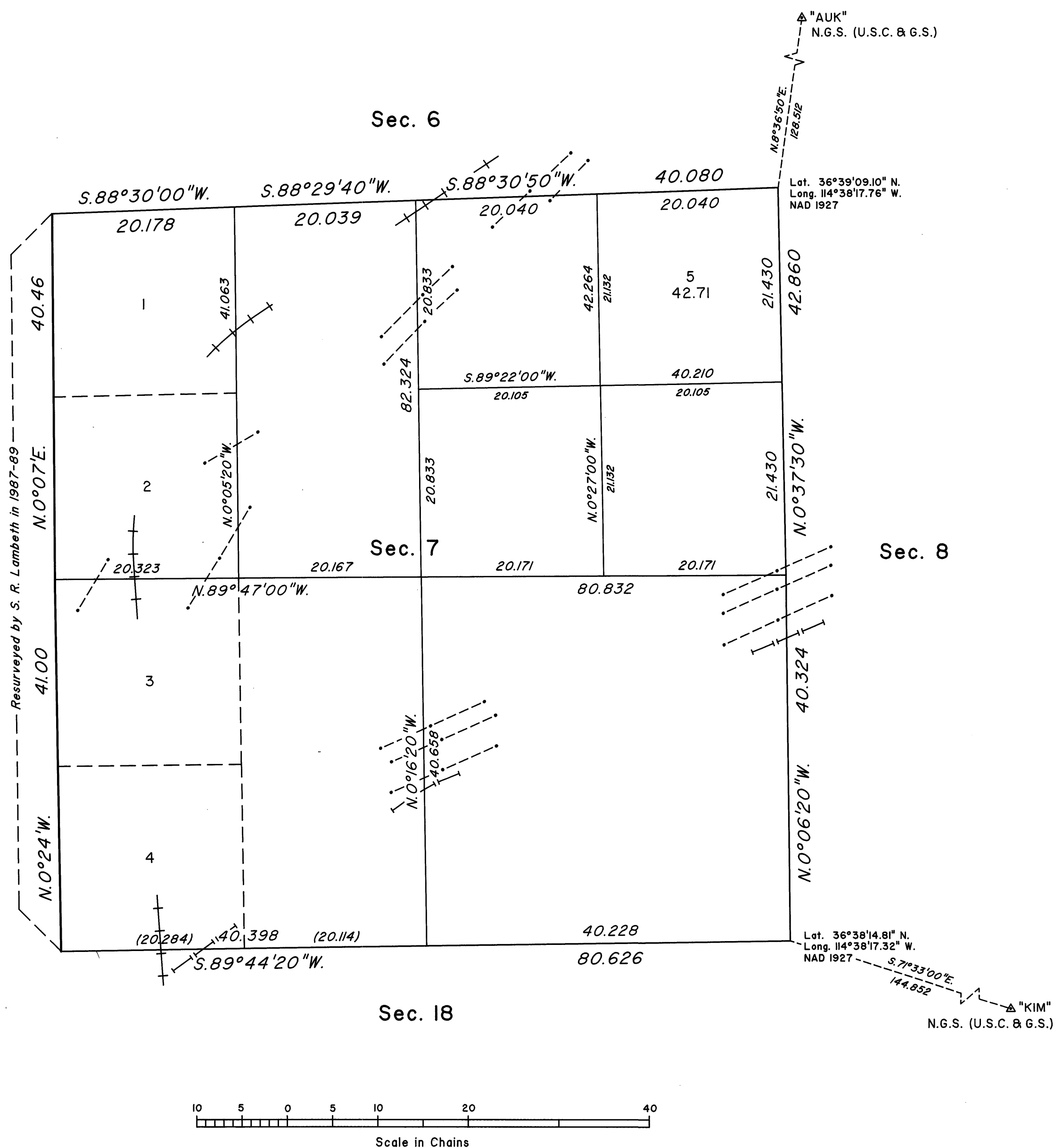
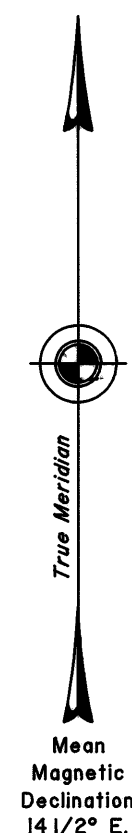


TOWNSHIP 15 SOUTH, RANGE 66 EAST, OF THE MOUNT DIABLO MERIDIAN, NEVADA
DEPENDENT RESURVEY AND SUBDIVISION



A history of surveys is contained in the field notes.

This plat represents the dependent resurvey of a portion of the subdivisional lines designed to restore the corners in their true original locations according to the best available evidence, and the subdivision of section 7, Township 15 South, Range 66 East, Mount Diablo Meridian, Nevada.

Except as indicated hereon, the lottings and areas are as shown on the plat approved June 13, 1881.

Survey executed by Richard A. Zaninovich, Cadastral Surveyor, beginning December 5, 1994, and completed December 13, 1994, pursuant to Special Instructions dated December 2, 1994, for Group No. 751, Nevada.

UNITED STATES DEPARTMENT OF THE INTERIOR
BUREAU OF LAND MANAGEMENT

Reno, Nevada July 5, 1995

This plat is strictly conformable to the approved field notes, and the survey, having been correctly executed in accordance with the requirements of law and the regulations of this Bureau, is hereby accepted.

For the Director

John L. Parrish
Chief Cadastral Surveyor, Nevada

T.15S.,R.66E.,M.D.M.