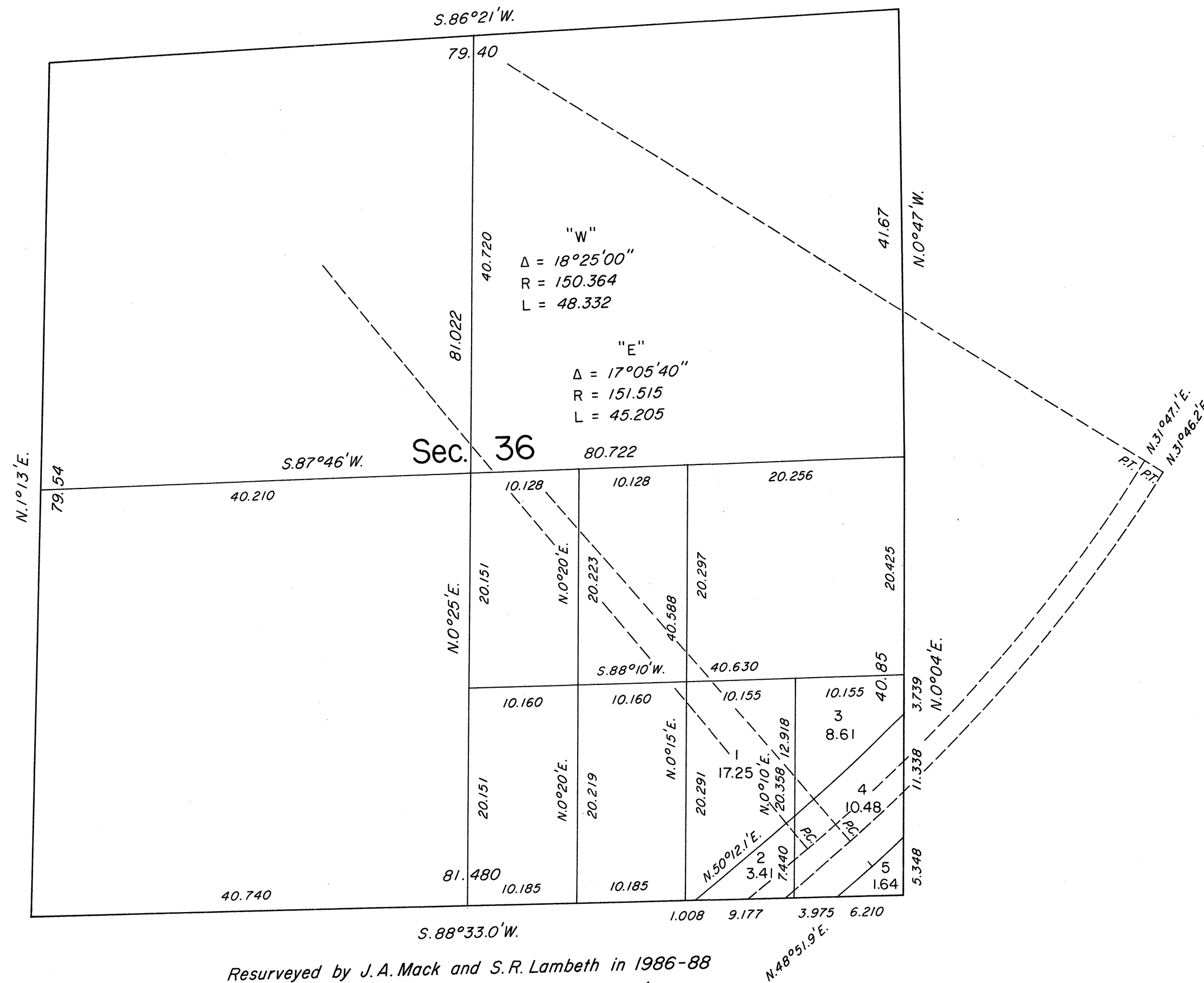
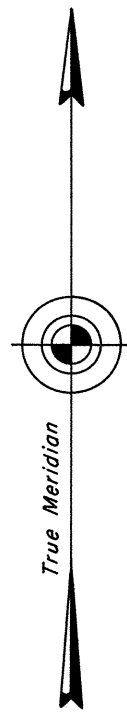


ORIGINAL

Sheet No. 6 of 6 Sheets

TOWNSHIP 15 SOUTH, RANGE 65 EAST, OF THE MOUNT DIABLO MERIDIAN, NEVADA  
ENLARGED DIAGRAM

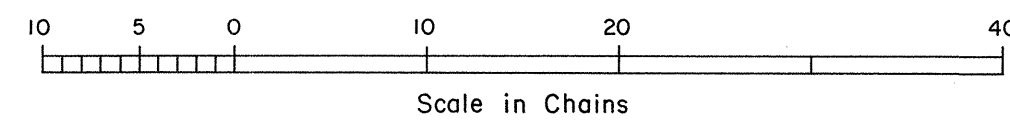


Reference should be made to Sheet No. 1 for survey information.

UNITED STATES DEPARTMENT OF THE INTERIOR  
BUREAU OF LAND MANAGEMENT  
Reno, Nevada May 14, 1990

This plat is strictly conformable to the approved field notes, and the survey, having been correctly executed in accordance with the requirements of law and the regulations of this Bureau, is hereby accepted.

For the Director  
*John S. Parish*  
Chief Cadastral Surveyor



INTERSTATE  
15 R/W

T.15S., R.65E., M.D.M.

JRM