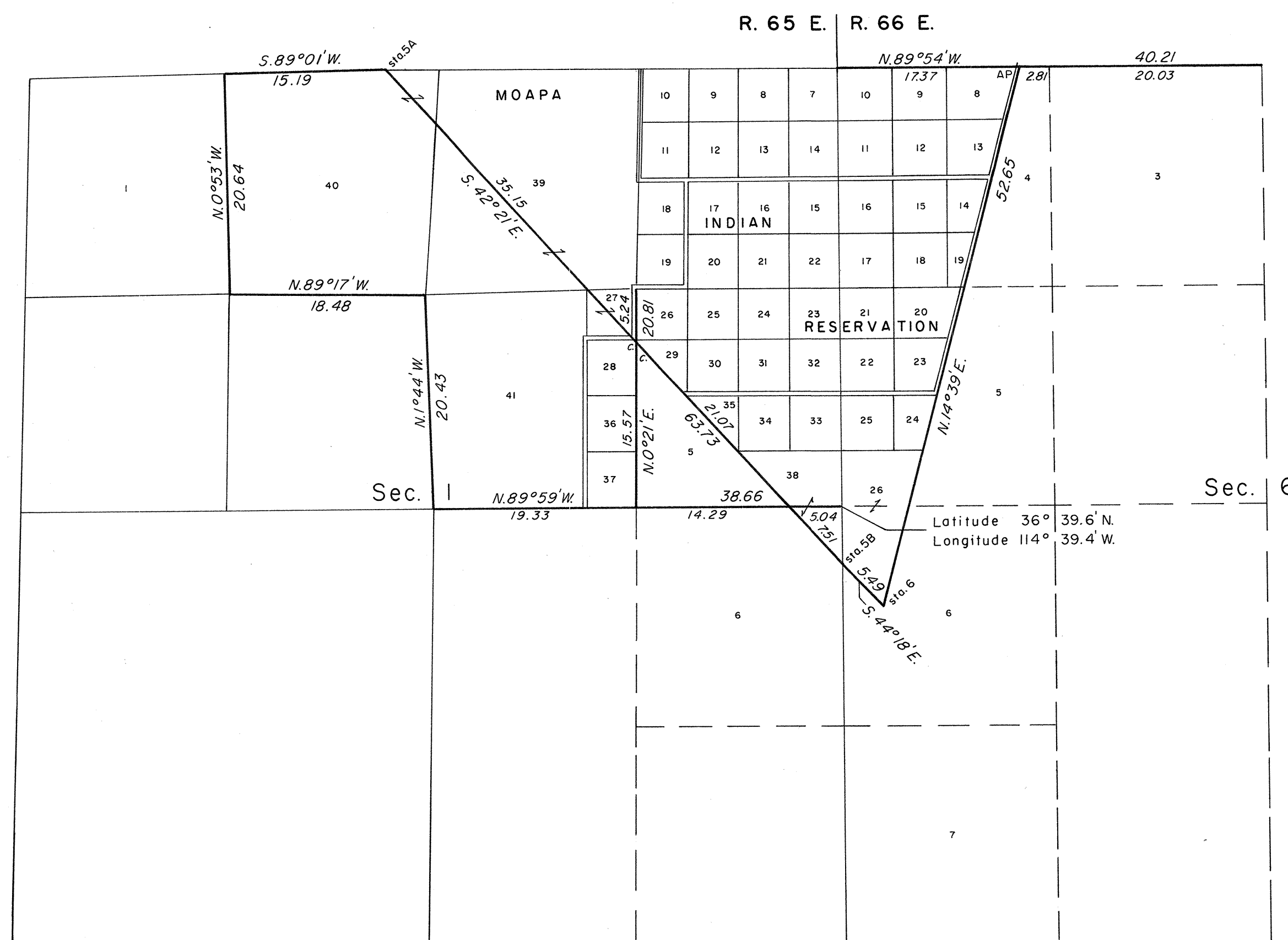
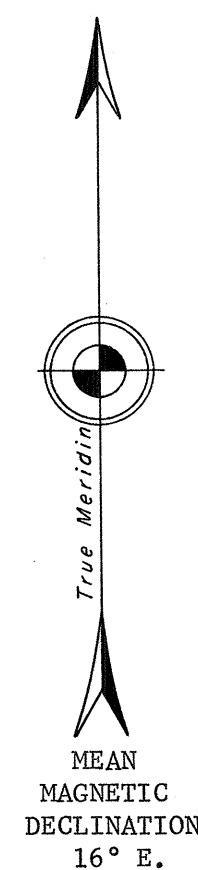


ORIGINAL

OFFICIALLY FILED
NEVADA STATE OFFICE
10:00 AM MAY 19, 1981

TOWNSHIPS 15 SOUTH, RANGES 65 AND 66 EAST, OF THE MOUNT DIABLO MERIDIAN, NEVADA

DEPENDENT RESURVEY



A history of surveys is contained in the field notes.

This plat represents the dependent resurvey of a portion of the boundary of the Moapa Indian Reservation designed to restore the corners in their true original location according to the best available evidence, in Tps. 15 S., Rs 65 and 66 E., and the subdivision of section 1, T. 15 S., R. 65 E., Mount Diablo Meridian, Nevada.

The lottings and areas are as shown on the plats approved December 24, 1881, and May 16, 1913.

A portion of the north boundary of T. 15 S., R. 65 E., was resurveyed concurrently in T. 14 S., R. 65 E., and a portion of the north boundary of T. 15 S., R. 66 E., was resurveyed concurrently in T. 14 S., R. 66 E., under this same group.

Survey executed by Jerry E. Barrett, Cadastral Surveyor, beginning January 31, 1975, and completed March 10, 1975, pursuant to Special Instructions dated January 15, 1975, for Group No. 517, Nevada.

UNITED STATES DEPARTMENT OF THE INTERIOR
BUREAU OF LAND MANAGEMENT
Denver, Colorado April 24, 1981

This plat is strictly conformable to the approved field notes, and the survey, having been correctly executed in accordance with the requirements of law and the regulations of this Bureau, is hereby accepted.

For the Director

Gary S. Spright

Acting Chief, Cadastral Survey
Examination and Approval Staff