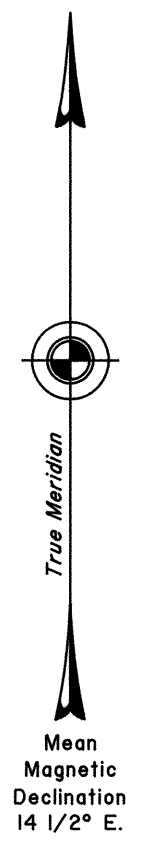
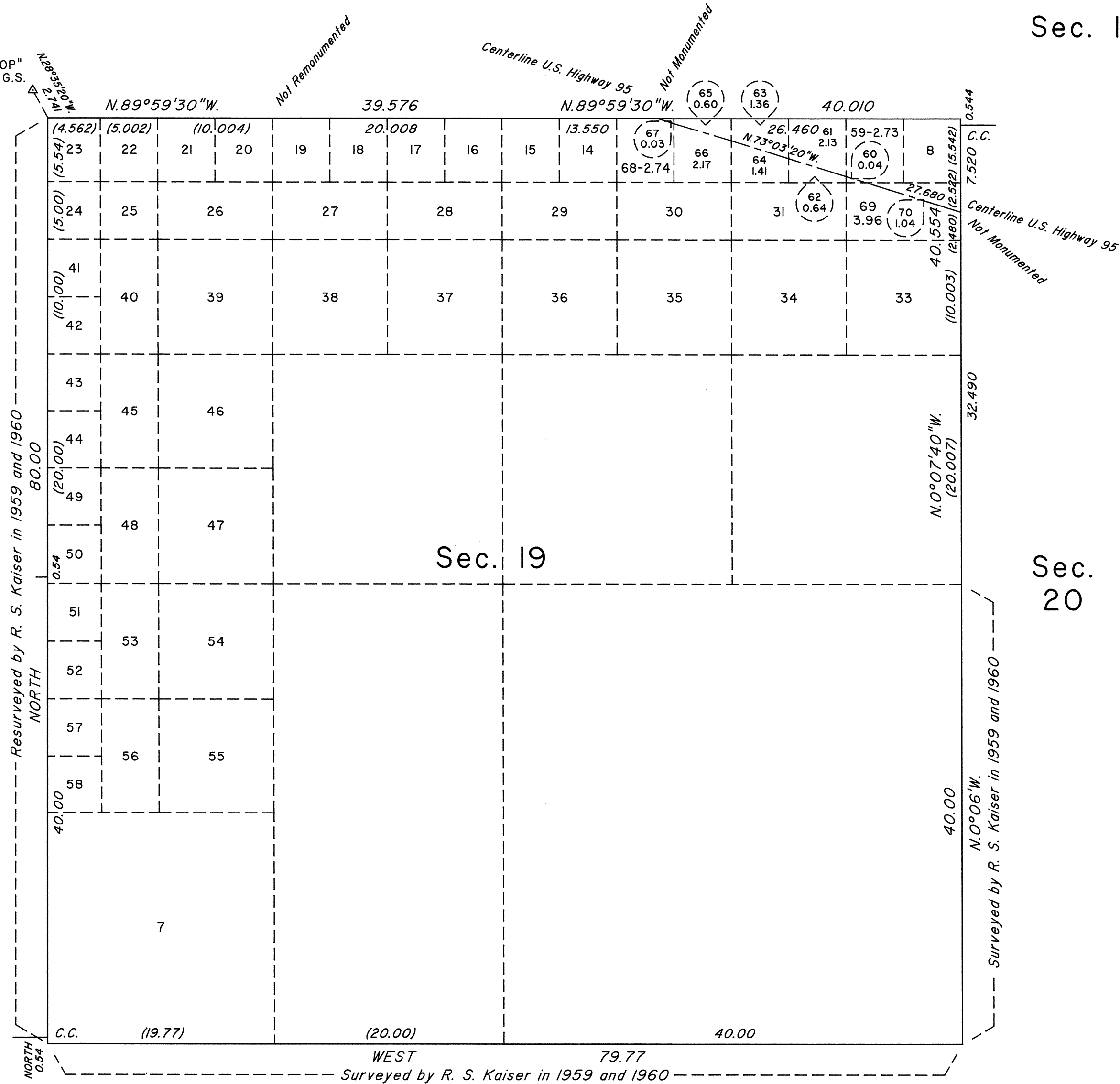


TOWNSHIP 15 SOUTH, RANGE 50 EAST, OF THE MOUNT DIABLO MERIDIAN, NEVADA
ENLARGED DIAGRAM OF SECTION 19

OFFICIALLY FILED
NEVADA STATE OFFICE
at 10:00 AM on October 12, 2000



Sec. 24



Sec. 17

Sec. 20

Reference should be made to Sheet No. 1 for survey information.

UNITED STATES DEPARTMENT OF THE INTERIOR
BUREAU OF LAND MANAGEMENT

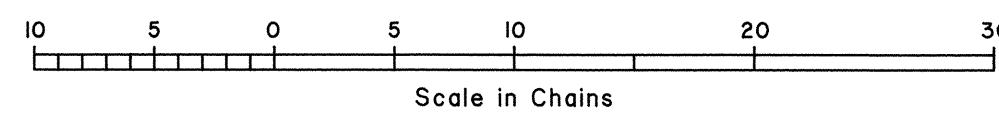
Reno, Nevada October 11, 2000

This plat is strictly conformable to the approved field notes, and the survey, having been correctly executed in accordance with the requirements of law and the regulations of this Bureau, is hereby accepted.

For the Director

Mary J. M. Hartzel

Acting Chief Cadastral Surveyor, Nevada



Sec. 25

T.15S., R.50E., M.D.M.