

TOWNSHIP 15 SOUTH, RANGE 50 EAST, OF THE MOUNT DIABLO MERIDIAN, NEVADA
DEPENDENT RESURVEY AND METES-AND-BOUNDS SURVEY

OFFICIALLY FILED
NEVADA STATE OFFICE
at 10:00 AM on October 12, 2000

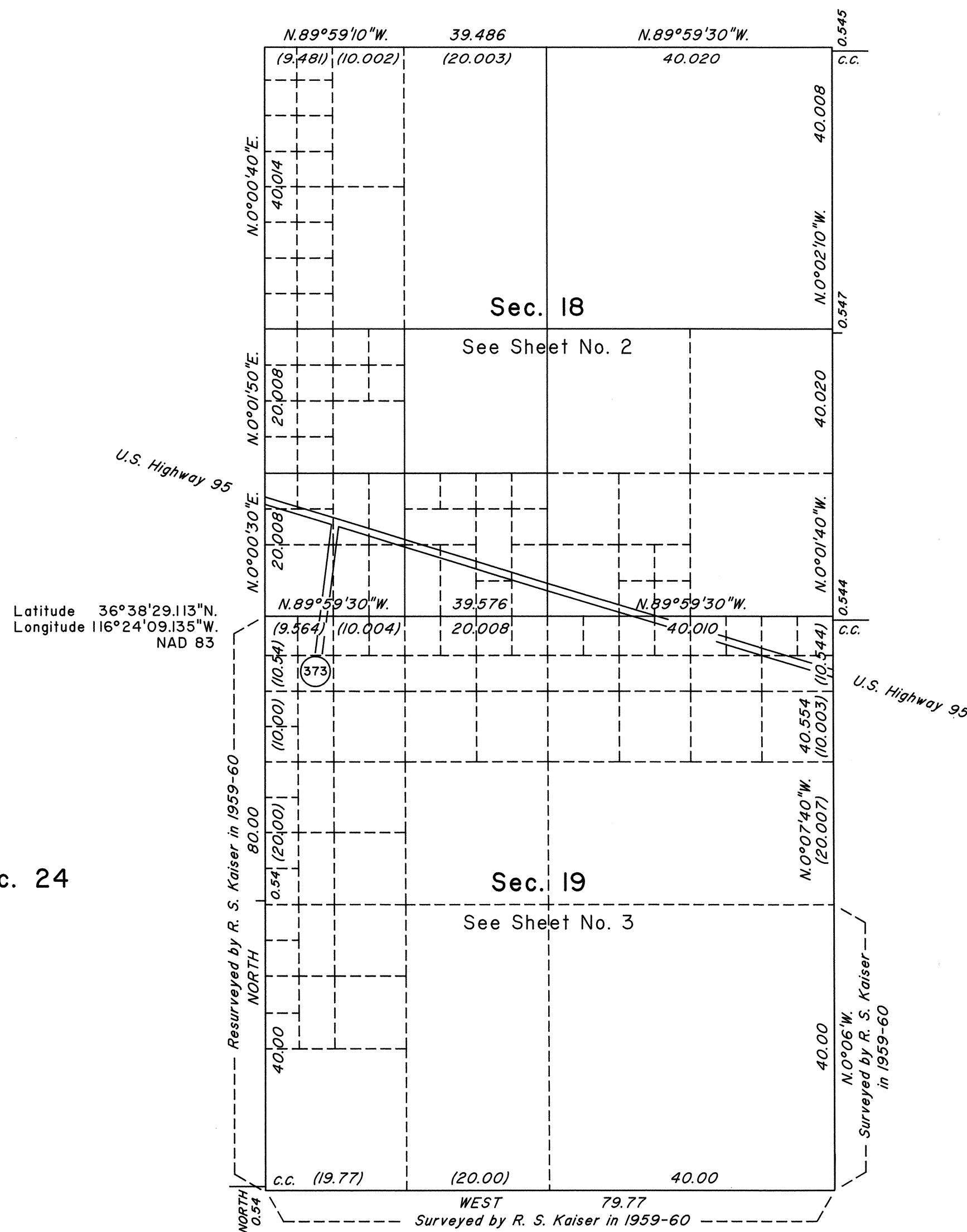
Sec. 8

Sec. 17

Sec. 20

Sec. 24

Sec. 25



A history of surveys is contained in the field notes.

This plat, in 3 sheets, represents the dependent resurvey of a portion of the west boundary, a portion of the subdivisional lines and the subdivision of a portion of section 18, designed to restore the corners in their true original locations according to the best available evidence, and the metes-and-bounds survey of the centerline of U.S. Highway 95, through sections 18 and 19, Township 15 South, Range 50 East, Mount Diablo Meridian, Nevada.

See Sheets Nos. 2 and 3 for enlargements of sections 18 and 19.

Except as indicated hereon, the areas are as shown on the plat accepted August 19, 1948, the supplemental plat accepted December 21, 1956, the supplemental plat accepted January 27, 1959, the plat approved January 18, 1962, and the supplemental plat accepted November 19, 1964.

Survey executed by Richard A. Zaninovich, Cadastral Surveyor, beginning March 14, 2000, and completed August 30, 2000, pursuant to Special Instructions dated March 13, 2000, and Supplemental Special Instructions dated August 28, 2000, for Group No. 788, Nevada.

UNITED STATES DEPARTMENT OF THE INTERIOR
BUREAU OF LAND MANAGEMENT

Reno, Nevada October 11, 2000

This plat is strictly conformable to the approved field notes, and the survey, having been correctly executed in accordance with the requirements of law and the regulations of this Bureau, is hereby accepted.

For the Director

Mary J. M. Hartzel

Acting Chief Cadastral Surveyor, Nevada