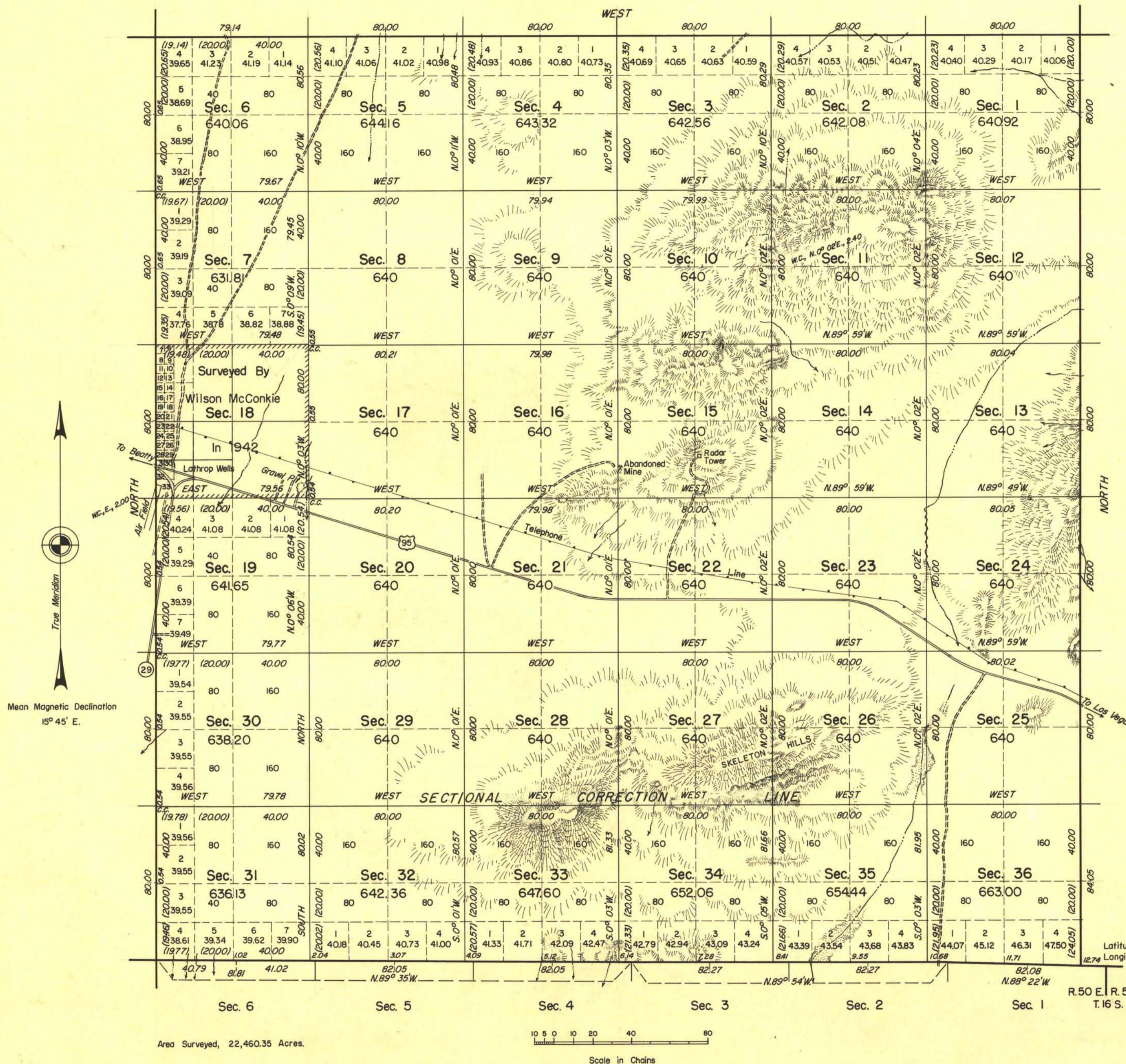


TOWNSHIP 15 SOUTH, RANGE 50 EAST, OF THE MOUNT DIABLO MERIDIAN, NEVADA COMPLETION SURVEY



This plat represents a survey to complete the subdivisional lines of T. 15 S., R. 50 E., Mount Diablo Meridian, Nevada. The lottings and areas are as shown upon the plat approved August 19, 1948, except as shown hereon. History of previous surveys is set forth in the field note record.

Surveys shown hereon were executed by Robert S. Kaiser from December 14, 1959 to February 4, 1960, under special instructions dated August 18, 1959, for Group 386, Nevada.

UNITED STATES DEPARTMENT OF THE INTERIOR
BUREAU OF LAND MANAGEMENT
Washington, D.C. January 18, 1962

This plat is strictly conformable to the approved field notes, and the survey, having been correctly executed in accordance with the requirements of law and the regulations of this Bureau, is hereby accepted.

For the Director

Ed Remington
Chief, Division of Engineering

1944-20

T15S, R50E