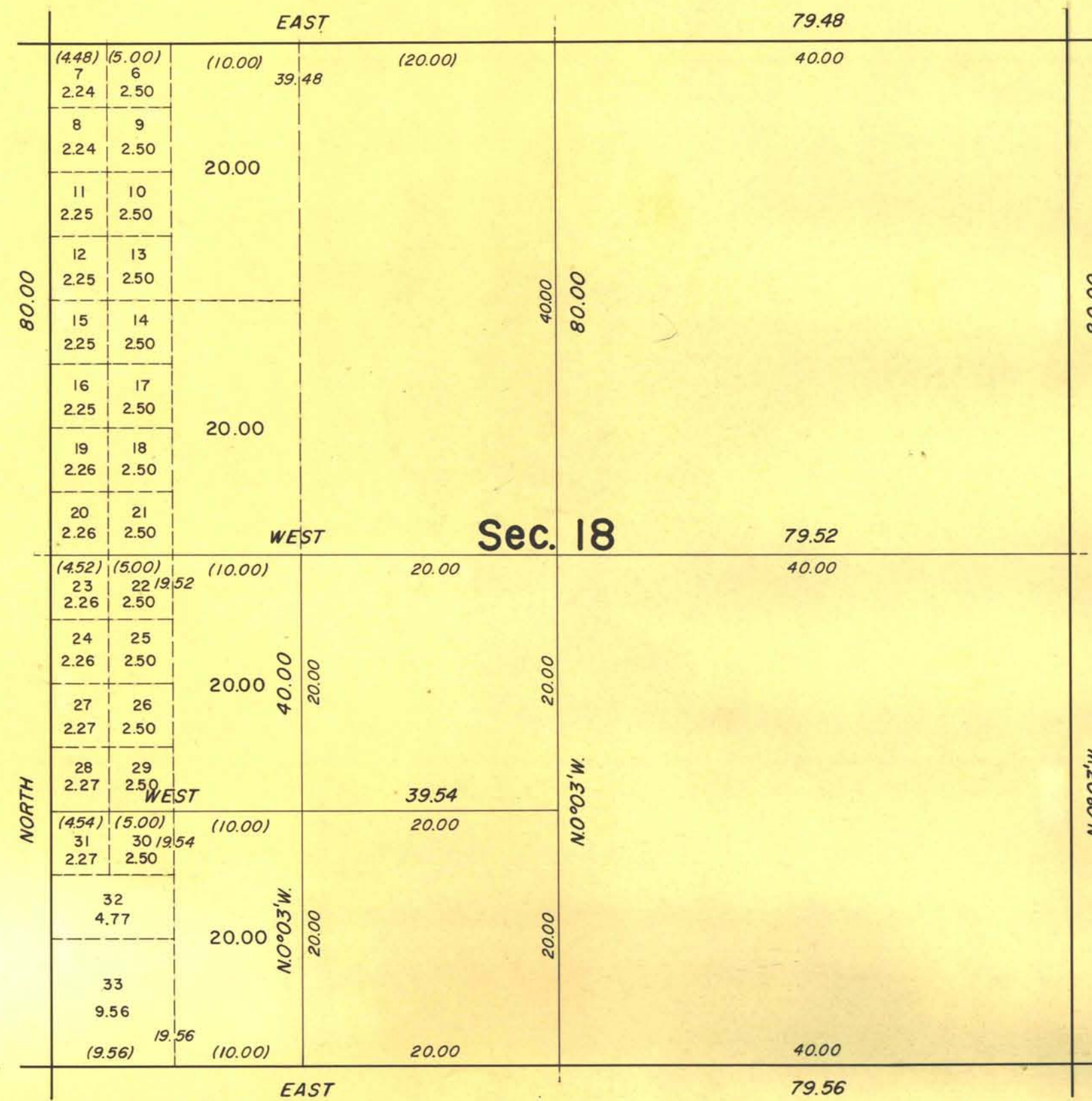


TOWNSHIP 15 SOUTH, RANGE 50 EAST, OF THE MOUNT DIABLO MERIDIAN, NEVADA.
SUPPLEMENTAL PLAT OF SECTION 18



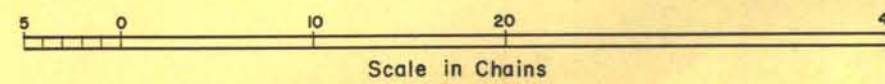
This supplemental plat showing the subdivision of original lots 1, 2, 3, and 5, sec. 18, T. 15 S., R. 50 E., Mount Diablo Meridian, Nevada, is based upon plats accepted August 19, 1948 and December 21, 1956.

UNITED STATES DEPARTMENT OF THE INTERIOR
BUREAU OF LAND MANAGEMENT
Washington, D. C. January 27, 1959

This plat, showing amended lottings, is based upon the official records, and having been correctly prepared in accordance with the regulations, is hereby accepted.

For the Director

Earl G. Harrington
Cadastral Engineering Staff Officer



1944-C

T15 S, R 50 E

F.A.H.