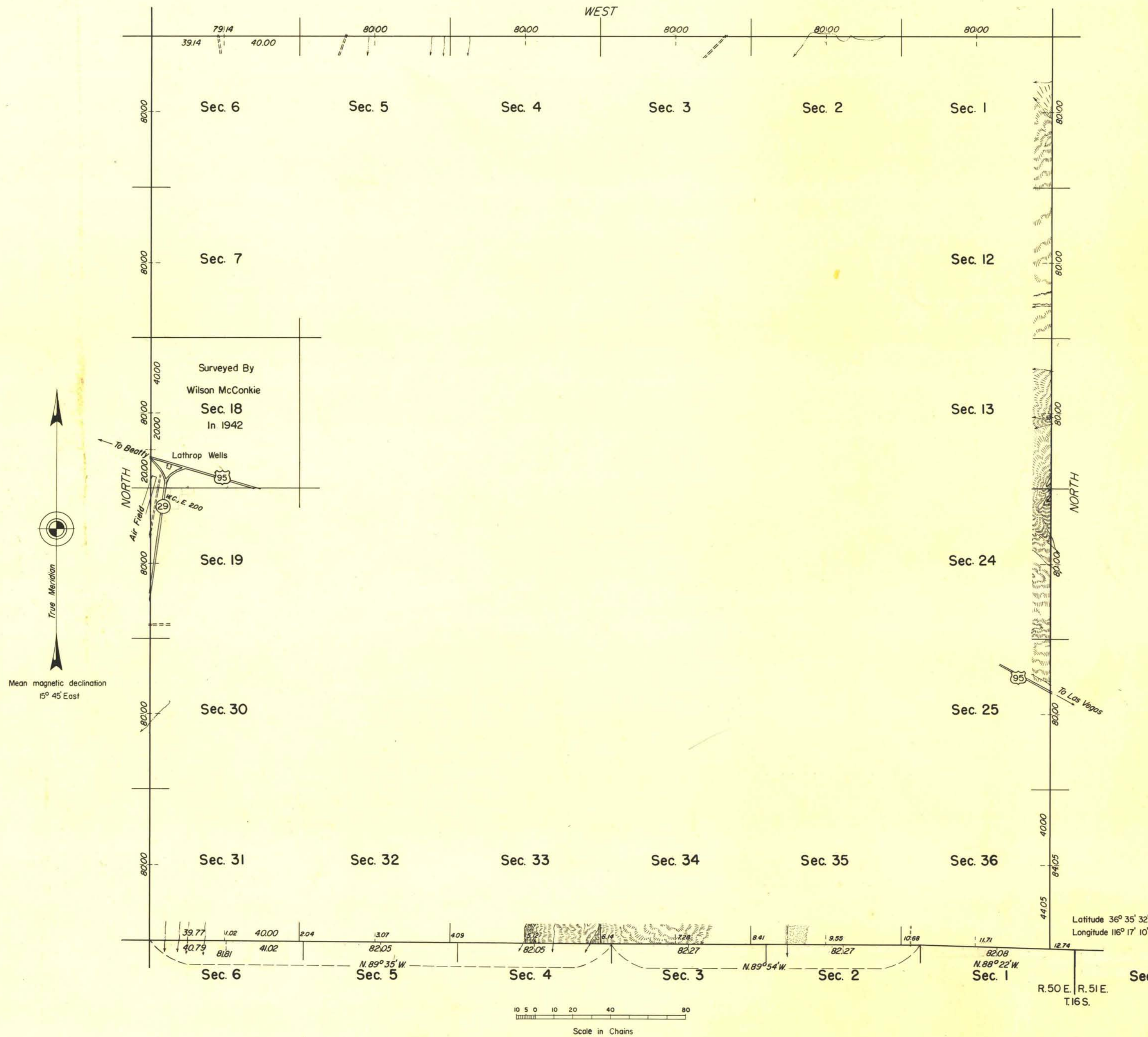


TOWNSHIP 15 SOUTH, RANGE 50 EAST, OF THE MOUNT DIABLO MERIDIAN, NEVADA



The south boundary was surveyed by E. A. Carter in 1881 and the south four miles of the west boundary and sec. 18 were surveyed by Wilson McConkie in 1942.

This plat represents a dependent re-survey of the north boundary of T. 16 S., R. 50 E., designed to restore the corners in their original locations according to the best available evidence with the establishment of new corners thereon for the south boundary of T. 15 S., R. 50 E.; survey of the north and east boundaries and a portion of the west boundary of T. 15 S., R. 50 E., Mount Diablo Meridian, Nevada.

Survey executed by Horace G. Parker March 11 to 18, 1957, under special instructions dated January 18, 1957, for Group 368, Nevada.

UNITED STATES DEPARTMENT OF THE INTERIOR
BUREAU OF LAND MANAGEMENT
Washington, D. C. May 16, 1958

This plat is strictly conformable to the approved field notes, and the survey, having been correctly executed in accordance with the requirements of law and the regulations of this Bureau, is hereby accepted.

For the Director

Earl G. Harrington
Cadastral Engineering Staff Officer

Latitude 36° 35' 32" N.
Longitude 116° 17' 10" W.

R. 50 E. | R. 51 E.
T. 16 S.

3