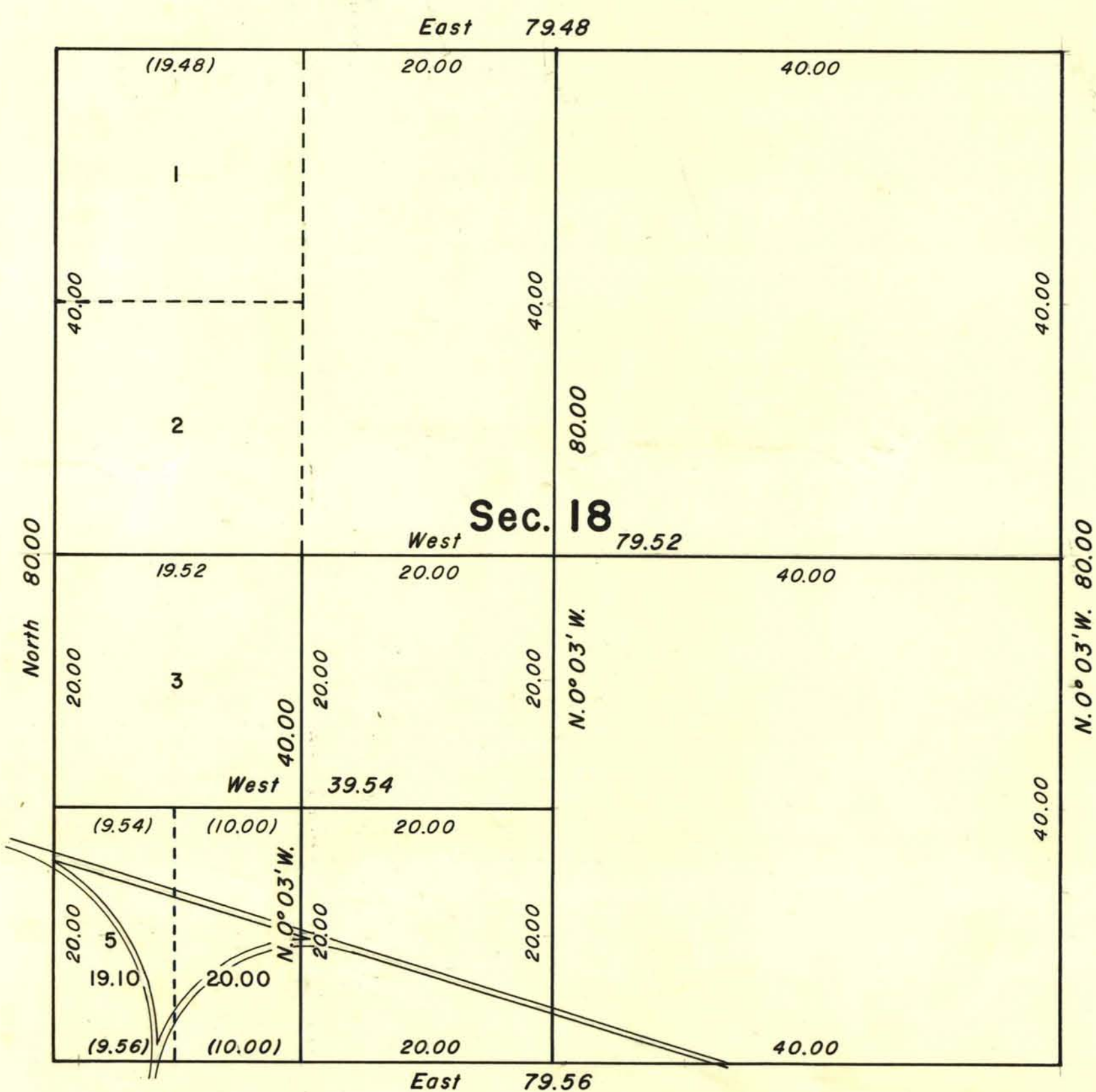


TOWNSHIP 15 SOUTH, RANGE 50 EAST, OF THE MOUNT DIABLO MERIDIAN, NEVADA.

SUPPLEMENTAL PLAT



This plat, showing a subdivision of original lot 4, section 18, T. 15 S., R. 50 E., Mount Diablo Meridian, Nevada, is based upon the plat accepted August 19, 1948.

UNITED STATES DEPARTMENT OF THE INTERIOR
BUREAU OF LAND MANAGEMENT
Washington, D. C. December 21, 1956

This plat showing amended lottings, having been correctly prepared in accordance with the regulations, is hereby accepted.

For the Director
Carl G. Harrington
Cadastral Engineering Staff Officer