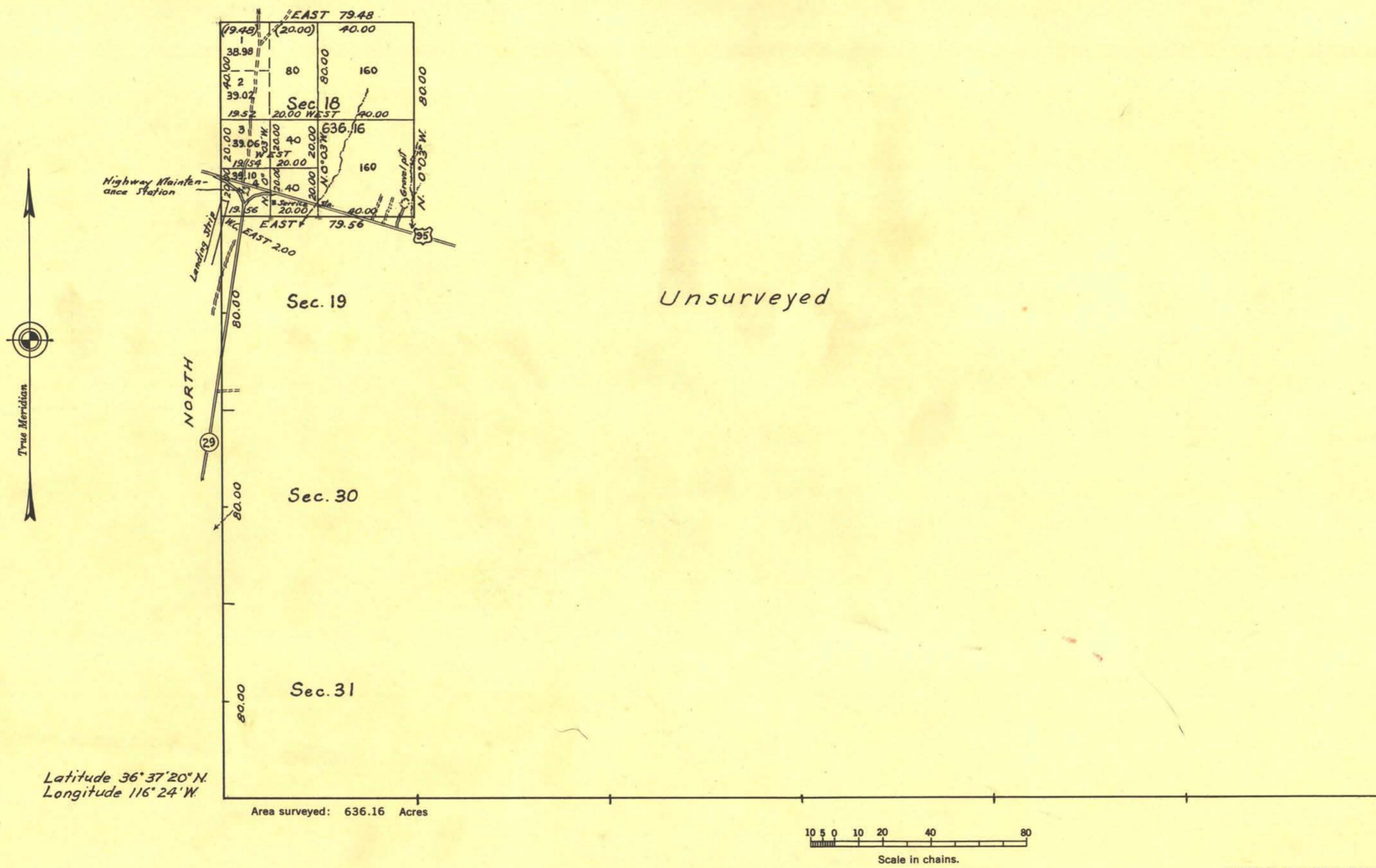


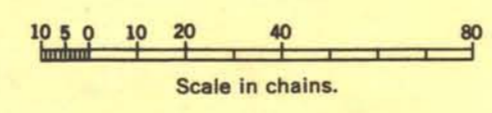
TOWNSHIP No. 15 SOUTH, RANGE No. 50 EAST, MOUNT DIABLO MERIDIAN NEVADA.



Unsurveyed

Latitude 36° 37' 20" N
Longitude 116° 24' W

Area surveyed: 636.16 Acres



HISTORY OF SURVEYS

South boundary surveyed in 1881.
 Survey of a portion of West boundary and subdivisional lines executed by Wilson Mc Conkie, beginning March 28, 1942, and completed April 14, 1942, under special instructions for Group No. 331, dated June 26, 1941.

UNITED STATES DEPARTMENT OF THE INTERIOR
 BUREAU OF LAND MANAGEMENT

Washington, D. C., August 19, 1948

This plat is strictly conformable to the approved field notes, and the survey, having been correctly executed in accordance with the requirements of law and the regulations of this bureau, is hereby accepted.

For the Director:

William F. Richards

Acting Chief, Branch of Surveys

R.E.C.
A981