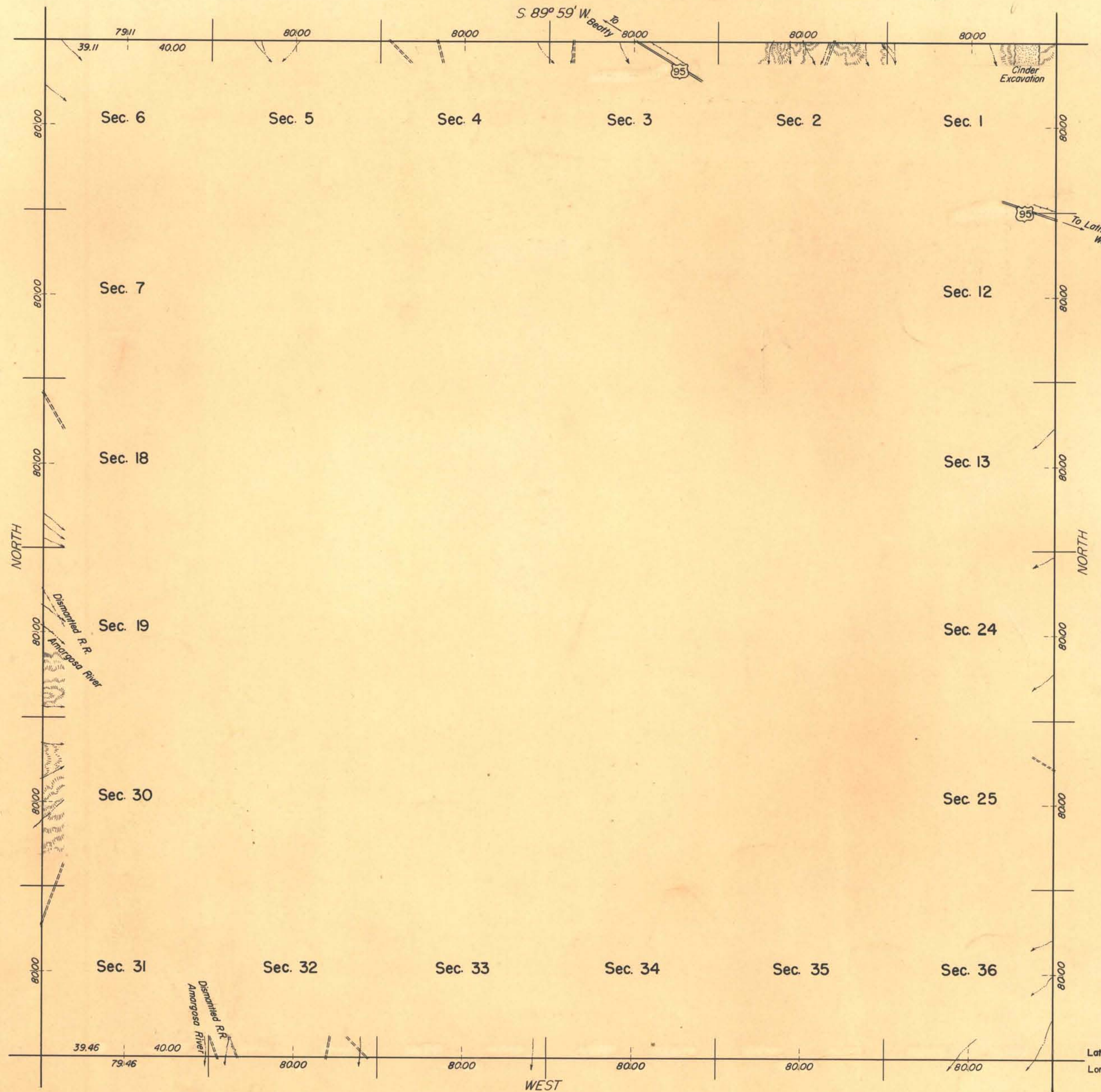


TOWNSHIP 15 SOUTH, RANGE 48 EAST, OF THE MOUNT DIABLO MERIDIAN, NEVADA

INDEPENDENT RESURVEY AND SURVEY



The south boundary was surveyed by Emil Voigt and Walter H. Good in 1921. The east boundary was surveyed concurrently under this same group and the record appears in the field notes of T. 15 S., R. 49 E.

Survey of the west boundary and the independent resurvey of the north boundary was executed by Horace G. Parker, February 11 to 26, 1957, under special instructions dated January 18, 1957, for Group 368, Nevada.

UNITED STATES DEPARTMENT OF THE INTERIOR
BUREAU OF LAND MANAGEMENT
Washington, D. C. May 16, 1958

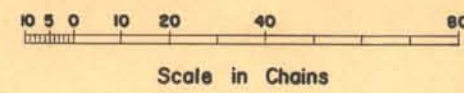
This plat is strictly conformable to the approved field notes, and the survey, having been correctly executed in accordance with the requirements of law and the regulations of this Bureau, is hereby accepted.

For the Director

Earl G. Harrington

Cadastral Engineering Staff Officer

Latitude 36° 35' 36" N.
Longitude 116° 30' 42" W.



Mean magnetic declination
16° 00' East