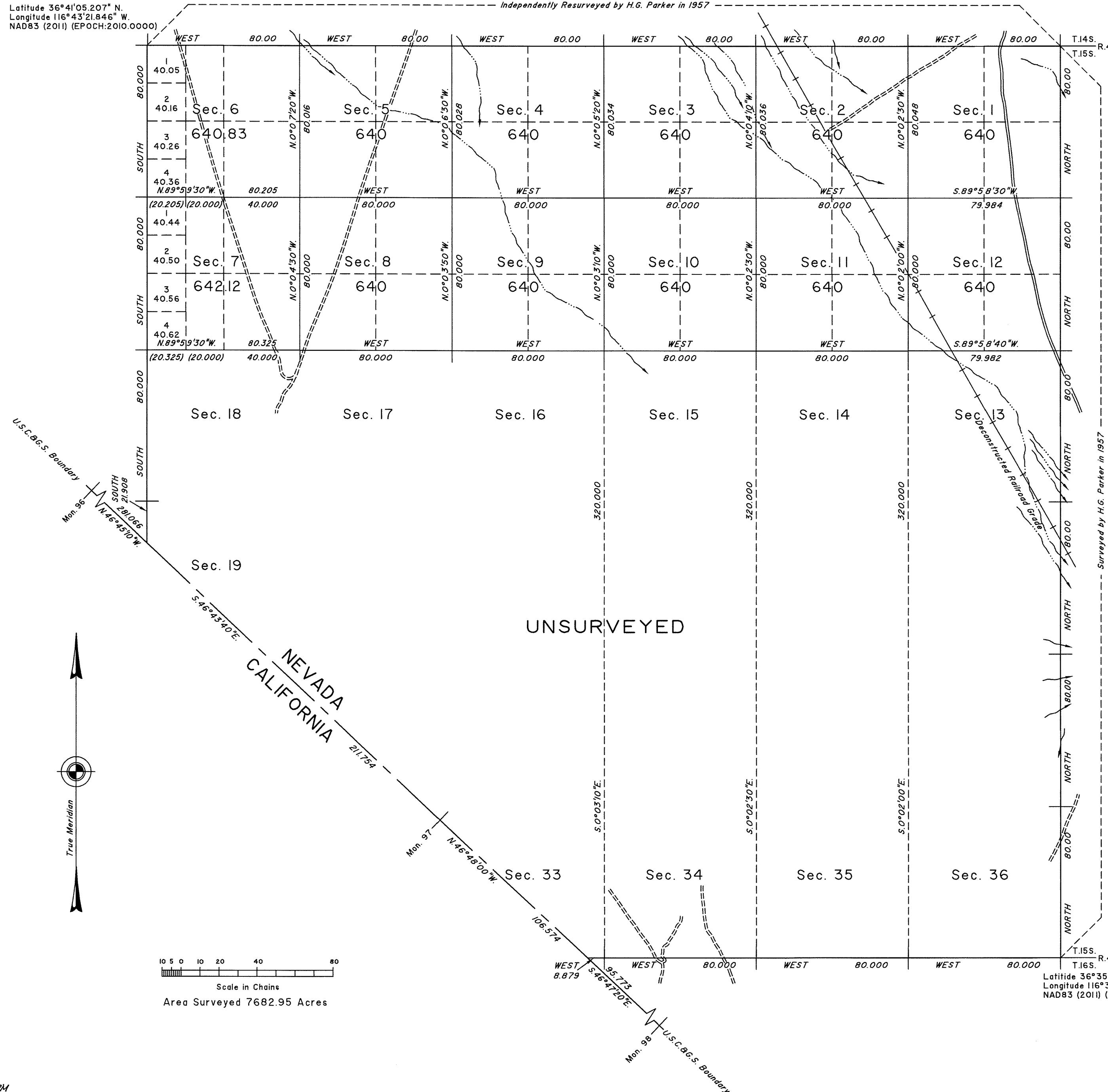


TOWNSHIP 15 SOUTH, RANGE 47 EAST, OF THE MOUNT DIABLO MERIDIAN, NEVADA

SURVEY AND SUBDIVISION

Latitude 36°41'05.207" N.
Longitude 116°43'21.846" W.
NAD83 (2011) (EPOCH:2010.0000)

Independently Resurveyed by H.G. Parker in 1957



A history of surveys is contained in the field notes.

This plat represents the survey of the South and West boundaries and a portion of the subdivision lines, Township 15 South, Range 47 East, Mount Diablo Meridian, Nevada.

Survey executed by Lee T. Wilson, Cadastral Surveyor, beginning January 19, 2022 and completed January 25, 2022, pursuant to Special Instructions dated January 4, 2022, for Group No. 999, Nevada.

UNITED STATES DEPARTMENT OF THE INTERIOR
BUREAU OF LAND MANAGEMENT

Reno, Nevada January 4, 2024

This plat is strictly conformable to the approved field notes, and the survey, having been correctly executed in accordance with the requirements of law and the regulations of this Bureau, is hereby accepted.

For the Director

Mahmud o. Hammaraj

Latitude 36°35'51.986" N.
Longitude 116°36'52.749" W.
NAD83 (2011) (EPOCH:2010.0000) Chief Cadastral Surveyor for Nevada

Scale in Chains
Area Surveyed 7682.95 Acres