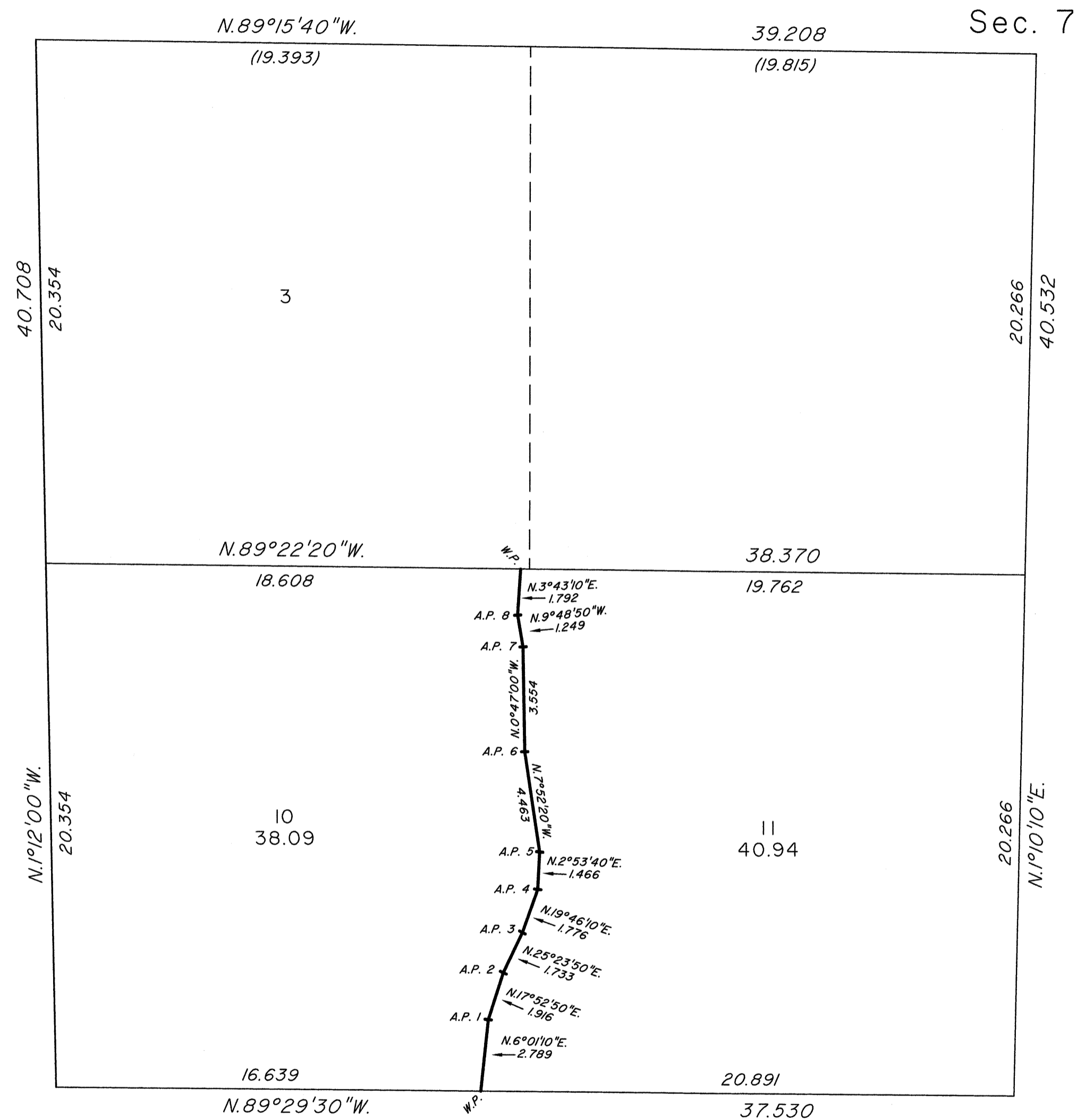


TOWNSHIP 15 NORTH, RANGE 65 EAST, OF THE MOUNT DIABLO MERIDIAN, NEVADA

ENLARGED DIGRAM OF THE SW 1/4 OF SECTION 7

OFFICIALLY FILED
NEVADA STATE OFFICE
at 10:00 AM on DEC 19 2014



Reference should be made to Sheet No. 1 for survey information.

UNITED STATES DEPARTMENT OF THE INTERIOR
BUREAU OF LAND MANAGEMENT

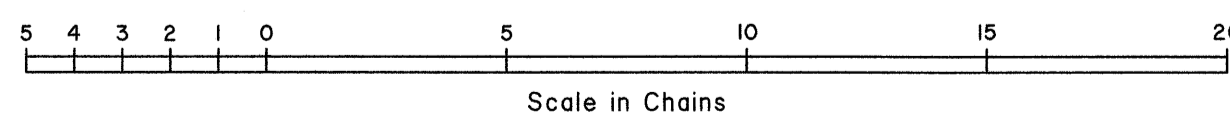
Reno, Nevada December 17, 2014

This plat is strictly conformable to the approved field notes, and the survey, having been correctly executed in accordance with the requirements of law and the regulations of this Bureau, is hereby accepted.

For the Director

Mahand O. Hammami

Chief Cadastral Surveyor for Nevada



CWM