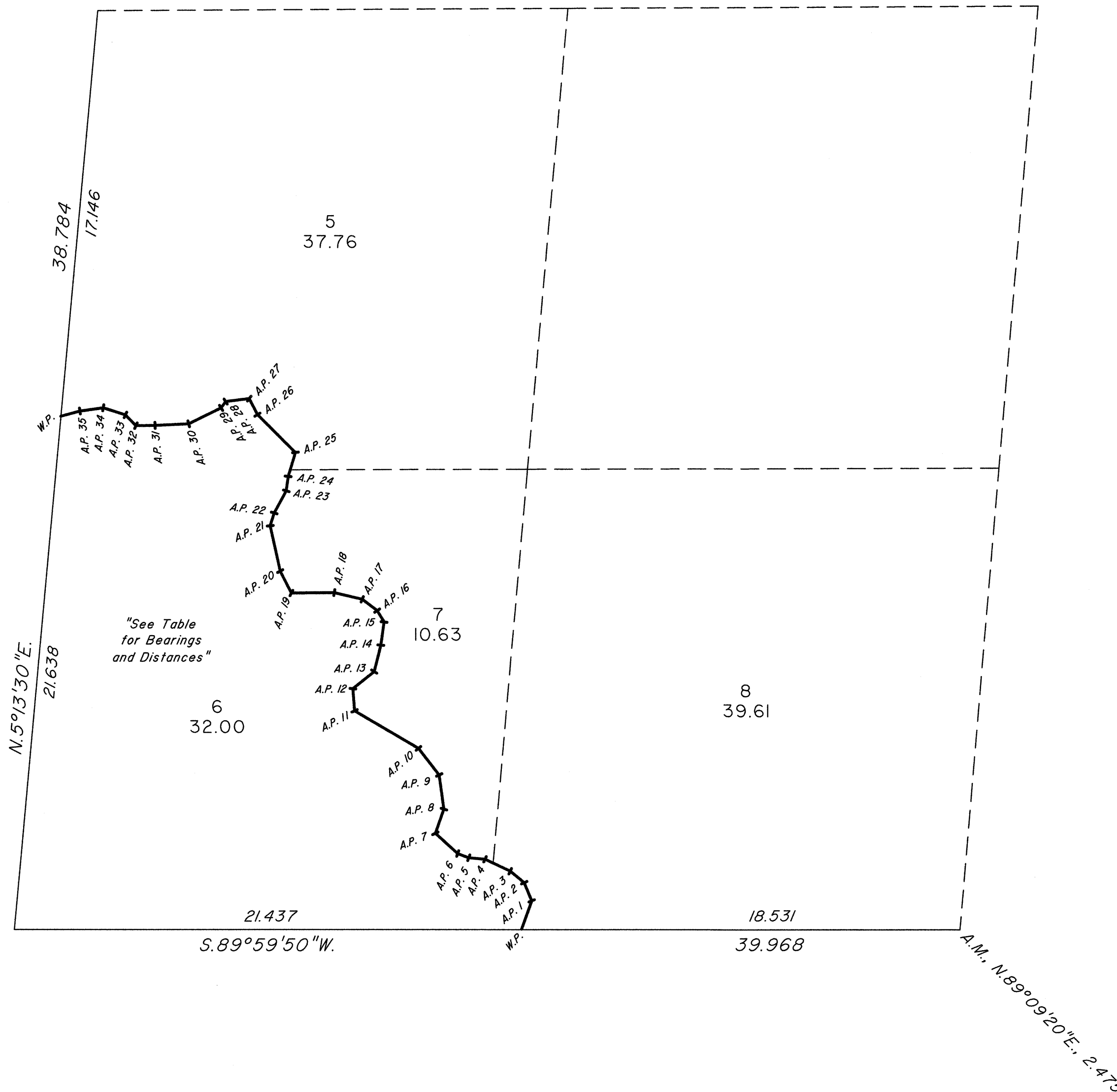
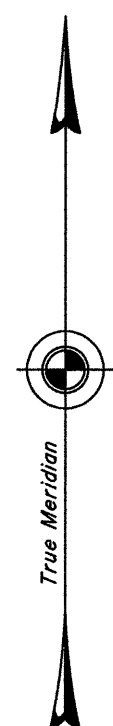


TOWNSHIP 15 NORTH, RANGE 65 EAST, OF THE MOUNT DIABLO MERIDIAN, NEVADA

ENLARGED DIAGRAM OF THE SW1/4 OF SECTION 3

Sec. 3



TABLE

Points	Bearing	Distance
W.P. Sections 3 and 10 to A.P. 1	N.19°21'10"E.	1.283
A.P. 1 to A.P. 2	N.22°32'50"W.	0.829
A.P. 2 to A.P. 3	N.50°51'50"W.	0.763
A.P. 3 to A.P. 4	N.64°50'50"W.	1.180
A.P. 4 to A.P. 5	N.84°42'30"W.	0.691
A.P. 5 to A.P. 6	N.69°31'40"W.	0.500
A.P. 6 to A.P. 7	N.48°02'20"W.	1.269
A.P. 7 to A.P. 8	N.19°25'50"E.	1.078
A.P. 8 to A.P. 9	N.7°55'50"W.	1.446
A.P. 9 to A.P. 10	N.38°11'00"W.	1.416
A.P. 10 to A.P. 11	N.59°45'00"W.	3.133
A.P. 11 to A.P. 12	N.4°16'40"W.	0.929
A.P. 12 to A.P. 13	N.51°41'30"E.	1.151
A.P. 13 to A.P. 14	N.13°59'20"E.	1.145
A.P. 14 to A.P. 15	N.7°54'40"E.	0.979
A.P. 15 to A.P. 16	N.31°09'20"W.	0.559
A.P. 16 to A.P. 17	N.53°07'50"W.	0.795
A.P. 17 to A.P. 18	N.76°36'10"W.	1.211
A.P. 18 to A.P. 19	S.89°28'10"W.	1.816
A.P. 19 to A.P. 20	N.27°18'30"W.	1.034
A.P. 20 to A.P. 21	N.12°35'50"W.	1.950
A.P. 21 to A.P. 22	N.17°10'00"E.	0.560
A.P. 22 to A.P. 23	N.28°52'50"E.	1.060
A.P. 23 to A.P. 24	N.7°26'10"E.	0.617
A.P. 24 to A.P. 25	N.16°59'00"E.	1.051
A.P. 25 to A.P. 26	N.45°30'40"W.	2.254
A.P. 26 to A.P. 27	N.27°10'20"W.	0.759
A.P. 27 to A.P. 28	S.82°49'10"W.	1.006
A.P. 28 to A.P. 29	S.35°50'00"W.	0.326
A.P. 29 to A.P. 30	S.63°59'00"W.	1.522
A.P. 30 to A.P. 31	S.87°27'10"W.	1.425
A.P. 31 to A.P. 32	S.88°55'50"W.	0.809
A.P. 32 to A.P. 33	N.44°35'50"W.	0.632
A.P. 33 to A.P. 34	N.72°20'00"W.	0.984
A.P. 34 to A.P. 35	S.81°53'40"W.	0.992
A.P. 35 to W.P. Sections 3 and 4	S.74°55'10"W.	0.805

Reference should be made to Sheet No. 1 for survey information.

UNITED STATES DEPARTMENT OF THE INTERIOR  
BUREAU OF LAND MANAGEMENT

Reno, Nevada December 17, 2014

This plat is strictly conformable to the approved field notes, and the survey, having been correctly executed in accordance with the requirements of law and the regulations of this Bureau, is hereby accepted.

For the Director

*Michael O. Hammering*

Chief Cadastral Surveyor for Nevada

