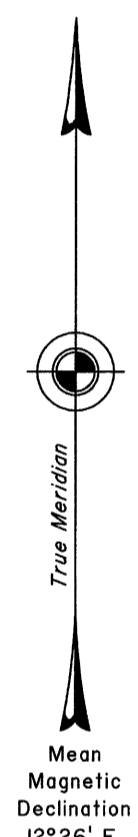
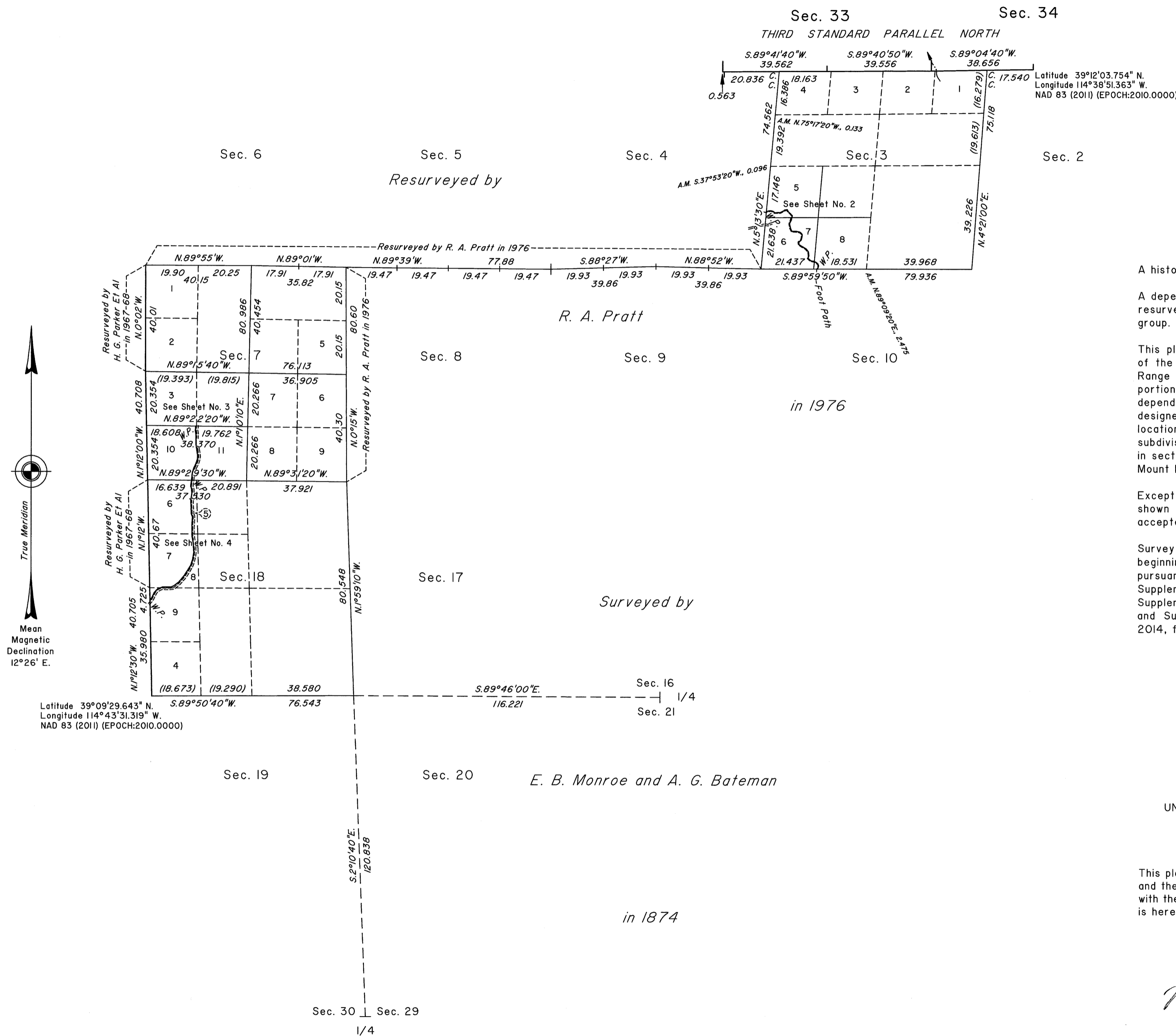


# TOWNSHIP 15 NORTH, RANGE 65 EAST, OF THE MOUNT DIABLO MERIDIAN, NEVADA

## DEPENDENT RESURVEY, CORRECTIVE DEPENDENT RESURVEY, SUBDIVISION AND METES-AND-BOUNDS SURVEY

OFFICIALLY FILED  
NEVADA STATE OFFICE  
at 10:00 AM on  
DEC 19 2014



Latitude 39°09'29.643" N.  
Longitude 114°43'31.319" W.  
NAD 83 (2011) (EPOCH:2010.0000)

A history of surveys is contained in the field notes.

A dependent resurvey of a portion of the west boundary was resurveyed concurrently under T. 15 N., R. 64 E., of this group.

This plat, in 4 sheets, represents the dependent resurvey of the Third Standard Parallel North, through a portion of Range 65 East, a portion of the west boundary and a portion of the subdivisional lines and the corrective dependent resurvey of a portion of subdivisional lines designed to restore the corners in their true original locations according to the best available evidence, the subdivision of section 7 and the metes-and-bounds surveys in sections 3, 7 and 18, Township 15 North, Range 65 East, Mount Diablo Meridian, Nevada.

Except as indicated hereon, the lottings and areas are as shown on the plat approved May 4, 1875 and the plat accepted August 9, 1978.

Survey executed by Joseph J. Johnson, Cadastral Surveyor, beginning July 21, 2013 and completed December 11, 2014, pursuant to Special Instructions dated July 18, 2013, Supplemental Special Instructions dated May 21, 2014, Supplemental Special Instructions dated November 17, 2014 and Supplemental Special Instructions dated December 10, 2014, for Group No. 927, Nevada.

UNITED STATES DEPARTMENT OF THE INTERIOR  
BUREAU OF LAND MANAGEMENT

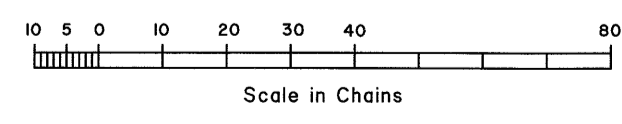
Reno, Nevada December 17, 2014

This plat is strictly conformable to the approved field notes, and the survey, having been correctly executed in accordance with the requirements of law and the regulations of this Bureau, is hereby accepted.

For the Director

*Michael C. Harman*

Chief Cadastral Surveyor for Nevada



CWM