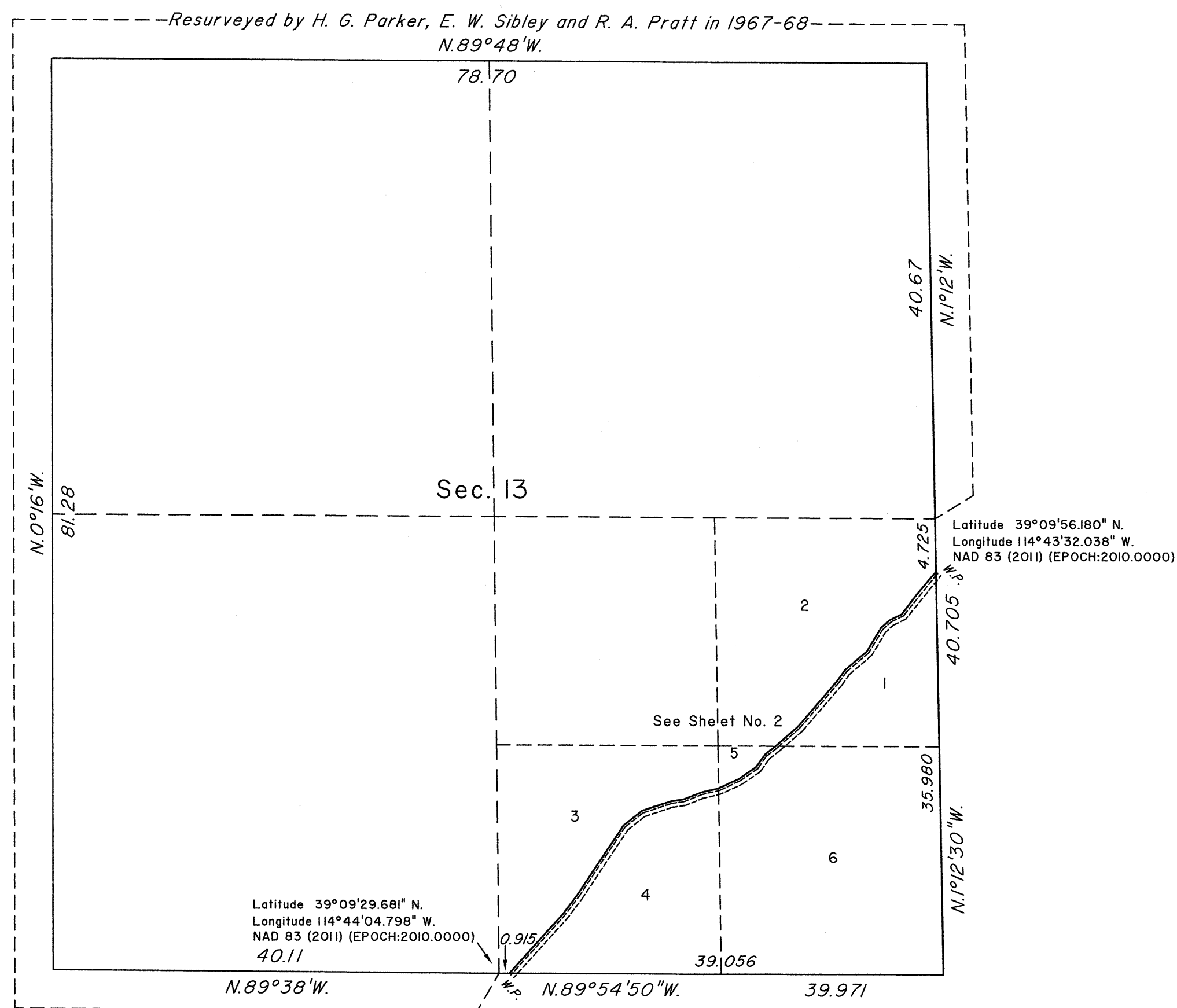


TOWNSHIP 15 NORTH, RANGE 64 EAST, OF THE MOUNT DIABLO MERIDIAN, NEVADA

DEPENDENT RESURVEY AND METES-AND-BOUNDS SURVEY

OFFICIALLY FILED
NEVADA STATE OFFICE
at 10:00 AM on DEC 19 2014



A history of surveys is contained in the field notes.

This plat, in two sheets, represents the dependent resurvey of a portion of the east boundary and a portion of the subdivisional lines designed to restore the corners in their true original locations according to the best available evidence and a metes-and-bounds survey in section 13, Township 15 North, Range 64 East, Mount Diablo Meridian, Nevada.

Except as indicated hereon, the lottings and areas are as shown on the plat approved March 12, 1872 and the plat accepted September 29, 1971.

Survey executed by Joseph J. Johnson, Cadastral Surveyor, beginning July 21, 2013 and completed May 27, 2014, pursuant to Special Instructions dated July 18, 2013, for Group No. 927, Nevada.

UNITED STATES DEPARTMENT OF THE INTERIOR
BUREAU OF LAND MANAGEMENT

Reno, Nevada December 17, 2014

This plat is strictly conformable to the approved field notes, and the survey, having been correctly executed in accordance with the requirements of law and the regulations of this Bureau, is hereby accepted.

For the Director

Chief Cadastral Surveyor for Nevada

