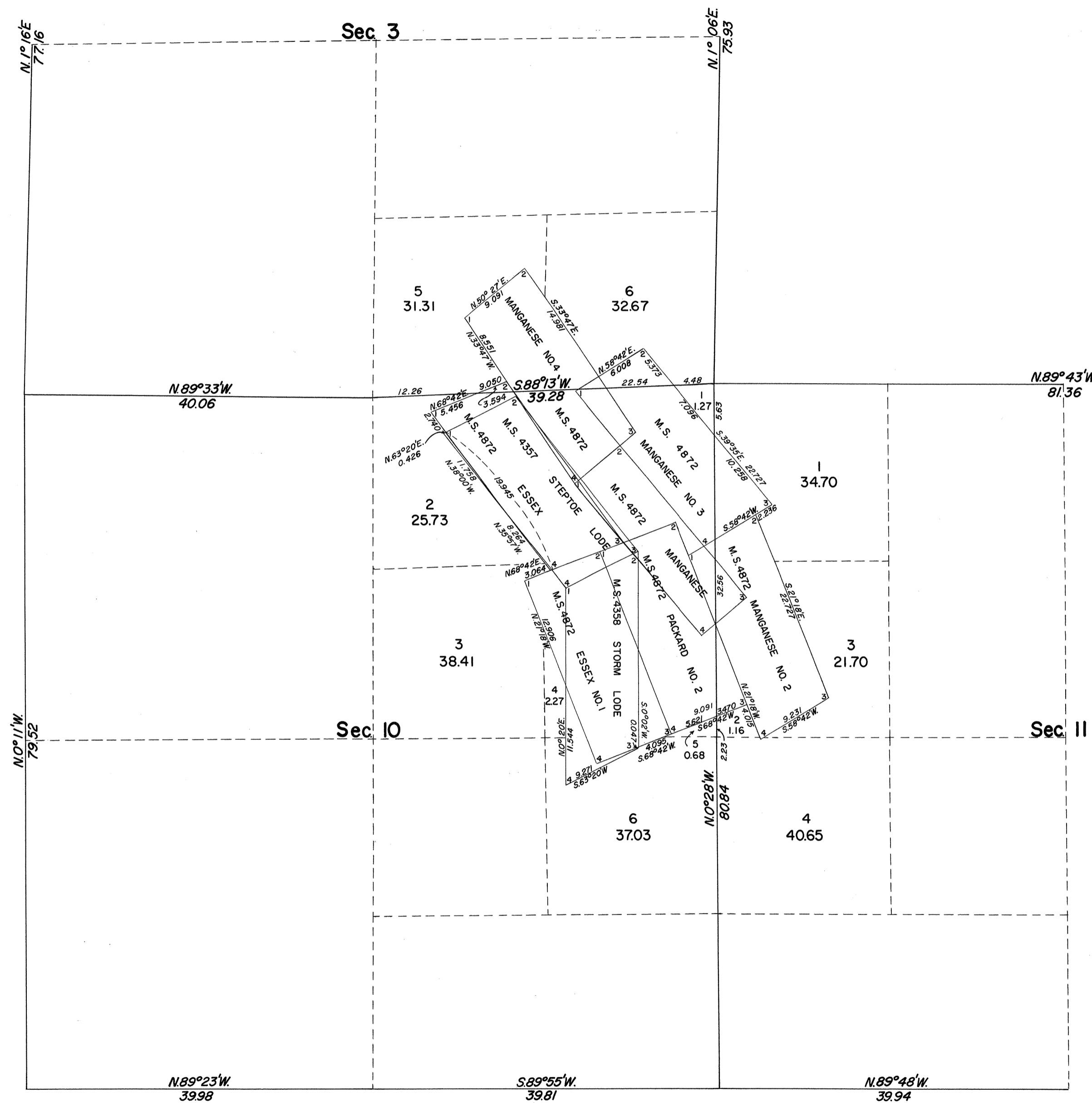


TOWNSHIP 15 NORTH, RANGE 64 EAST, OF THE MOUNT DIABLO MERIDIAN, NEVADA

OFFICIALLY FILED
NEVADA STATE OFFICE
10:00 AM 10/26/1971



Reference should be made to Sheet No. 1 for survey information.

UNITED STATES DEPARTMENT OF THE INTERIOR
BUREAU OF LAND MANAGEMENT
Washington, D.C. September 29, 1971

This plat is strictly conformable to the approved field notes, and the survey, having been correctly executed in accordance with the requirements of law and the regulations of this Bureau, is hereby accepted.

For the Director

Clark I. Lumm

Chief, Division of Cadastral Survey

