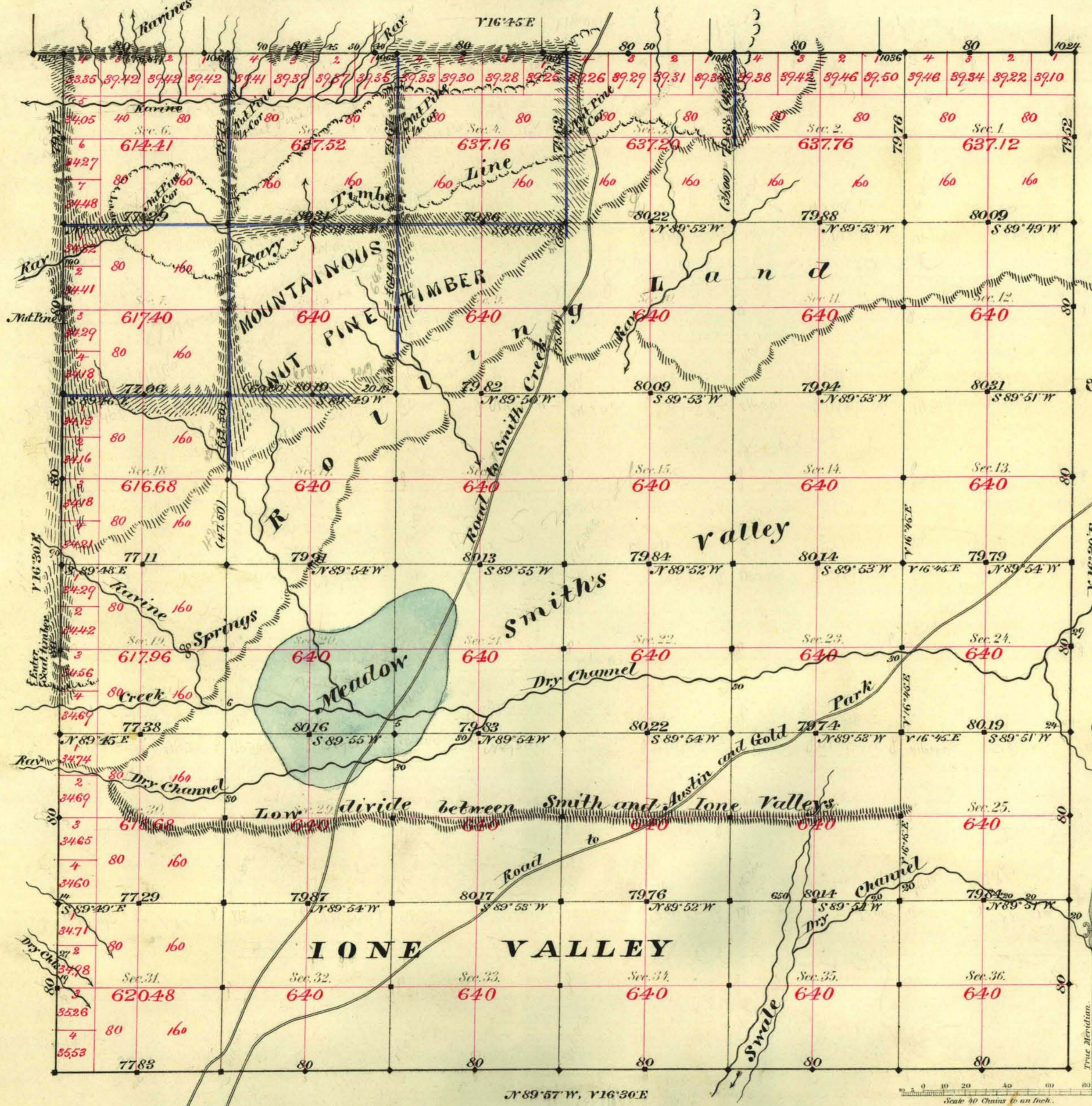


TOWNSHIP N^o 15 NORTH RANGE N^o 38 EAST MOUNT DIABLO MERIDIAN



Aggregate Area of Public Land Surveyed 22892.37 Ac.

Commenced April 19th 1883
Completed 26th

Subdivisions not noted run with a Variation of 16'30" East

Survey Designated	By Whom Surveyed	Date of Contract	Amount of Survey	When Surveyed	7 th Con
Township Lines	Stewart & Morrison	March 21 st 1883	23-77-06	1883	164
Subdiv ^{ns} black	"	"	49-26-31	April	"
Subdiv ^{ns} blue	"	"	10-38-70	"	"
Convergency	"	"	52-71	"	"

The above Map of Township N^o 15 North of Range N^o 38 East of Mt Diablo Meridian is strictly conformable to the field notes of the survey thereof on file in this Office, which have been examined and approved.

Surveyor General's Office }
Reno Nevada }
June 14th 1883 }
L. C. Downing }
Sur. Gen. Nevada }