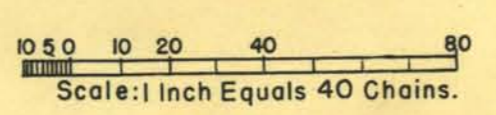
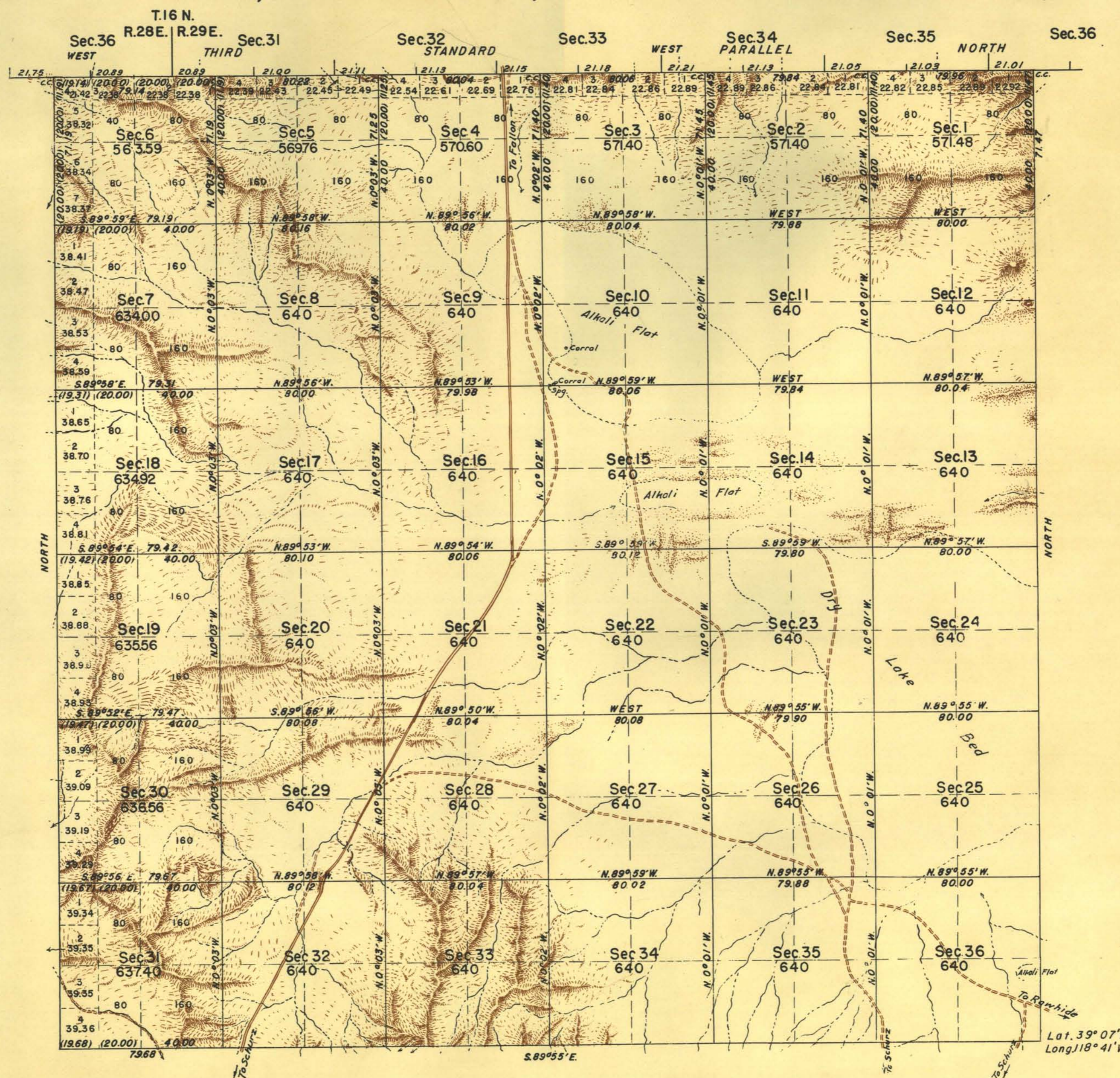


# TOWNSHIP N°15 NORTH, RANGE N°29 EAST, OF THE MOUNT DIABLO MERIDIAN, NEVADA.



Area Surveyed 22,596.67 Acres

LINES DESIGNATED	BY WHOM SURVEYED	N°	GROUP DATE	MILEAGE		WHEN SURVEYED	
				M.LS.	CHS.	BEGUN	COMPLETED
Exterior	C.S. Swanholm,	181	Feb 4 1937	11	62.66	May 14 1937	June 5 1937
Subdivisional	S.M. Ackerman, H.J. Rossolo, B.F. Guinn,	"	" " "	59	34.01	" " "	" " "
Miscellaneous	B. Boyd, C.P. Devine,	"	" " "	5	33.64	" " "	" " "

UNITED STATES DEPARTMENT OF THE INTERIOR  
BUREAU OF LAND MANAGEMENT

Denver, Colorado, November 1, 1946.  
This plat is strictly conformable to the field notes of the survey which have been examined and approved.

Washington, D. C., July 11, 1947  
The survey represented by this plat, having been correctly executed in accordance with the requirements of law and the regulations of this office, is hereby accepted.

*C.R. Hartung Jr.*  
Acting Chief Cadastral Engineer.

*Whoseham*  
Assistant Director

T.H.D. E.V.

T.15 N., R.29 E.