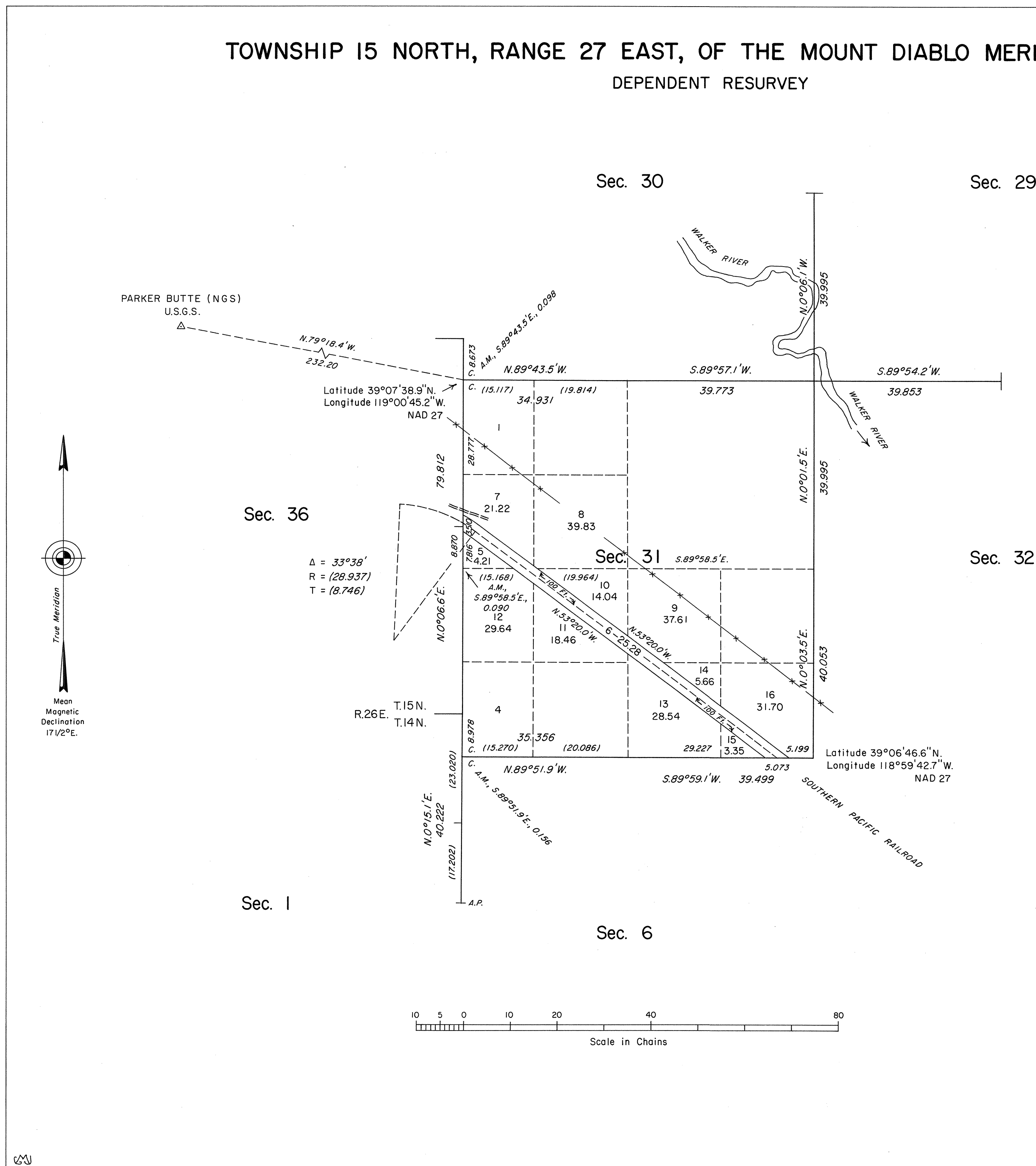


**ORIGINAL**

TOWNSHIP 15 NORTH, RANGE 27 EAST, OF THE MOUNT DIABLO MERIDIAN, NEVADA  
DEPENDENT RESURVEY



History of the earlier surveys is contained in the field notes.

A dependent resurvey of a portion of the east boundary of T. 14 N., R. 26 E., and a portion of the north boundary of T. 14 N., R. 27 E., was executed concurrently under this same Group.

This plat represents the dependent resurvey of a portion of the east boundary of T. 15 N., R. 26 E., and a portion of the subdivisonal lines of T. 15 N., R. 27 E., designed to restore the corners in their true original locations according to the best available evidence.

Lottings and areas, except as indicated hereon, are as shown on the plat approved October 27, 1905.

Survey executed by Robert A. Pratt, Cadastral Surveyor, beginning March 22, 1989 and completed March 23, 1989, under Special Instructions dated February 3, 1989 for Group No. 670, Nevada.

UNITED STATES DEPARTMENT OF THE INTERIOR  
BUREAU OF LAND MANAGEMENT  
Reno, Nevada September 27, 1989

This plat is strictly conformable to the approved field notes, and the survey, having been correctly executed in accordance with the requirements of law and the regulations of this Bureau, is hereby accepted.

For the Director  
*Lucel E. Bland*  
Chief Cadastral Surveyor

T.15N., R.27E., M.D.M.

JRM