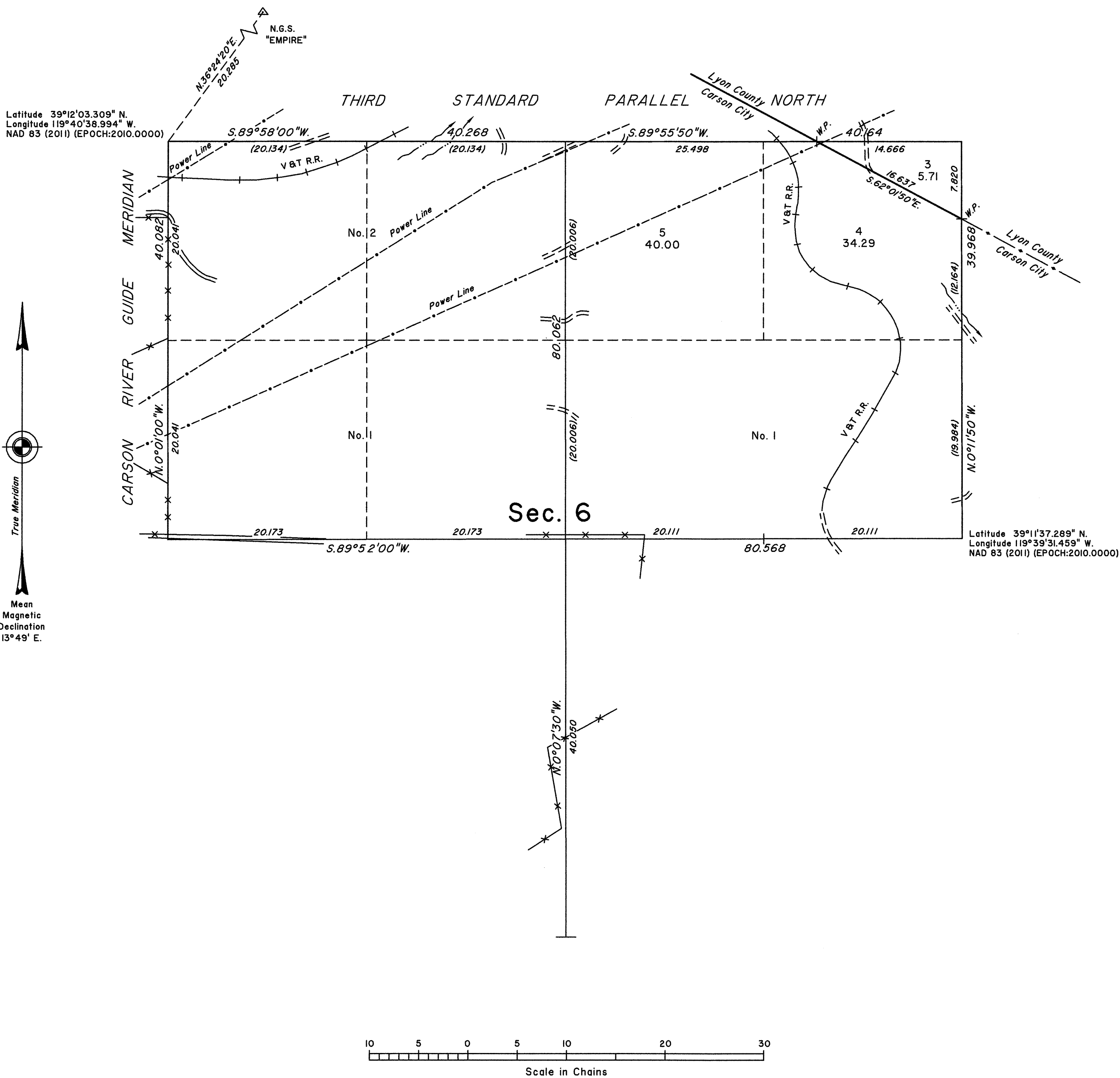


TOWNSHIP 15 NORTH, RANGE 21 EAST, OF THE MOUNT DIABLO MERIDIAN, NEVADA

DEPENDENT RESURVEY, SUBDIVISION AND METES-AND-BOUNDS SURVEY



A history of surveys is contained in the field notes.

A dependent resurvey of the Third Standard Parallel North through a portion of Range 21 East was executed concurrently under Township 16 North, Range 21 East and a dependent resurvey of a portion of the west boundary (Carson River Guide Meridian) was executed concurrently under Township 15 North, Range 20 East, both of this same Group.

This plat represents the dependent resurvey of a portion the subdivisional lines designed to restore the corners in their true original locations according to the best available evidence, the subdivision of section 6 and a metes-and-bounds survey of a portion of the Carson City and Lyon County Line, Township 15 North, Range 21 East, Mount Diablo Meridian, Nevada.

Except as indicated hereon, the lottings and areas are as shown on the plat approved May 4, 1866.

Survey executed by Clarence D. Strickland, Cadastral Surveyor, beginning December 3, 2012, and completed March 18, 2014, pursuant to Special Instructions dated November 20, 2012, for Group No. 920, Nevada.

UNITED STATES DEPARTMENT OF THE INTERIOR  
BUREAU OF LAND MANAGEMENT

Reno, Nevada June 25, 2014

This plat is strictly conformable to the approved field notes, and the survey, having been correctly executed in accordance with the requirements of law and the regulations of this Bureau, is hereby accepted.

For the Director

*David D. Miller*

Chief Cadastral Surveyor for Nevada