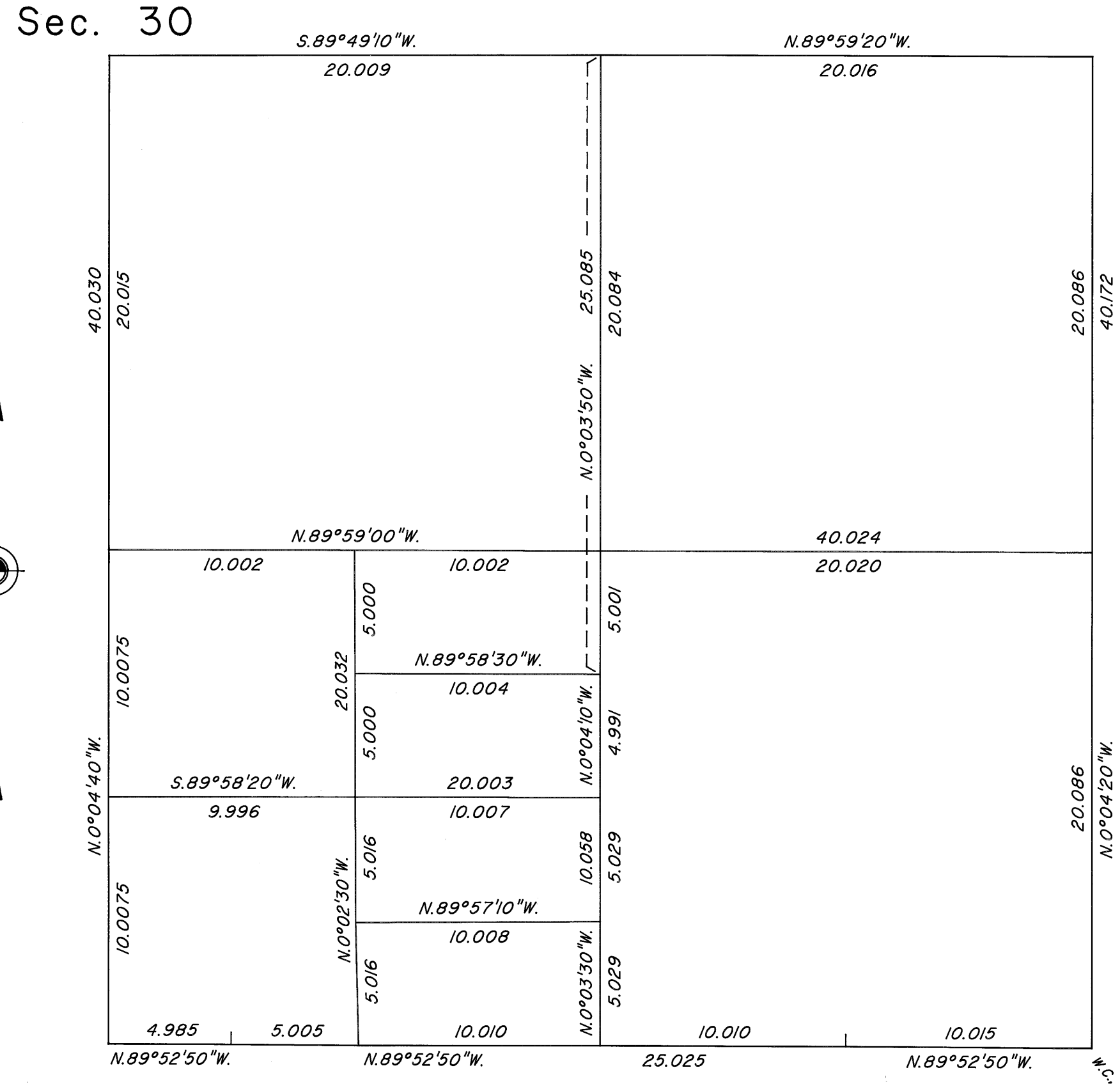


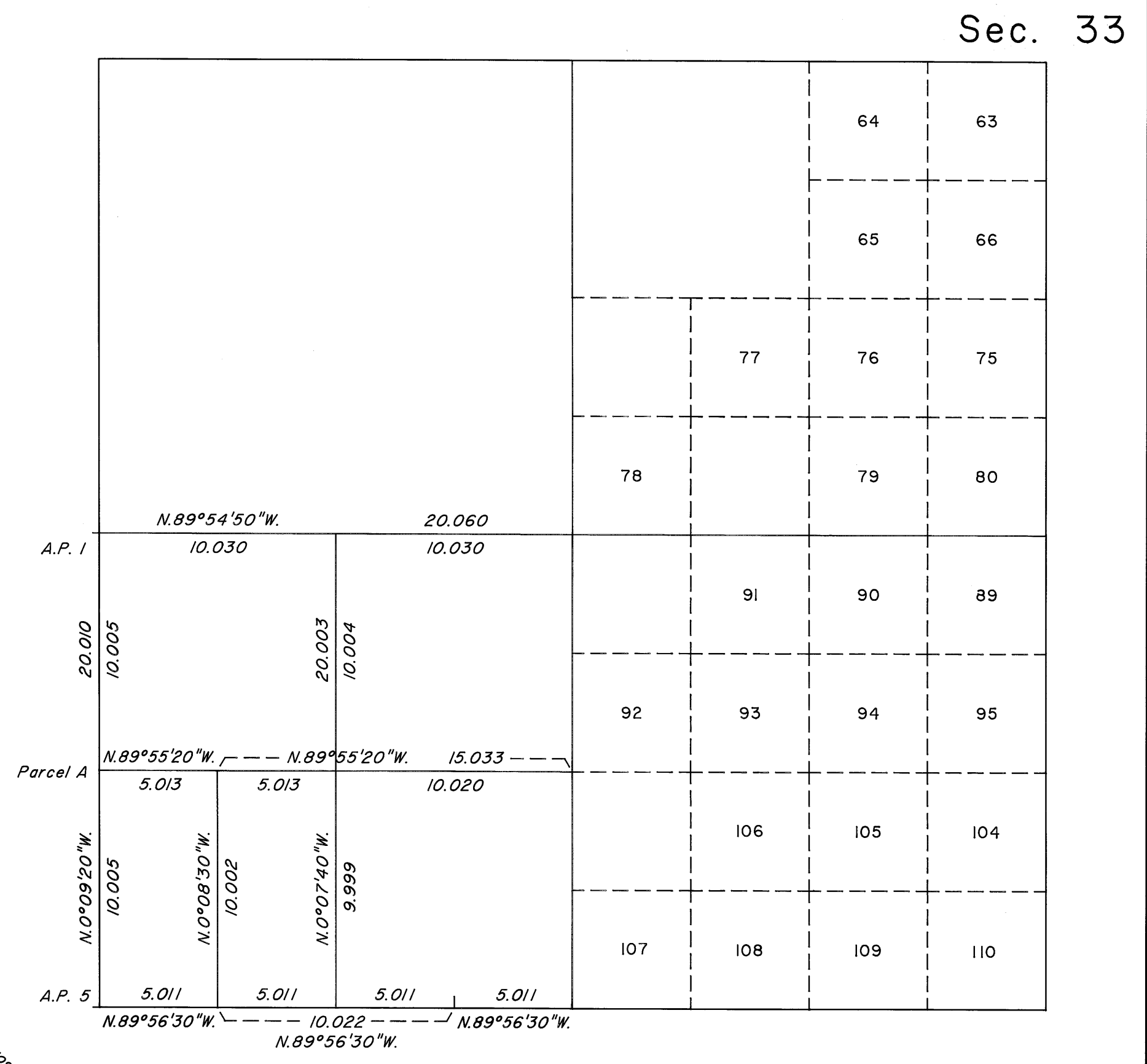
TOWNSHIP 15 NORTH, RANGE 20 EAST, OF THE MOUNT DIABLO MERIDIAN, NEVADA
ENLARGED DIAGRAMS

OFFICIALLY FILED
NEVADA STATE OFFICE
at 10:00 AM on September 1, 2010

DETAIL "A"



DETAIL "B"



Reference should be made to Sheet No. 1 for survey information.

UNITED STATES DEPARTMENT OF THE INTERIOR
BUREAU OF LAND MANAGEMENT

Reno, Nevada August 31, 2010

This plat is strictly conformable to the approved field notes, and the survey, having been correctly executed in accordance with the requirements of law and the regulations of this Bureau, is hereby accepted.

For the Director

Chief Cadastral Surveyor, Nevada

