

# TOWNSHIP 15 NORTH, RANGE 20 EAST, OF THE MOUNT DIABLO MERIDIAN, NEVADA

## DEPENDENT RESURVEY AND SUBDIVISION

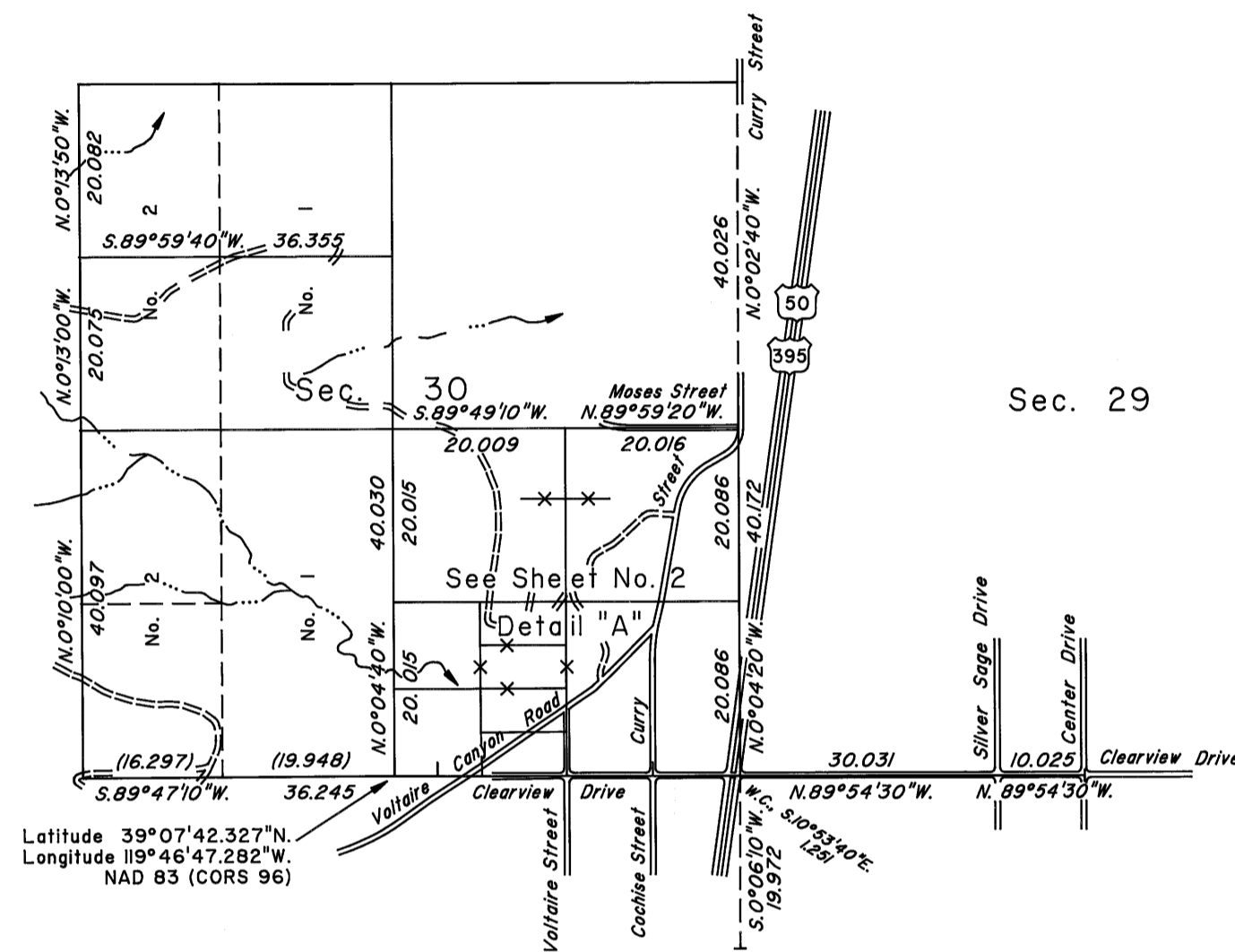
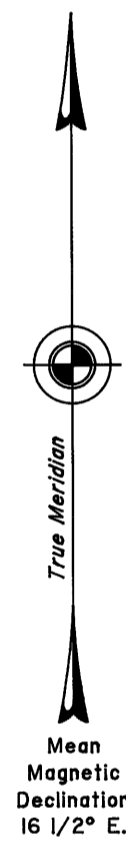
OFFICIALLY FILED  
NEVADA STATE OFFICE  
at 10:00 AM on September 1, 2010

Sec. 19

Sec. 29

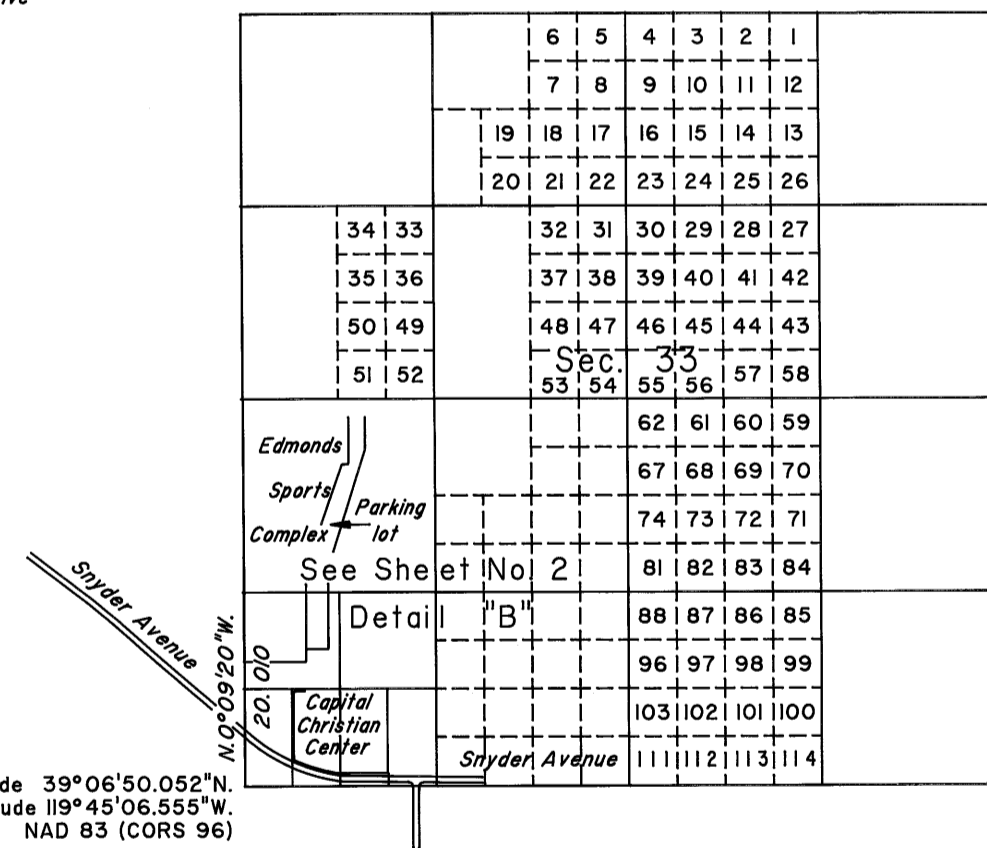
Sec. 31

Sec. 32



Latitude 39°07'42.327"N.  
Longitude 119°46'47.282"W.  
NAD 83 (CORS 96)

Latitude 39°06'50.052"N.  
Longitude 119°45'06.555"W.  
NAD 83 (CORS 96)



A history of surveys is contained in the field notes.

This plat, in two sheets, represents the dependent resurvey of portions of the south and west boundaries, a portion of the subdivisional lines and a portion of the subdivision-of-section lines of sections 30 and 33 designed to restore the corners in their true original locations according to the best available evidence, and the further subdivision of sections 30 and 33, Township 15 North, Range 20 East, Mount Diablo Meridian, Nevada.

Lottings and areas are as shown on the plat approved June 28, 1862 and the plats accepted April 29, 1966, and December 11, 2007.

For those surveyed lines not showing bearings and distances, refer to the official records of 1862, 1966 and 2007.

Survey executed by Thomas E. Casinger and Steven E. Dagitz, Cadastral Surveyors, beginning May 15, 2009, and completed June 8, 2010, pursuant to Special Instructions dated May 14, 2009, for Group No. 874, Nevada.

UNITED STATES DEPARTMENT OF THE INTERIOR  
BUREAU OF LAND MANAGEMENT

Reno, Nevada August 31, 2010

This plat is strictly conformable to the approved field notes, and the survey, having been correctly executed in accordance with the requirements of law and the regulations of this Bureau, is hereby accepted.

For the Director

Chief Cadastral Surveyor, Nevada

