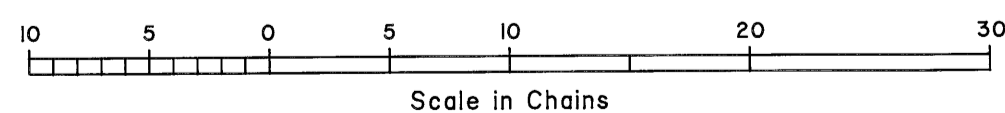
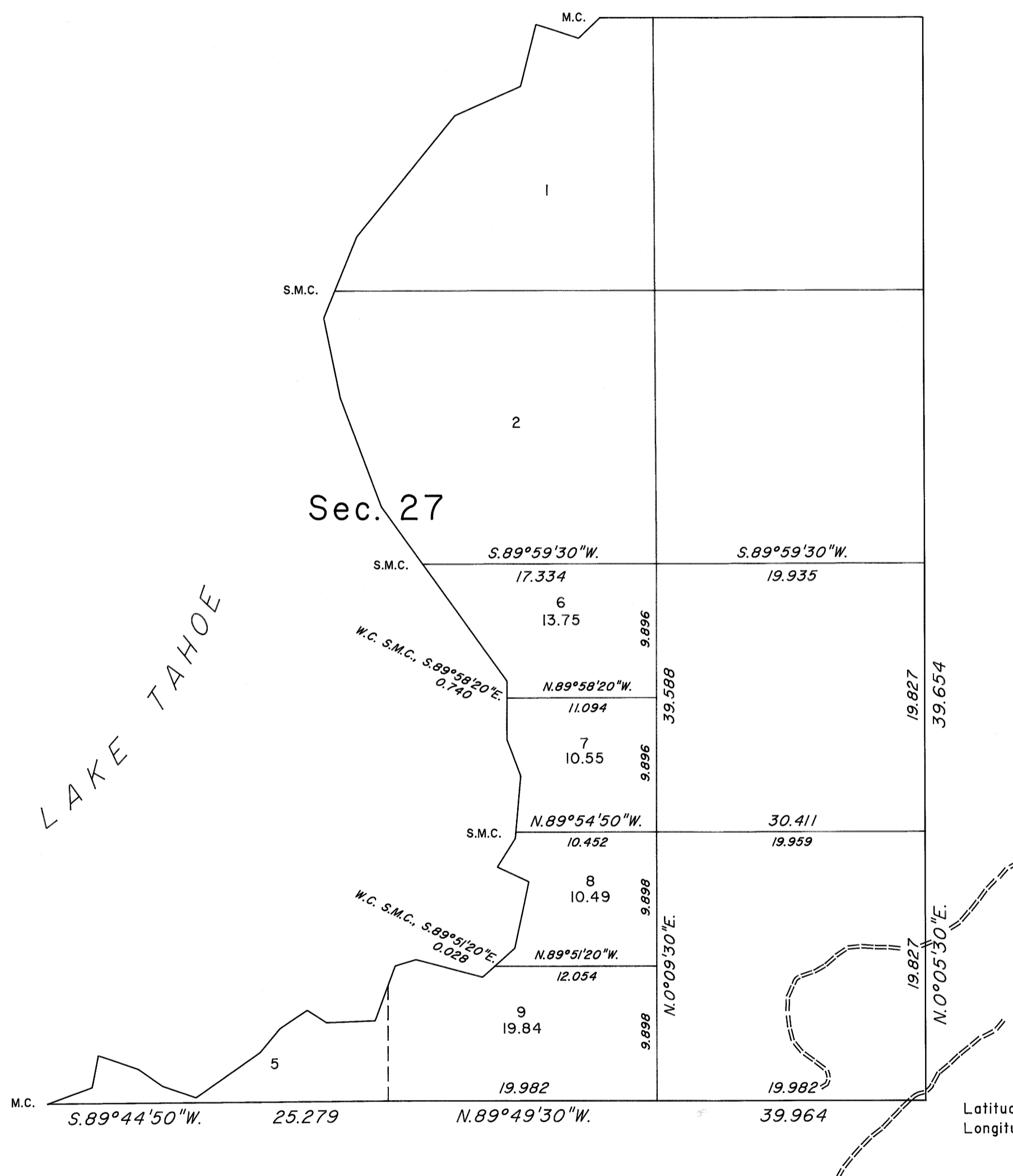
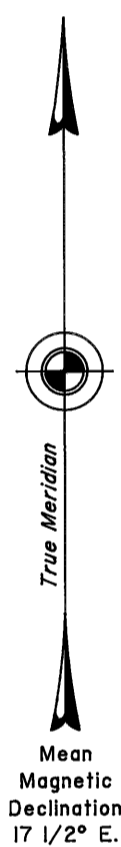


TOWNSHIP 15 NORTH, RANGE 18 EAST, OF THE MOUNT DIABLO MERIDIAN, NEVADA
DEPENDENT RESURVEY AND SUBDIVISION



A history of surveys is contained in the field notes.

This plat represents the dependent resurvey of a portion of the subdivisional lines, a portion of the subdivision-of-section lines of section 27 and a portion of the meanders of Lake Tahoe designed to restore the corners in their original locations according to the best available evidence, and the further subdivision of section 27, Township 15 North, Range 18 East, Mount Diablo Meridian, Nevada.

Except as indicated hereon, the lottings and areas are as shown on the plat approved February 28, 1866, and the plat accepted November 29, 1995.

For those surveyed lines not showing bearings and distances, refer to the official record of 1995, and the field notes of the dependent resurvey of the meanders of Lake Tahoe of this survey.

Survey executed by Lance A. Barney, Cadastral Surveyor, beginning August 16, 2009, and completed November 11, 2010, pursuant to Special Instructions dated August 12, 2009, for Group No. 883, Nevada.

UNITED STATES DEPARTMENT OF THE INTERIOR
BUREAU OF LAND MANAGEMENT

Reno, Nevada February 11, 2011

This plat is strictly conformable to the approved field notes, and the survey, having been correctly executed in accordance with the requirements of law and the regulations of this Bureau, is hereby accepted.

For the Director

Chief Cadastral Surveyor, Nevada