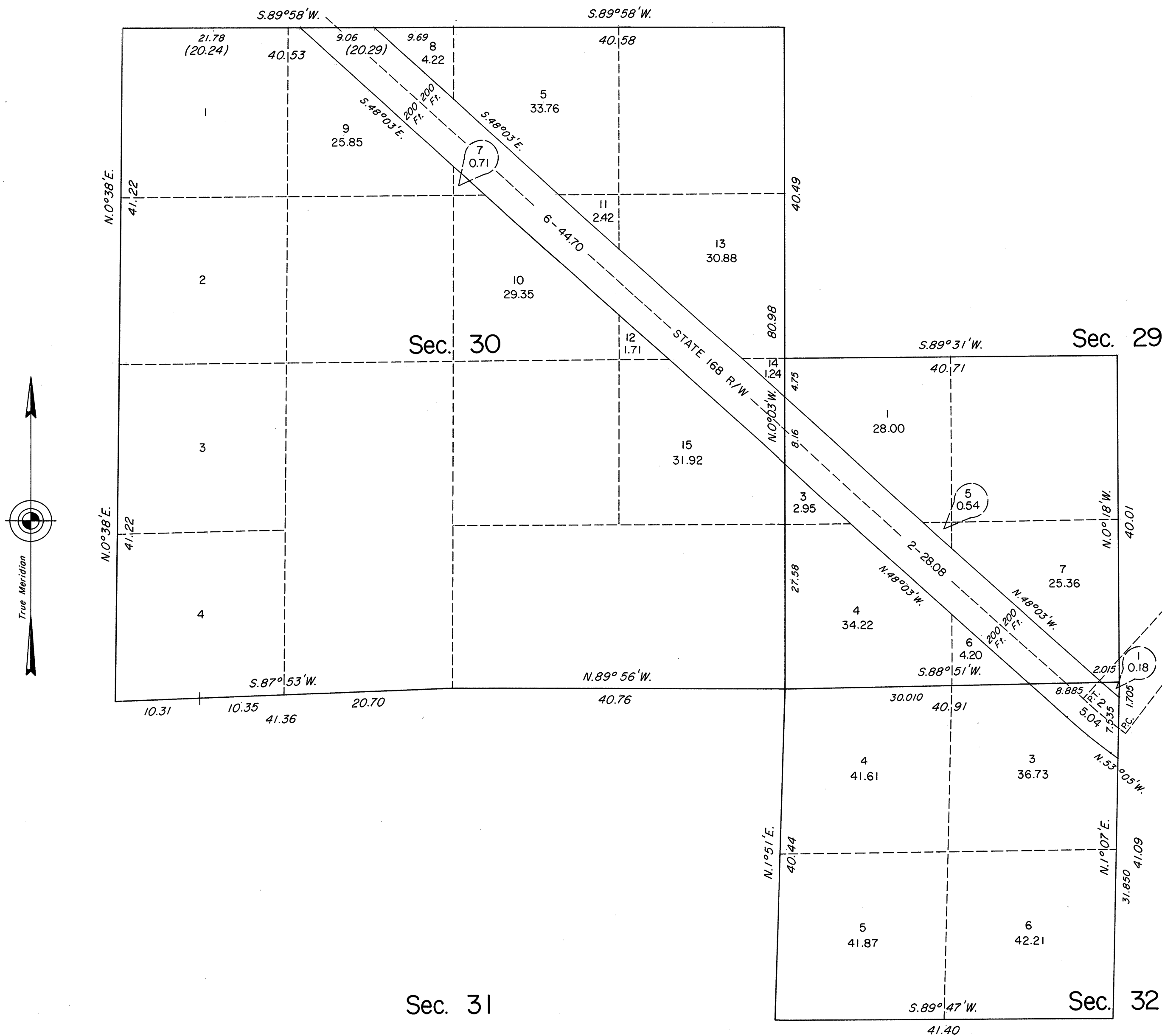


ORIGINAL

Sheet No. 2 of 2 Sheets

TOWNSHIP 14 SOUTH, RANGE 66 EAST, OF THE MOUNT DIABLO MERIDIAN, NEVADA

ENLARGED DIAGRAM OF SW1/4 SEC. 29, SEC. 30 AND NW1/4 SEC. 32



Reference should be made to Sheet No. 1 for survey information.

$\Delta = 5^{\circ}02'$
 $R = 75.758$
 $L = 6.655$

UNITED STATES DEPARTMENT OF THE INTERIOR
BUREAU OF LAND MANAGEMENT

Reno, Nevada

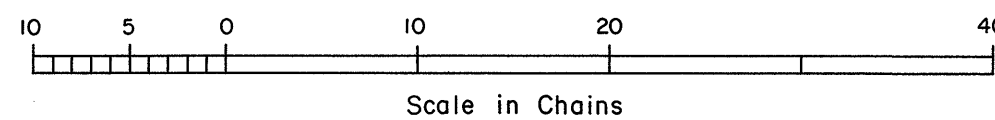
December 14, 1989

This plat is strictly conformable to the approved field notes, and the survey, having been correctly executed in accordance with the requirements of law and the regulations of this Bureau, is hereby accepted.

For the Director

John S. Parrish

Chief Cadastral Surveyor



T.14S., R.66E., M.D.M.