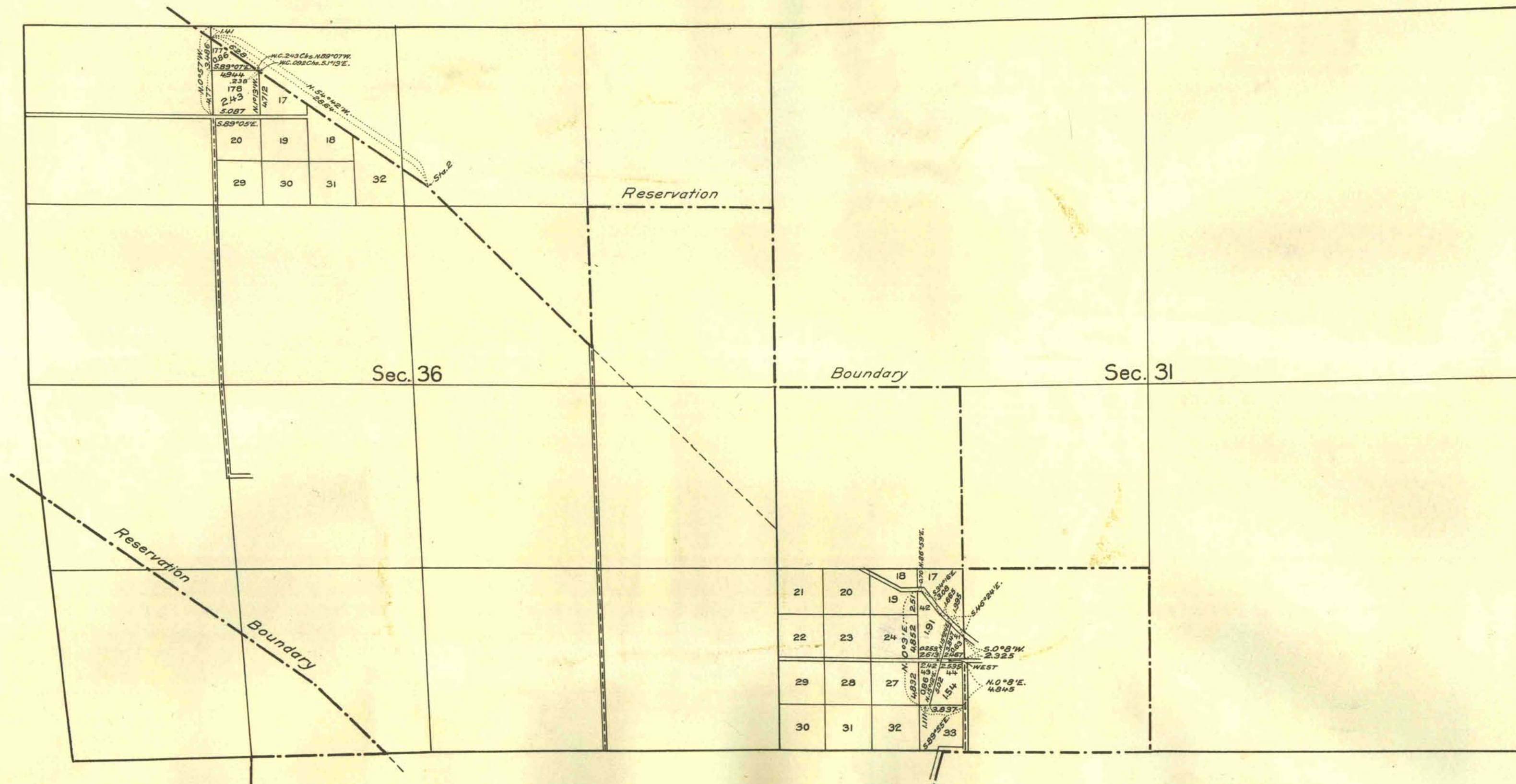


PLAT
OF THE RESURVEY OF
Original Lot No. 16 Sec. 36, T. 14 S. R. 65 E.
and Lots Nos. 25 and 26, Sec. 31 T. 14 S. R. 66 E.
MOUNT DIABLO MERIDIAN
NEVADA



I hereby certify that this amended plat of the resurvey of original lot 16 section 36, T. 14 S. R. 65 E. and lots 25 and 26 section 31, T. 14 S. R. 66 E. of the Mount Diablo Meridian within the Moapa Indian Reservation, Nevada, executed by H. L. Baldwin, September 30, 1914, under my supervision and direction, under instructions from the Commissioner of the General Land Office, dated August 10, 1914, is strictly conformable to the field notes of the survey thereof.
Washington, D.C. May 7, 1915

A. F. Dunnington
Topographer
General Land Office

Scale One Inch = 10 Chains

DEPARTMENT OF THE INTERIOR
GENERAL LAND OFFICE
This plat of resurveys in the Moapa Indian Reservation, Nevada, as surveyed under the supervision and direction of A. F. Dunnington, Topographer, is strictly conformable to the field notes of the survey thereof on file in this office which have been examined and approved.
Washington, D.C. Nov. 13, 1915.

Clayton
Commissioner