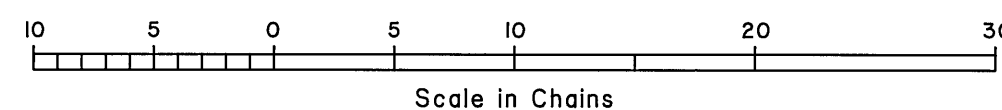
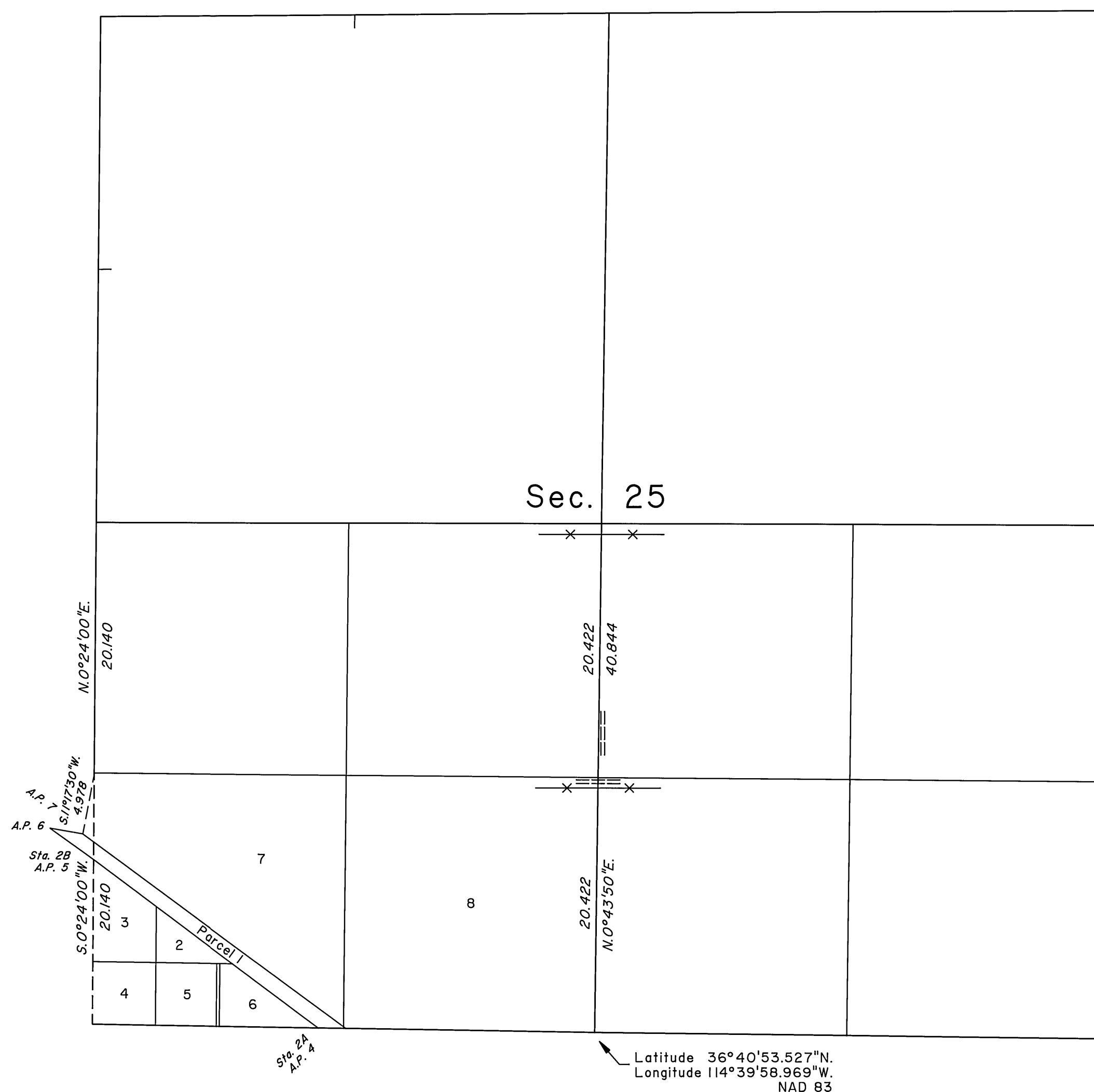
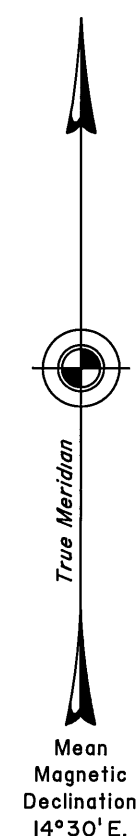


TOWNSHIP 14 SOUTH, RANGE 65 EAST, OF THE MOUNT DIABLO MERIDIAN, NEVADA
DEPENDENT RESURVEY



A history of surveys is contained in the field notes.

This plat represents the dependent resurvey of a portion of the subdivisional lines and a portion of the subdivision-of-section lines of section 25, Township 14 South, Range 65 East, Mount Diablo Meridian, Nevada, designed to restore the corners in their true original locations according to the best available evidence.

Except as indicated hereon, the lottings and areas are as shown on the plats approved December 24, 1881 and May 16, 1913, and plats accepted April 24, 1981 and April 10, 1992.

For those survey lines not showing bearings and distances, refer to the official records of 1981 and 1992.

Survey executed by Don R. Aschenbach, Cadastral Surveyor, beginning September 19, 2005, and completed April 6, 2007, pursuant to Special Instructions dated August 23, 2005, for Group No. 829, Nevada.

UNITED STATES DEPARTMENT OF THE INTERIOR
BUREAU OF LAND MANAGEMENT

Reno, Nevada May 10, 2007

This plat is strictly conformable to the approved field notes, and the survey, having been correctly executed in accordance with the requirements of law and the regulations of this Bureau, is hereby accepted.

For the Director

Chief Cadastral Surveyor, Nevada

T.14S., R.65E., M.D.M.