

OFFICIALLY FILED
NEVADA STATE OFFICE
10:00 A.M., December 28, 1979

TOWNSHIP 14 SOUTH, RANGE 48 EAST, OF THE MOUNT DIABLO MERIDIAN, NEVADA

A history of earlier surveys is contained in the field notes.

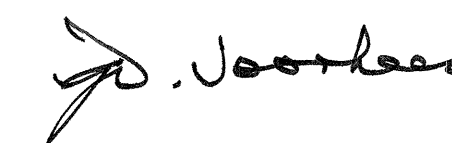
This plat represents the survey of a portion of the subdivisional lines of T. 14 S., R. 48 E., Mount Diablo Meridian, Nevada.

Survey executed by Joseph A. Bastian, Cadastral Surveyor, March 27, 1979, under Special Instructions dated March 16, 1979, for Group No. 571, Nevada.

UNITED STATES DEPARTMENT OF THE INTERIOR
BUREAU OF LAND MANAGEMENT
Denver, Colorado August 2, 1979

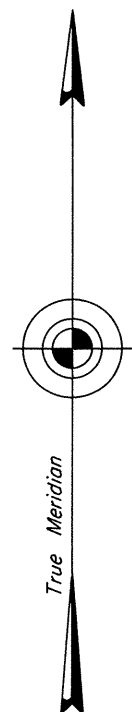
This plat is strictly conformable to the approved field notes, and the survey, having been correctly executed in accordance with the requirements of law and the regulations of this Bureau, is hereby accepted.

For the Director



Chief, Cadastral Survey
Examination and Approval Staff

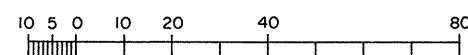
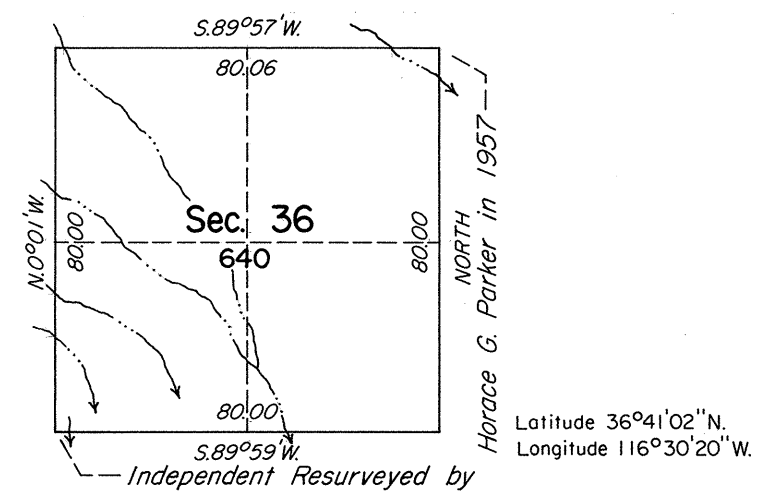
Unsurveyed



Mean Magnetic Declination
16°E.

Sec. 25

Sec. 35



Scale in Chains
Area surveyed: 640 acres