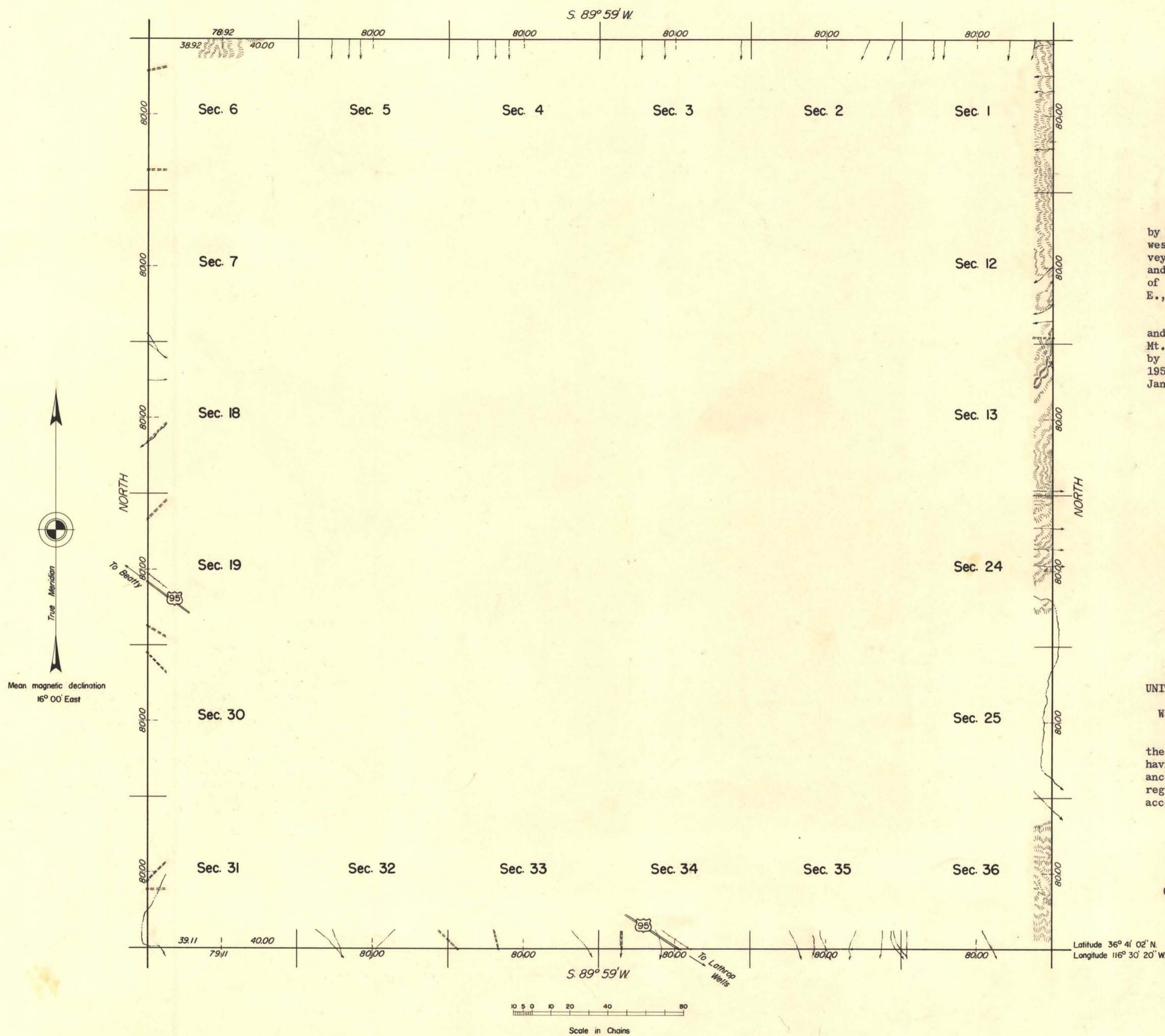


TOWNSHIP 14 SOUTH, RANGE 48 EAST, OF THE MOUNT DIABLO MERIDIAN, NEVADA

INDEPENDENT RESURVEY



The township boundaries were surveyed by M. D. Heist in 1906. The south and west boundaries were independently resurveyed concurrently under this same group and the record appears in the field notes of T. 15 S., R. 48 E. and T. 14 S., R. 47 E., respectively.

The independent resurvey of the north and east boundaries of T. 14 S., R. 48 E., Mt. Diablo Meridian, Nevada was executed by Horace G. Parker, February 27 to March 1, 1957, under special instructions dated January 18, 1957, for Group 368, Nevada.

UNITED STATES DEPARTMENT OF THE INTERIOR
BUREAU OF LAND MANAGEMENT
Washington, D. C. May 16, 1958

This plat is strictly conformable to the approved field notes, and the survey, having been correctly executed in accordance with the requirements of law and the regulations of this Bureau, is hereby accepted.

For the Director
Earl G. Harrington
Cadastral Engineering Staff Officer

Latitude $36^{\circ} 41' 02'' N.$
Longitude $116^{\circ} 30' 20'' W.$