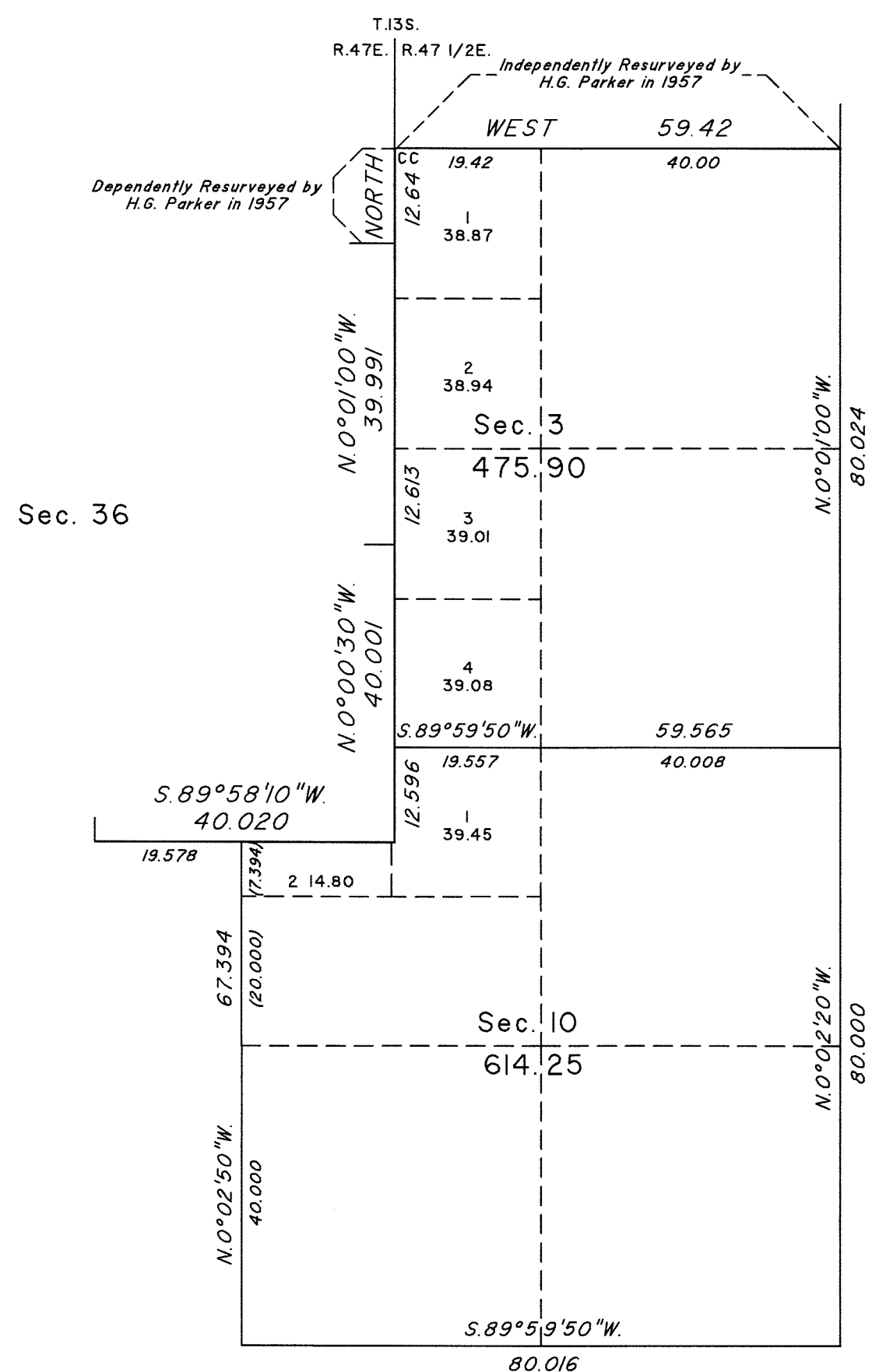
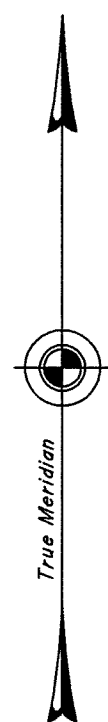


TOWNSHIP 14 SOUTH, RANGE 47 EAST, OF THE MOUNT DIABLO MERIDIAN, NEVADA
ENLARGED DIAGRAM OF SECTIONS 3 AND 10

OFFICIALLY FILED
NEVADA STATE OFFICE
at 10:00 AM on
JAN 23 2024



Reference should be made to Sheet No. 1 for survey information.



UNITED STATES DEPARTMENT OF THE INTERIOR
BUREAU OF LAND MANAGEMENT

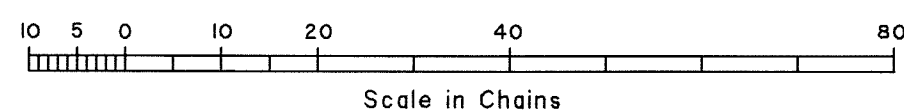
Reno, Nevada January 4, 2024

This plat is strictly conformable to the approved field notes, and the survey, having been correctly executed in accordance with the requirements of law and the regulations of this Bureau, is hereby accepted.

For the Director

Michael O. Hammerly

Chief Cadastral Surveyor for Nevada



RPM

T.14S., R.47E., M.D.M.