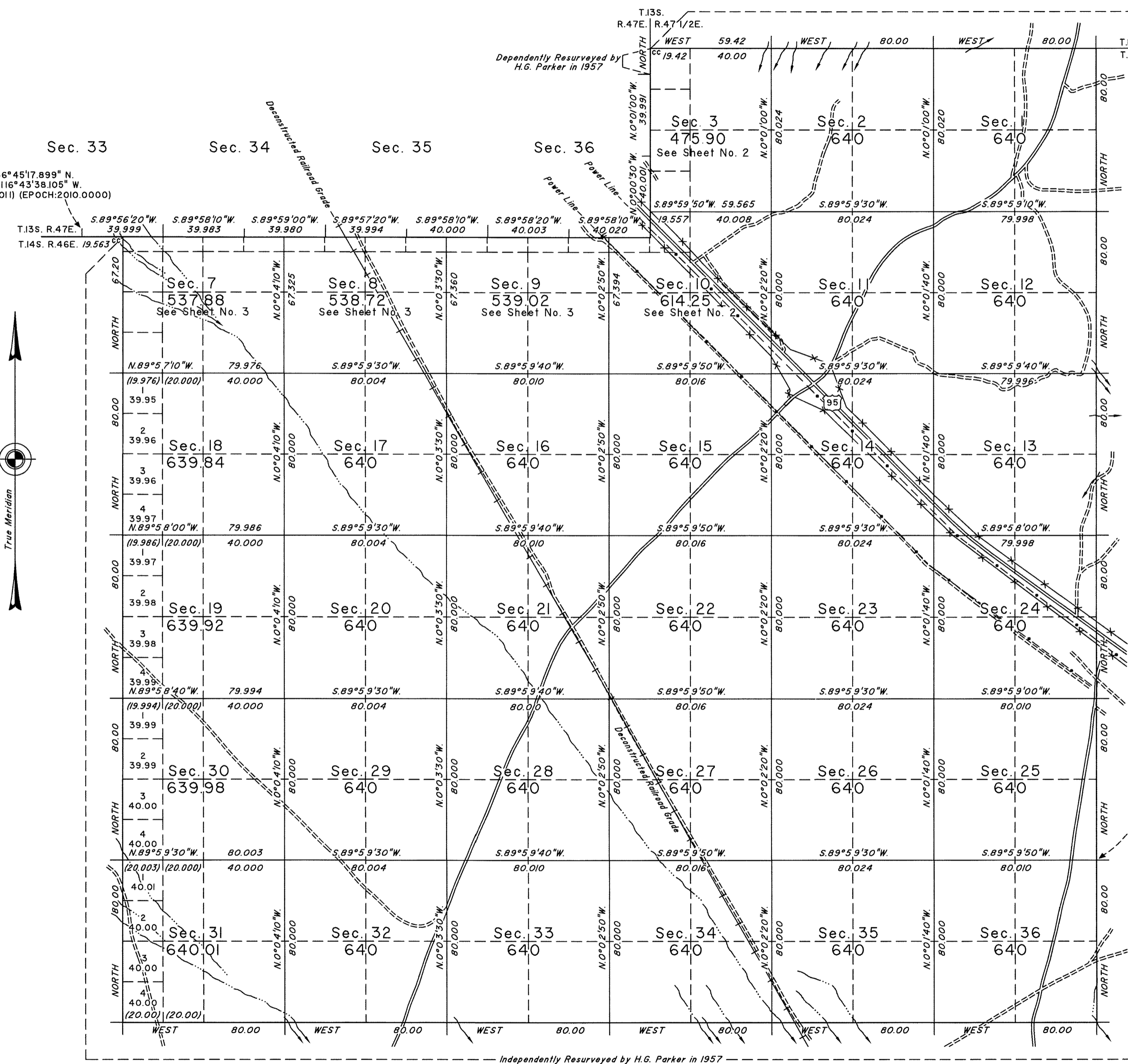


# TOWNSHIP 14 SOUTH, RANGE 47 EAST, OF THE MOUNT DIABLO MERIDIAN, NEVADA

## DEPENDENT RESURVEY AND SURVEY

OFFICIALLY FILED  
NEVADA STATE OFFICE  
at 10:00 AM on  
JAN 23 2024

Latitude 36°45'17.899" N  
Longitude 116°43'38.105" W  
NAD83 (2011) (EPOCH:2010.0000)



A history of surveys is contained in the field notes.

This plat represents the dependent resurvey of portions of the south and east boundaries, Township 13 South, Range 47 East, and the survey of the subdivision lines, Township 14 South, Range 47 East, Mount Diablo Meridian, Nevada.

Survey executed by Lee T. Wilson, Cadastral Surveyor, beginning January 19, 2022 and completed December 4, 2023, pursuant to Special Instructions dated January 4, 2022, for Group No. 999, Nevada.

Latitude 36°41'57.434" N  
Longitude 116°36'52.915" W  
NAD83 (2011) (EPOCH:2010.0000)

UNITED STATES DEPARTMENT OF THE INTERIOR  
BUREAU OF LAND MANAGEMENT

Reno, Nevada January 4, 2024

This plat is strictly conformable to the approved field notes, and the survey, having been correctly executed in accordance with the requirements of law and the regulations of this Bureau, is hereby accepted.

For the Director

Chief Cadastral Surveyor for Nevada

