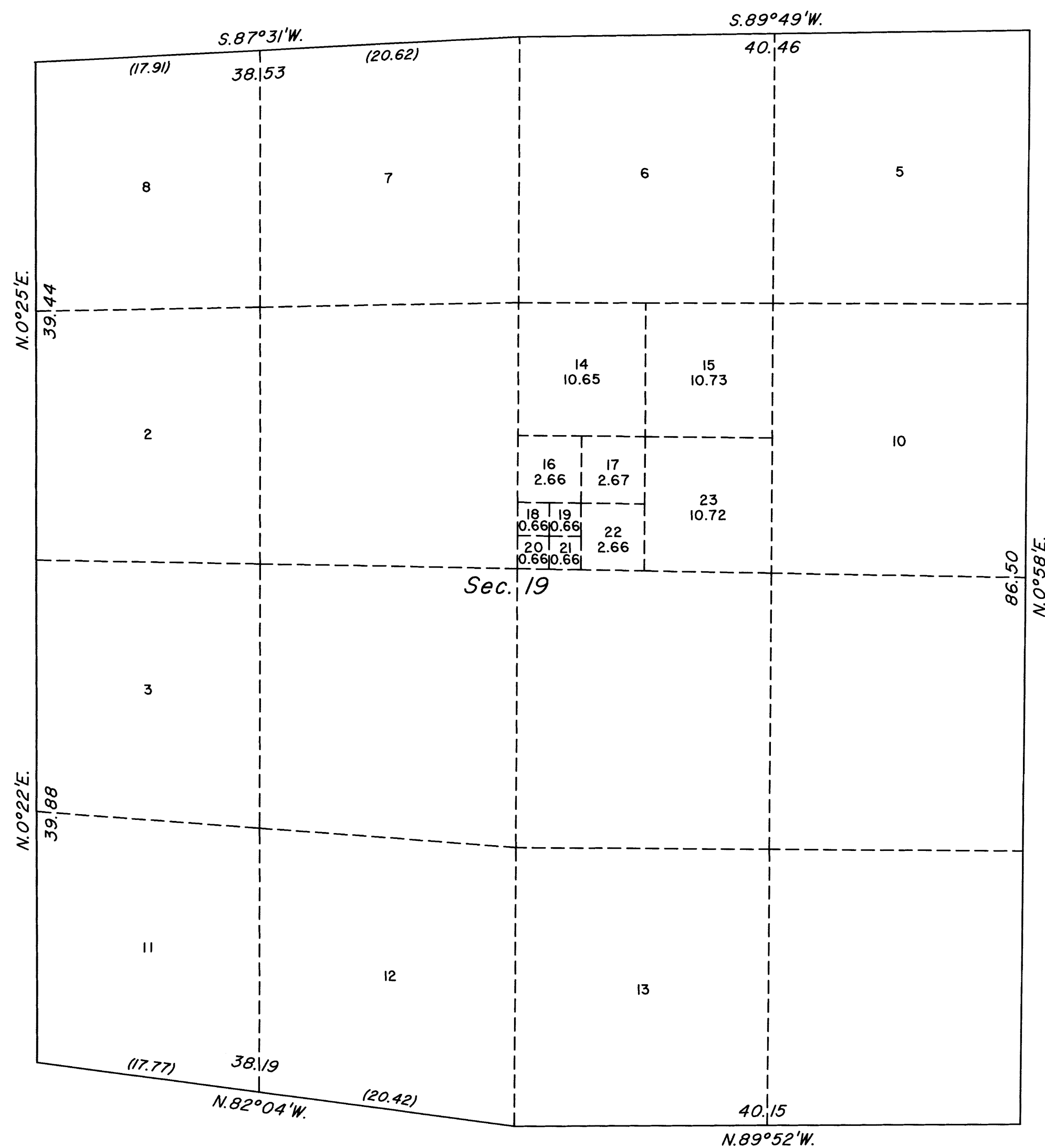
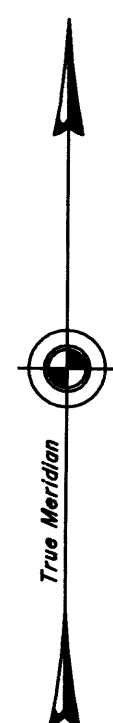


ORIGINAL

OFFICIALLY FILED
NEVADA STATE OFFICE
at 10:00 AM on JAN 26 2018

TOWNSHIP 14 NORTH, RANGE 70 EAST, OF THE MOUNT DIABLO MERIDIAN, NEVADA
SUPPLEMENTAL PLAT OF SECTION 19



This plat showing a subdivision of lot 9, section 19, Township 14 North, Range 70 East, Mount Diablo Meridian, Nevada, is based upon the plat approved February 17, 1879 and the plat accepted October 1, 1976.

Plat prepared by Brandon K. Grace, Cadastral Surveyor, beginning December 20, 2017 and completed December 20, 2017, pursuant to Special Instructions dated December 20, 2017 and Assignment Instructions dated December 20, 2017, for Group No. 976, Nevada.

Except as indicated hereon, the lotting and areas are shown on the plat approved February 17, 1879 and the plat accepted October 1, 1976.

UNITED STATES DEPARTMENT OF THE INTERIOR
BUREAU OF LAND MANAGEMENT

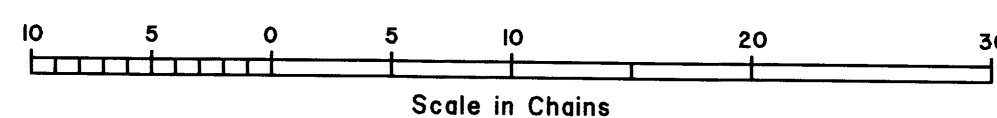
Reno, Nevada January 24, 2018

This plat, showing amended lottings, is based upon the official records, and having been correctly prepared in accordance with the requirements of the law and the regulations of this Bureau, is hereby accepted.

For the Director

Michael O. Hammering

Chief Cadastral Surveyor for Nevada



BKG

T.14N., R.70E., M.D.M.