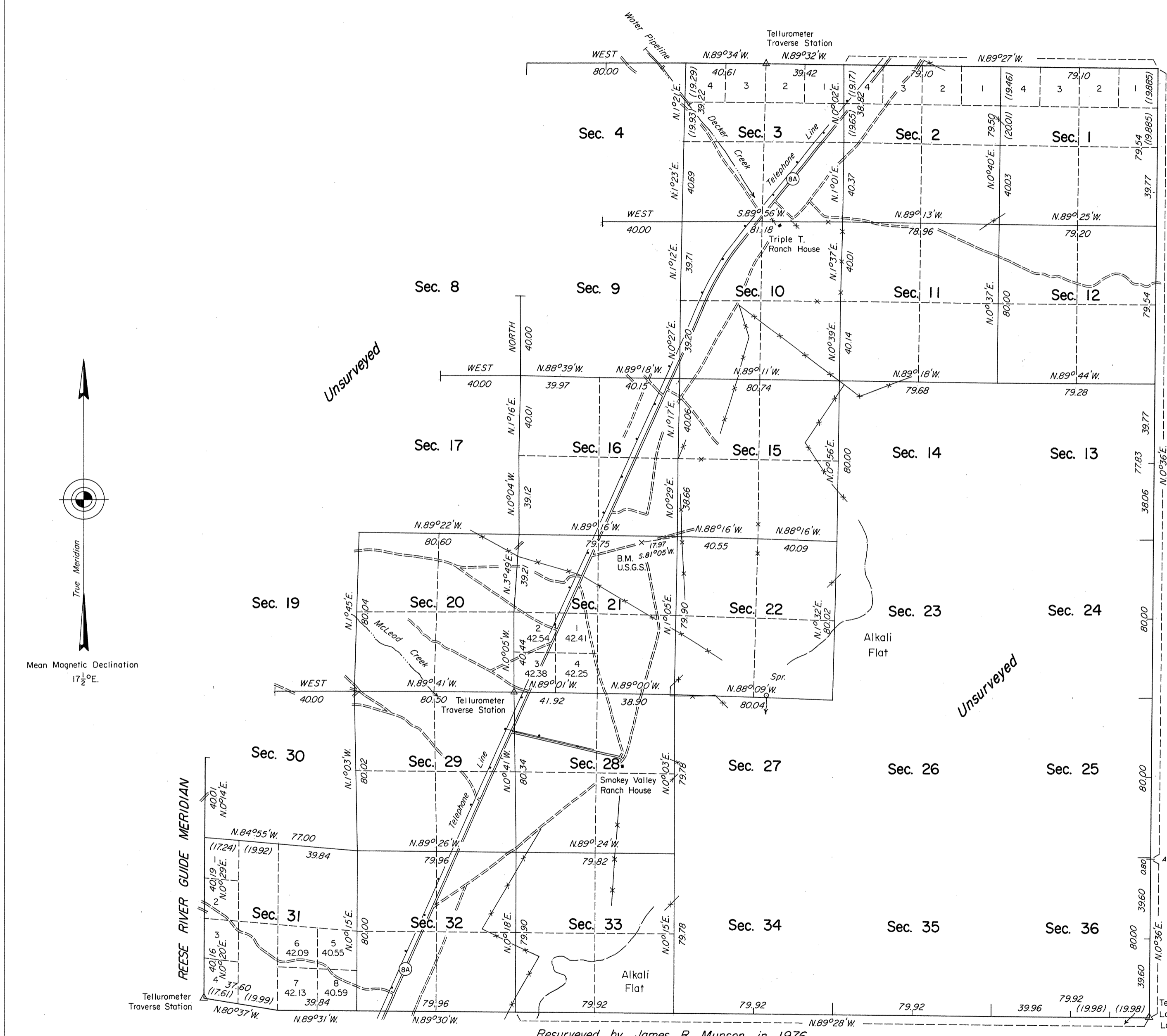


TOWNSHIP 14 NORTH, RANGE 43 EAST, OF THE MOUNT DIABLO MERIDIAN, NEVADA

DEPENDENT RESURVEY

OFFICIALLY FILED
NEVADA STATE OFFICE
10:00 a.m. July 9, 1980

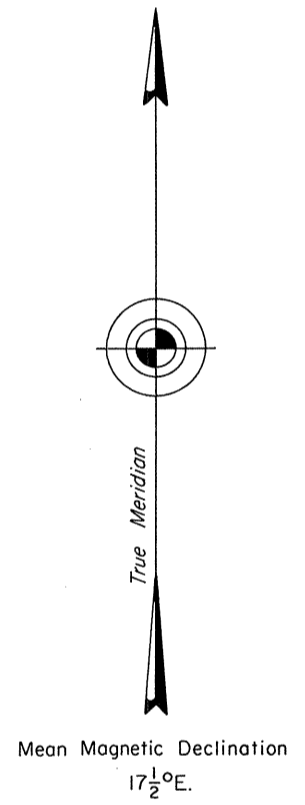


A history of surveys is contained in the field notes.

This plat represents the dependent resurvey of the east boundary, a portion of the north and west boundaries and a portion of the subdivisional lines, designed to restore the corners in their true original locations according to the best available evidence, T. 14 N., R. 43 E., Mount Diablo Meridian, Nevada.

Except as indicated hereon, the lottings and areas are as shown on the plat approved December 27, 1873.

Survey executed by Robert A. Pratt, Cadastral Surveyor, beginning August 8, 1978, and completed September 18, 1978, pursuant to Special Instructions dated July 19, 1978, for Group No. 565, Nevada.



UNITED STATES DEPARTMENT OF THE INTERIOR
BUREAU OF LAND MANAGEMENT
Denver, Colorado June 19, 1980

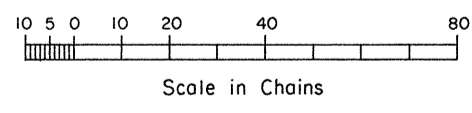
This plat is strictly conformable to the approved field notes, and the survey, having been correctly executed in accordance with the requirements of law and the regulations of this Bureau, is hereby accepted.

For the Director

Gary S. Speight

Acting Chief, Cadastral Survey
Examination and Approval Staff

Resurveyed by James R. Munson in 1976



Tellurometer Traverse Station
Latitude 39°01'24.28" N.
Longitude 117°05'13.12" W.