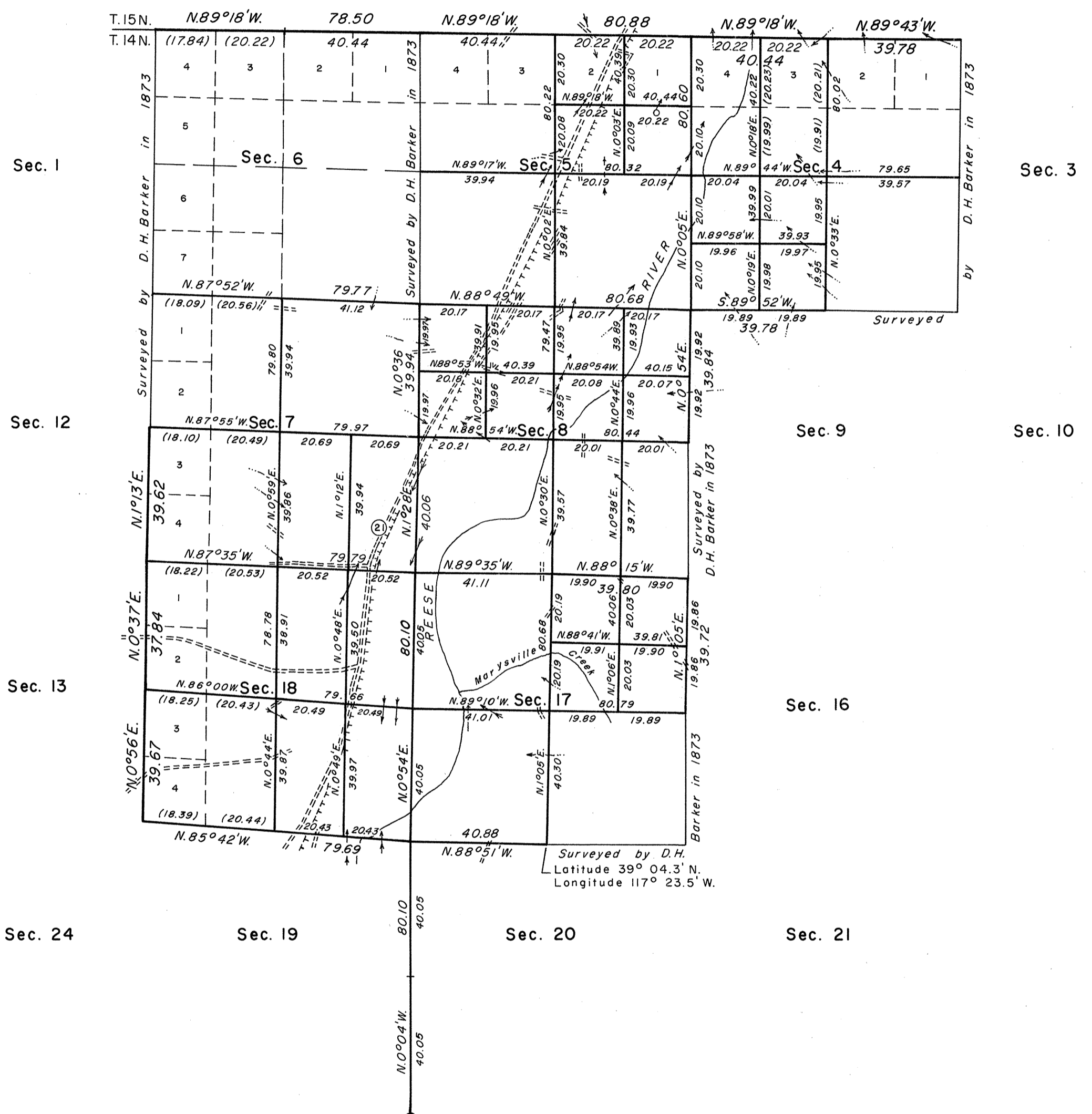


TOWNSHIP 14 NORTH, RANGE 41 EAST, OF THE MOUNT DIABLO MERIDIAN, NEVADA

DEPENDENT RESURVEY AND SUBDIVISION OF SECTIONS

OFFICIALLY FILED
NEVADA STATE OFFICE
10:00 A.M., October 28, 1977

Sec. 36 Sec. 31 Sec. 32 Sec. 33 Sec. 34



A history of surveys is contained in the field notes.

This plat represents a dependent resurvey of portions of the north and west boundaries and a portion of the subdivisional lines designed to restore the corners in their true original locations according to the best available evidence, and the subdivision of sections 4, 5, 7, 8, 17 and 18, T. 14 N., R. 41 E., Mount Diablo Meridian, Nevada.

The lottings and areas are as shown on the plat approved September 8, 1873, except as new or modified hereon.

The resurvey and subdivision of sections were executed by Michael R. Collie, Cadastral Surveyor, beginning March 8, 1974 and completed April 14, 1974, pursuant to Special Instructions dated February 13, 1974, which provide for the surveys under Group No. 505, Nevada.

UNITED STATES DEPARTMENT OF THE INTERIOR
BUREAU OF LAND MANAGEMENT
Washington, D.C. September 13, 1977

This plat is strictly conformable to the approved field notes, and the survey, having been correctly executed in accordance with the requirements of law and the regulations of this Bureau, is hereby accepted.

For the Director

Bernard W. Fisher
Chief, Division of Cadastral Survey

