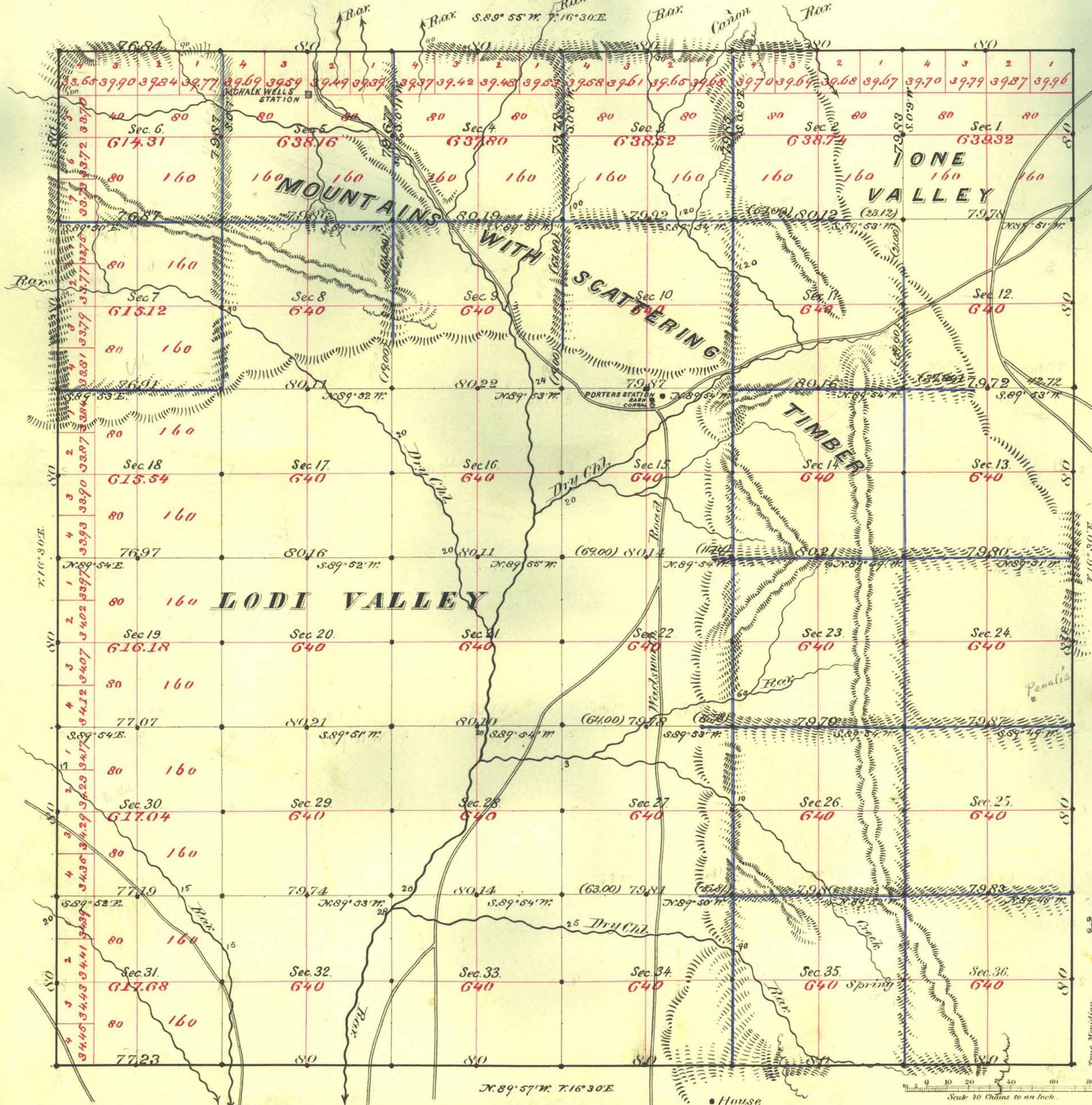


TOWNSHIP N^o 14 NORTH RANGE N^o 37 EAST MOUNT DIABLO MERIDIAN



Aggregate Area of Public Land Surveyed 22888.41 Acres

Commenced May 21st 1883
Completed " 29th "

Subdivisions run with a Var. of 16° 30' East

Survey Designated	By Whom Surveyed	Date of Contract	Amount of Surveys	When Surveyed
Township lines	Stewart & Morrison	March 21 st 1883	23 - 74 - 167	1883
Subdiv ^{ns} black			29 - 72 - 34	
Blue			29 - 71 - 17	

The above Map of Township N^o 14 North of Range N^o 37 East of Mount Diablo Meridian is strictly conformable to the field notes of the survey thereof on file in this Office, which have been examined and approved.

Surveyor General's Office,
Reno Nevada
June 14th 1883

C. C. Covina
Sur. Gen. Nevada