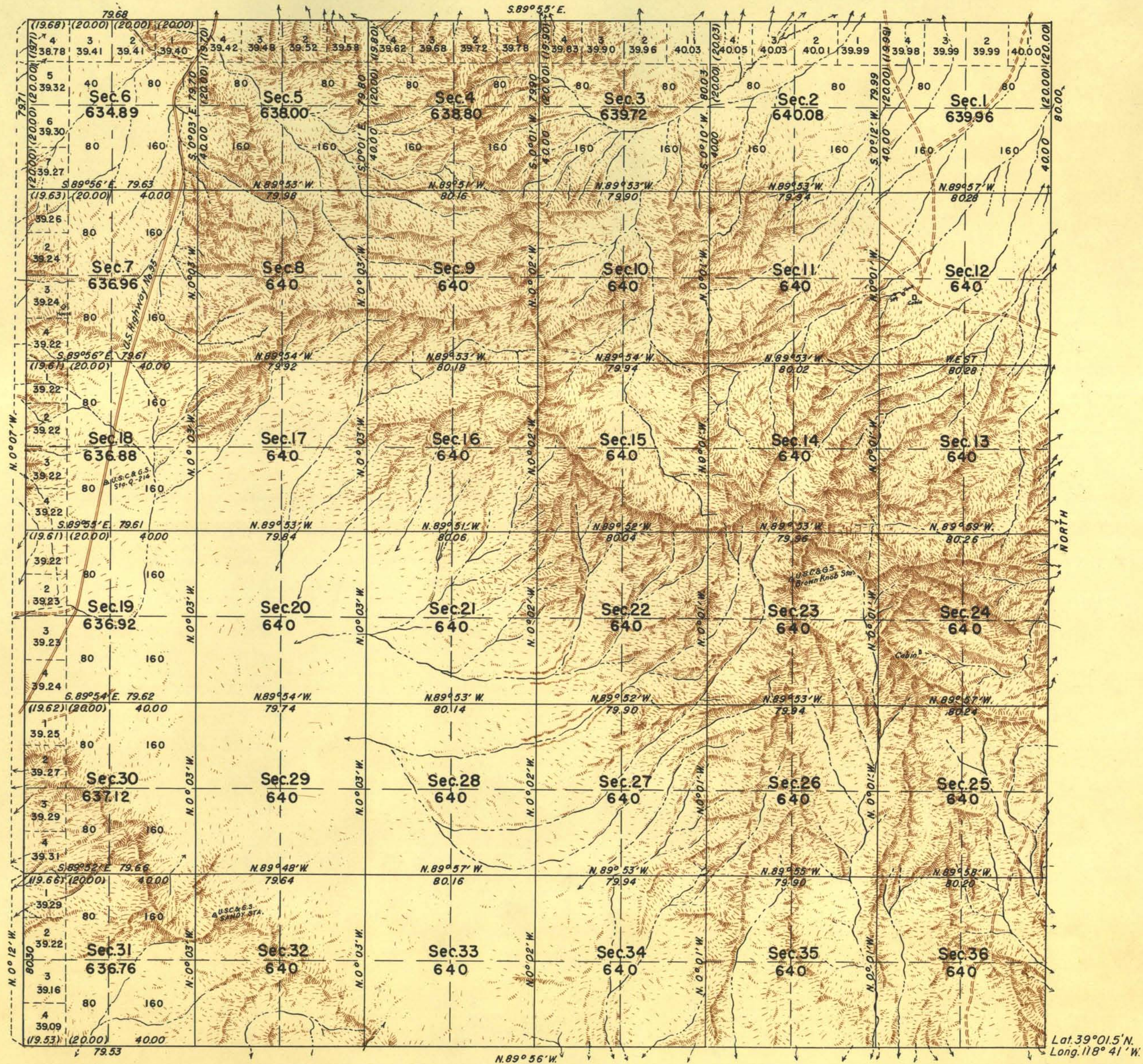
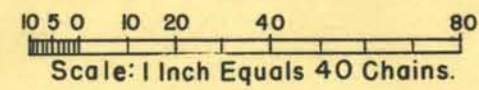


TOWNSHIP N°14 NORTH, RANGE N°29 EAST, OF THE MOUNT DIABLO MERIDIAN, NEVADA.



Lat. 39° 01.5' N.
Long. 118° 41' W.



Area Surveyed, 23,016.09 Acres.

LINES DESIGNATED	BY WHOM SURVEYED	GROUP N°	DATE	MILEAGE		WHEN SURVEYED	
				MLS.	CHS.	BEGUN	COMPLETED
Exterior S. Bdy.	Emil Voigt	66					1920
" N.E.&W.Bdrs.	C.S. Swanholm, Belvel Boyd and C. Devine.	181	Feb. 4, 1937	17	79.69	April 7, 1937	Nov. 2, 1937
Subdivisional		"	"	"	59	78.11	"

UNITED STATES DEPARTMENT OF THE INTERIOR
BUREAU OF LAND MANAGEMENT

Denver, Colorado, November 1, 1946.
This plat is strictly conformable to the field notes of the survey
which have been examined and approved.

[Signature]
Acting Chief Cadastral Engineer.

Washington, D. C., July 11, 1947
The survey represented by this plat, having been correctly
executed in accordance with the requirements of law and the regu-
lations of this office, is hereby accepted.

[Signature]
Assistant Director