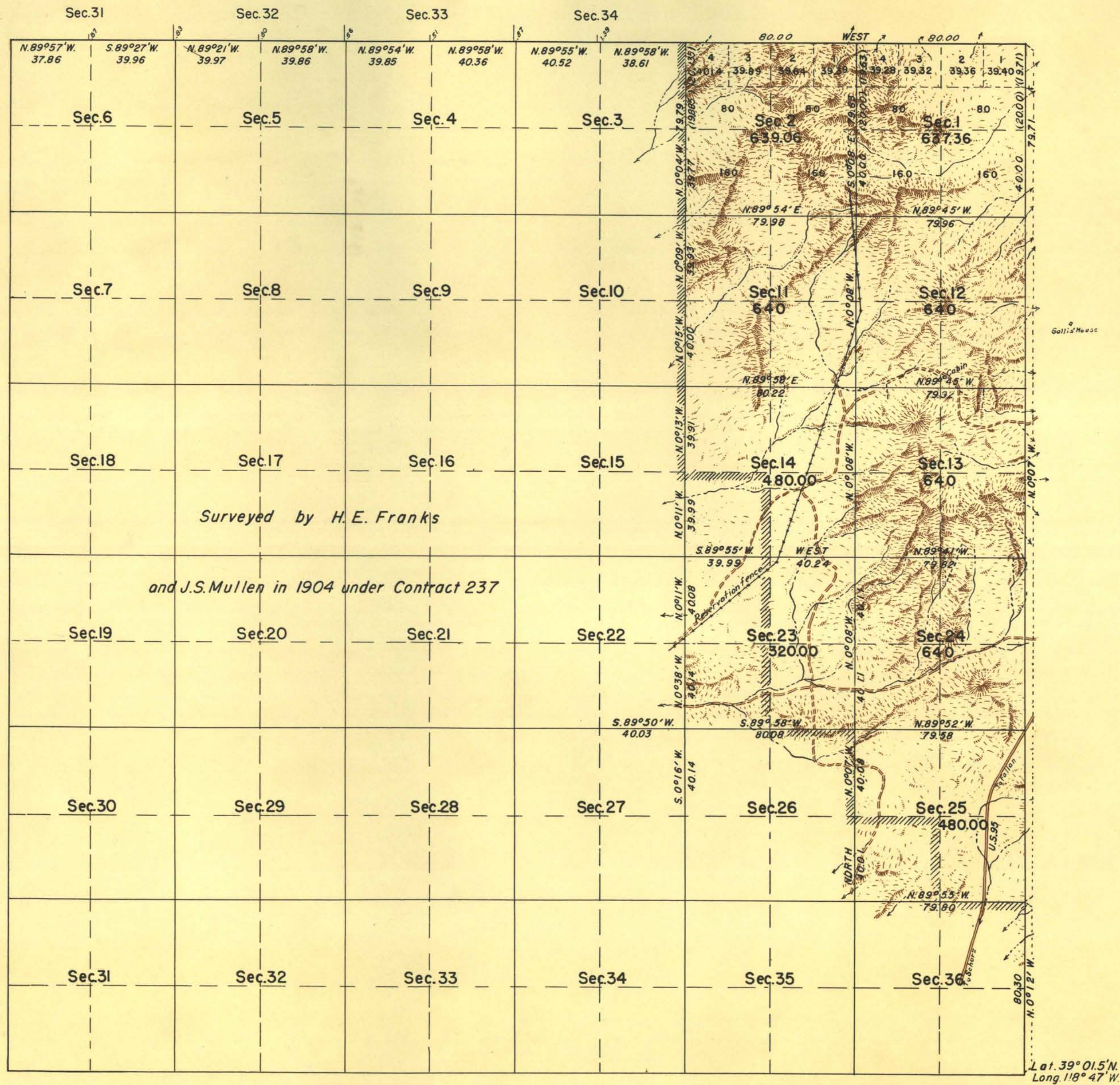


TOWNSHIP N°14 NORTH, RANGE N°28 EAST, OF THE MOUNT DIABLO MERIDIAN, NEVADA.



Surveyed by H. E. Franks
and J.S. Mullen in 1904 under Contract 237

Scale: 1 Inch Equals 40 Chains.

Area surveyed 5,116.42 acres
Area resurveyed 640.00 acres
Total area 5,756.42 acres

LINES DESIGNATED	BY WHOM SURVEYED	GROUP		MILEAGE		WHEN SURVEYED	
		N°	DATE	M. S.	CHS.	BEGUN	COMPLETED
Exterior & Subdivisional	H.E. Franks & J.S. Mullen	Cont. 237				1904	
Exterior, E. & N. Bdrs.	C.S. Swanholm, B. Boyd	181	February 4, 1937	8	0.01	April 12, 1937	April 28, 1937
Subdivisional				18	79.54		

UNITED STATES DEPARTMENT OF THE INTERIOR
BUREAU OF LAND MANAGEMENT

Denver, Colorado, November 1, 1946.

This plat is strictly conformable to the field notes of the survey which have been examined and approved.

Washington, D. C., July 11, 1947

The survey represented by this plat, having been correctly executed in accordance with the requirements of law and the regulations of this office, is hereby accepted.

[Signature]

Acting Chief Cadastral Engineer.

[Signature]

Assistant Director