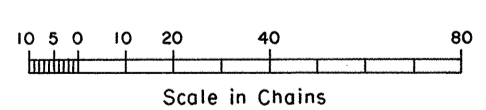
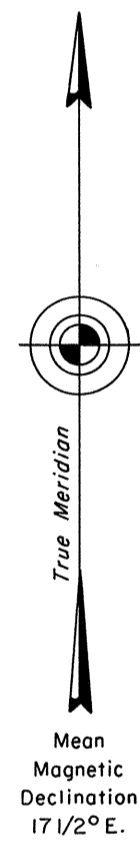
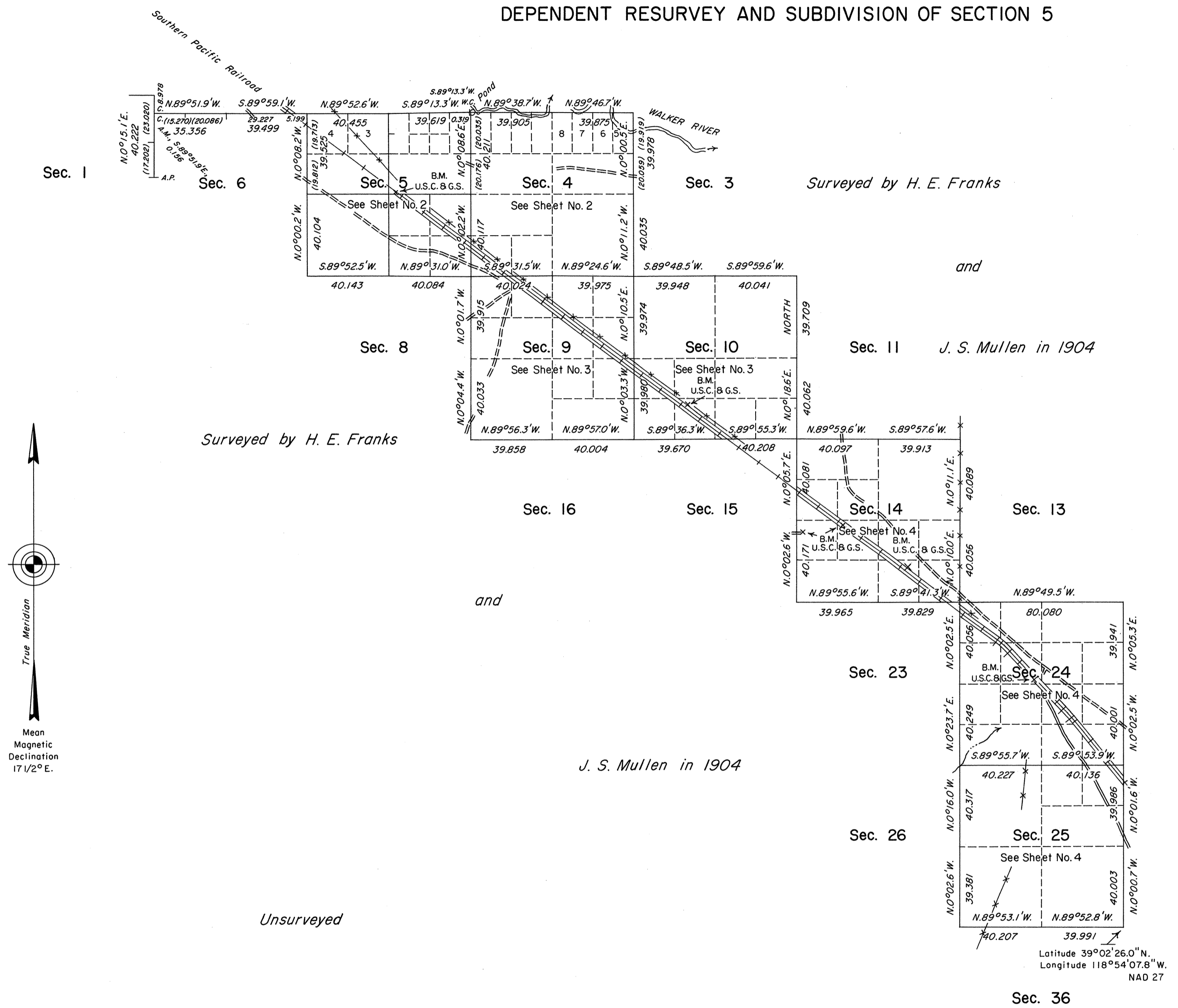


ORIGINAL

Sheet No. 1 of 4 Sheets

# TOWNSHIP 14 NORTH, RANGE 27 EAST, OF THE MOUNT DIABLO MERIDIAN, NEVADA

## DEPENDENT RESURVEY AND SUBDIVISION OF SECTION 5



History of the earlier surveys is contained in the field notes.

This plat, in 4 sheets, represents the dependent resurvey of a portion of the east boundary of T. 14 N., R. 26 E., and a portion of the north and east boundaries and a portion of the subdivisional lines of T. 14 N., R. 27 E., designed to restore the corners in their true original locations according to the best available evidence; and the survey of the subdivision of section 5.

See Sheet Nos. 2 through 4 for enlargements of sections 4, 5, 9, 10, 14, 24 and 25.

Lottings and areas, except as indicated hereon, are as shown on the plat approved October 27, 1905 and the plat accepted April 4, 1979.

Survey executed by Robert A. Pratt, Cadastral Surveyor, beginning March 24, 1989 and completed August 14, 1989, under Special Instructions dated February 3, 1989 and the Supplemental Special Instructions dated August 9, 1989 for Group No. 670, Nevada.

UNITED STATES DEPARTMENT OF THE INTERIOR  
BUREAU OF LAND MANAGEMENT

Reno, Nevada September 27, 1989

This plat is strictly conformable to the approved field notes, and the survey, having been correctly executed in accordance with the requirements of law and the regulations of this Bureau, is hereby accepted.

For the Director

*Lacel E. Bland*

Chief Cadastral Surveyor

T.14N., R.27E., M.D.M.

65

JRM