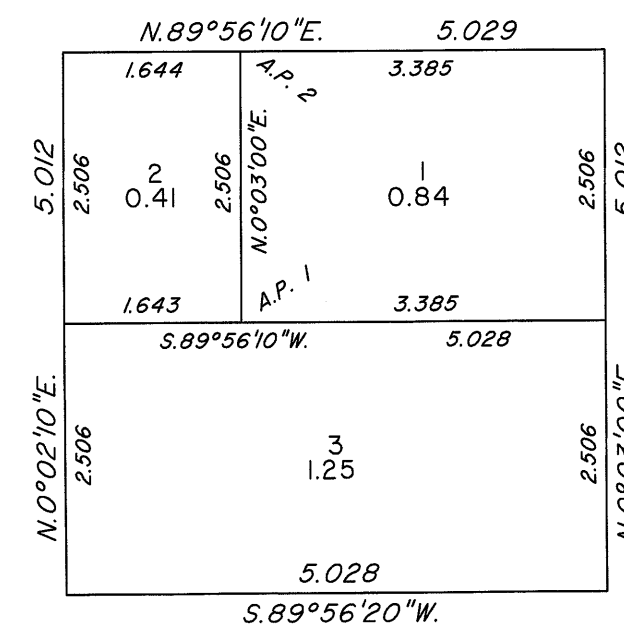


TOWNSHIP 14 NORTH, RANGE 20 EAST, OF THE MOUNT DIABLO MERIDIAN, NEVADA

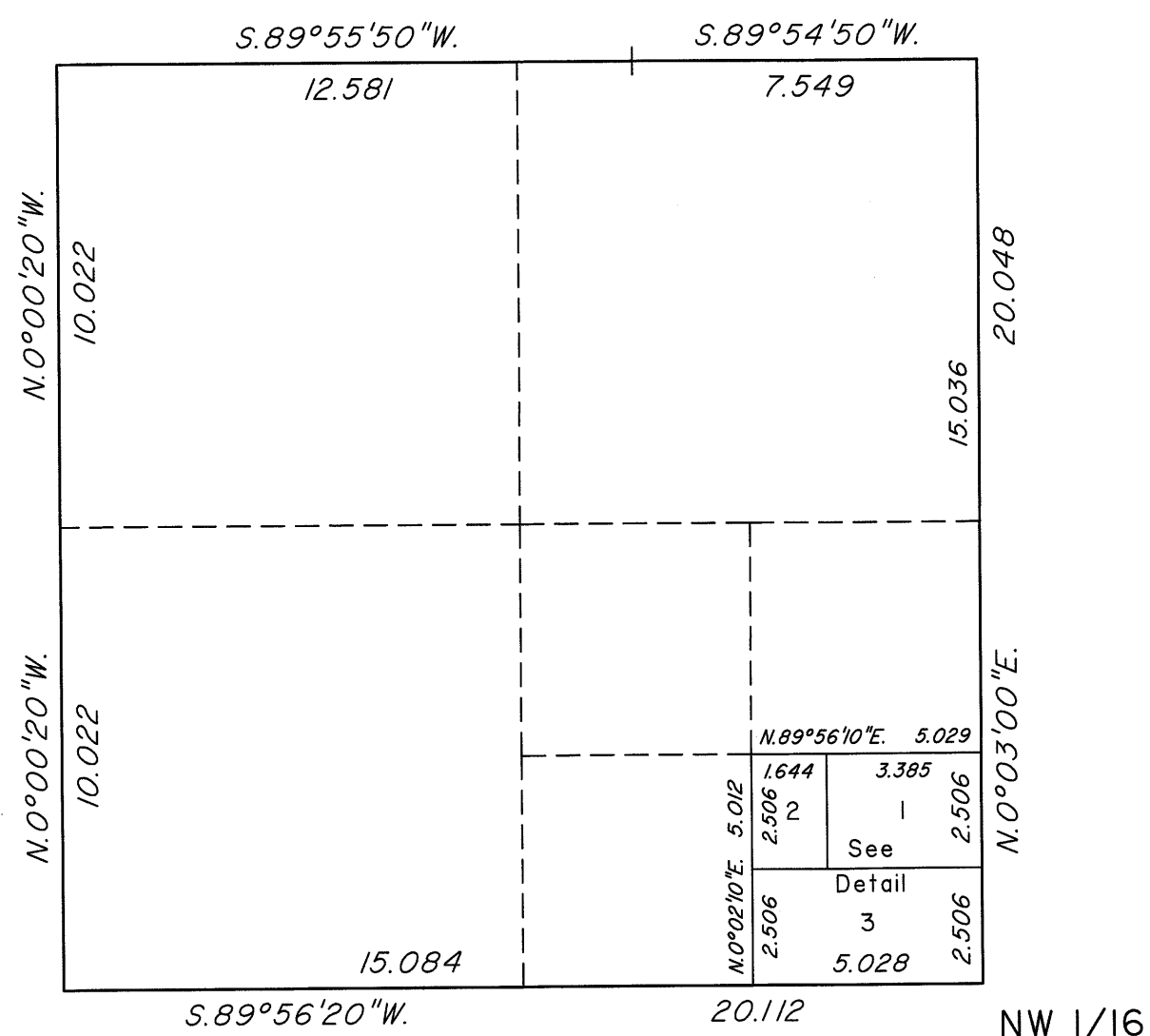
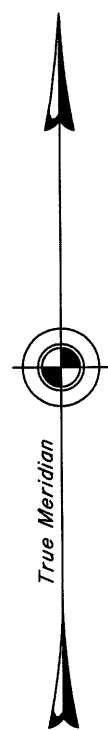
ENLARGED DIAGRAM OF NW1/4 NW1/4 SECTION 8

OFFICIALLY FILED
NEVADA STATE OFFICE
AT 10:00 AM on May 31, 2011

Detail
Not to Scale



Reference should be made to Sheet No. 1 for survey information.



UNITED STATES DEPARTMENT OF THE INTERIOR
BUREAU OF LAND MANAGEMENT

Reno, Nevada May 27, 2011

This plat is strictly conformable to the approved field notes, and the survey, having been correctly executed in accordance with the requirements of law and the regulations of this Bureau, is hereby accepted.

For the Director

Chief Cadastral Surveyor for Nevada

