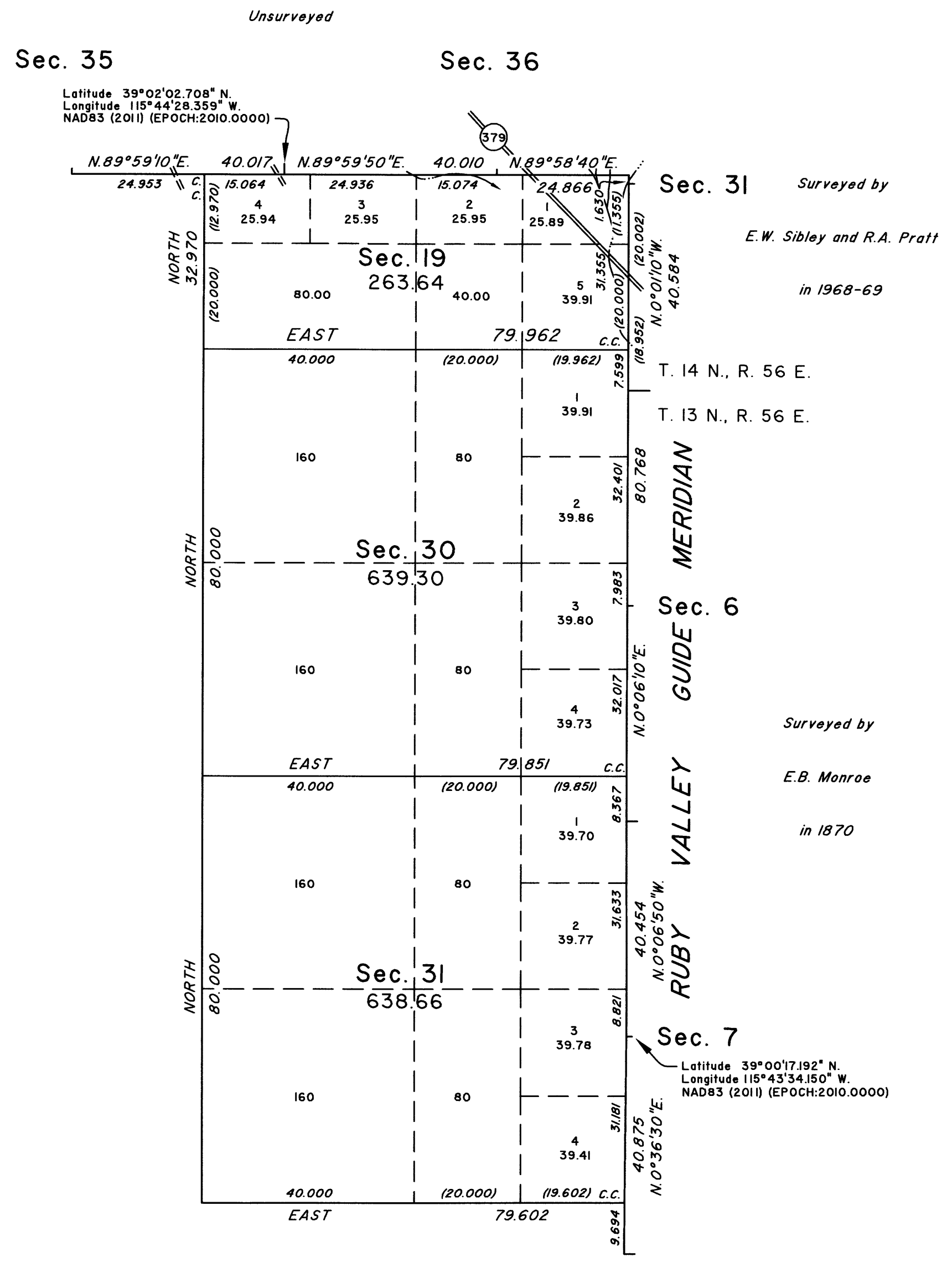
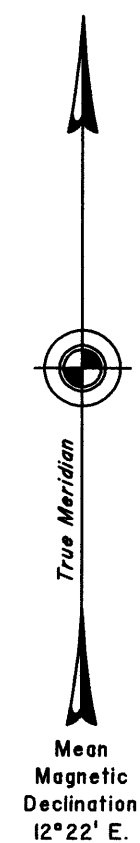
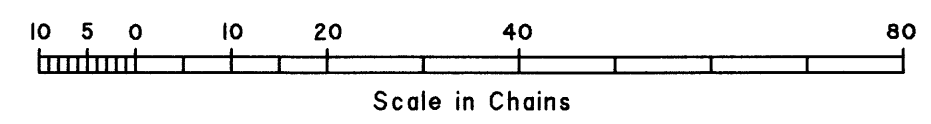


TOWNSHIP 13 1/2 NORTH, RANGE 55 1/2 EAST, OF THE MOUNT DIABLO MERIDIAN, NEVADA

DEPENDENT RESURVEY AND SURVEY



TOTAL AREA SURVEYED = 1541.60 ACRES



A history of surveys is contained in the field notes.

The dependent resurvey of a portion of the west boundary of Township 13 North, Range 56 East and a portion of the south boundary of Township 14 North, Range 55 East, and the survey of the north boundary of Township 13 North, Range 55 1/2 East and the survey of the east boundary of Township 13 1/2 North, Range 55 East, were executed concurrently under this same Group.

This plat represents the dependent resurvey of portions of the west boundaries of Townships 13 and 14 North, Range 56 East (Ruby Valley Guide Meridian) and a portion of the south boundary of Township 14 North, Range 55 East, designed to restore the corners in their true original locations according to the best available evidence, and the survey of the subdivisional lines of Township 13 1/2 North, Range 55 1/2 East, Mount Diablo Meridian, Nevada.

Survey executed by Brandon G. Courtright, Cadastral Surveyor, beginning July 28, 2017 and completed October 4, 2019, pursuant to Special Instructions dated July 25, 2017, and Amended Special Instructions dated October 3, 2019 for Group No. 974, Nevada.

UNITED STATES DEPARTMENT OF THE INTERIOR
BUREAU OF LAND MANAGEMENT

Reno, Nevada December 3, 2019

This plat is strictly conformable to the approved field notes, and the survey, having been correctly executed in accordance with the requirements of law and the regulations of this Bureau, is hereby accepted.

For the Director

Michael J. Hummer

Chief Cadastral Surveyor for Nevada