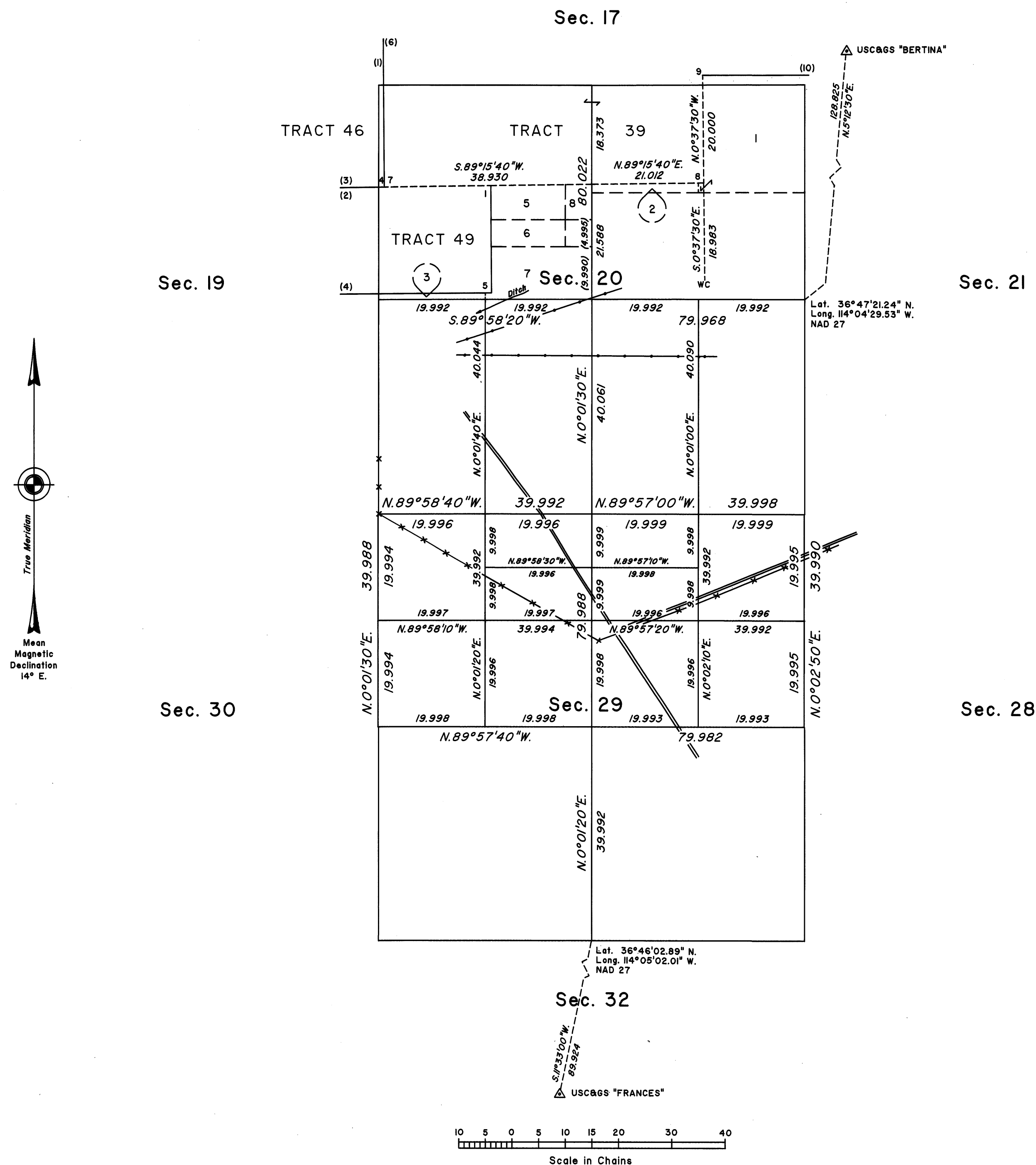


TOWNSHIP 13 SOUTH, RANGE 71 EAST, OF THE MOUNT DIABLO MERIDIAN, NEVADA

DEPENDENT RESURVEY AND SUBDIVISION OF SECTIONS 20 AND 29



A history of surveys is contained in the field notes.

This plat represents the dependent resurvey of a portion of the subdivisional lines, designed to restore the corners in their original locations according to the best available evidence, and the subdivision of sections 20 and 29, Township 13 South, Range 71 East, Mount Diablo Meridian, Nevada.

The lottings and areas are as shown on the plat approved December 2, 1881, and the plats accepted May 16, 1935 and April 22, 1981.

For those surveyed lines not showing bearings and distances, refer to the official records of 1935 and 1981.

Survey executed by Richard A. Zaninovich, Cadastral Surveyor, beginning February 8, 1994, and completed March 24, 1994, pursuant to Special Instructions dated February 7, 1994, for Group No. 744, Nevada.

UNITED STATES DEPARTMENT OF THE INTERIOR
BUREAU OF LAND MANAGEMENT

Reno, Nevada

October 20, 1995

This plat is strictly conformable to the approved field notes, and the survey, having been correctly executed in accordance with the requirements of law and the regulations of this Bureau, is hereby accepted.

For the Director

Robert H. Thompson

Acting Chief Cadastral Surveyor, Nevada

T.13S.,R.71E.,M.D.M.