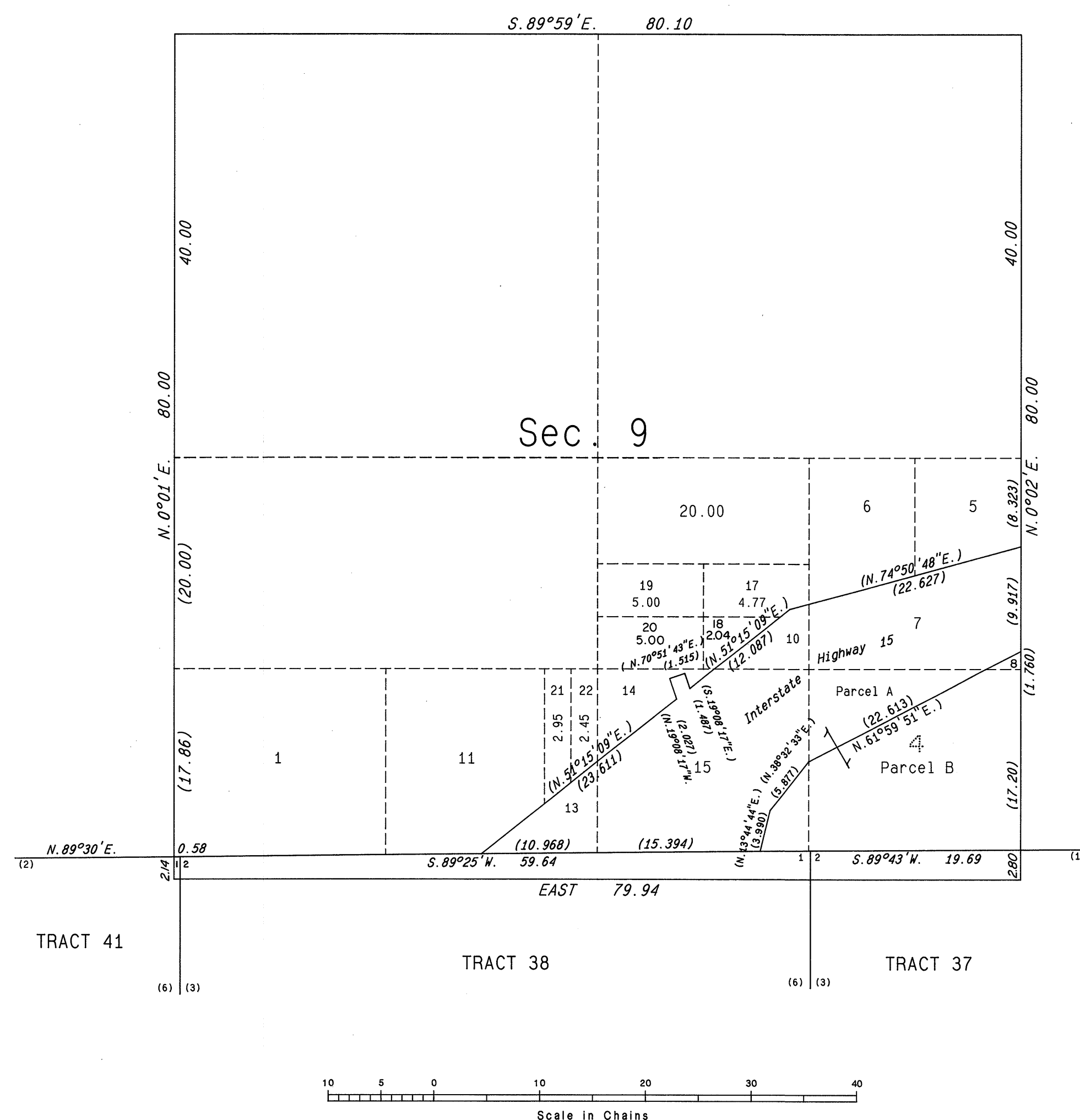
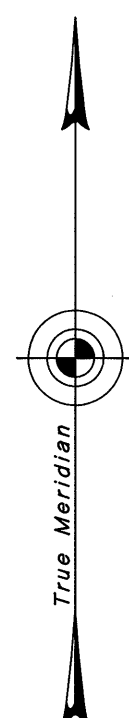


ORIGINAL

OFFICIALLY FILED
NEVADA STATE OFFICE
10:00 a.m. October 1, 1985

TOWNSHIP 13 SOUTH, RANGE 71 EAST, OF THE MOUNT DIABLO MERIDIAN, NEVADA
SUPPLEMENTAL PLAT OF SECTION 9



This plat, showing a subdivision of original lots 9 and 12, T. 13 S., R. 71 E., Mount Diablo Meridian, Nevada, is based upon the plat accepted May 16, 1935, the Nevada Department of Highways right-of-way application dated August 10, 1966, the supplemental application dated October 6, 1972, and the supplemental plat accepted March 24, 1981.

UNITED STATES DEPARTMENT OF THE INTERIOR
BUREAU OF LAND MANAGEMENT

Reno, Nevada September 12, 1985

This plat, showing amended lottings, is based upon the official records and, having been correctly prepared in accordance with the regulations of this Bureau, is hereby accepted.

For the Director

Lacel E. Bland

Chief Cadastral Surveyor

JAB/GMJ

JRM

T. 13 S., R. 71 E., M.D.M.