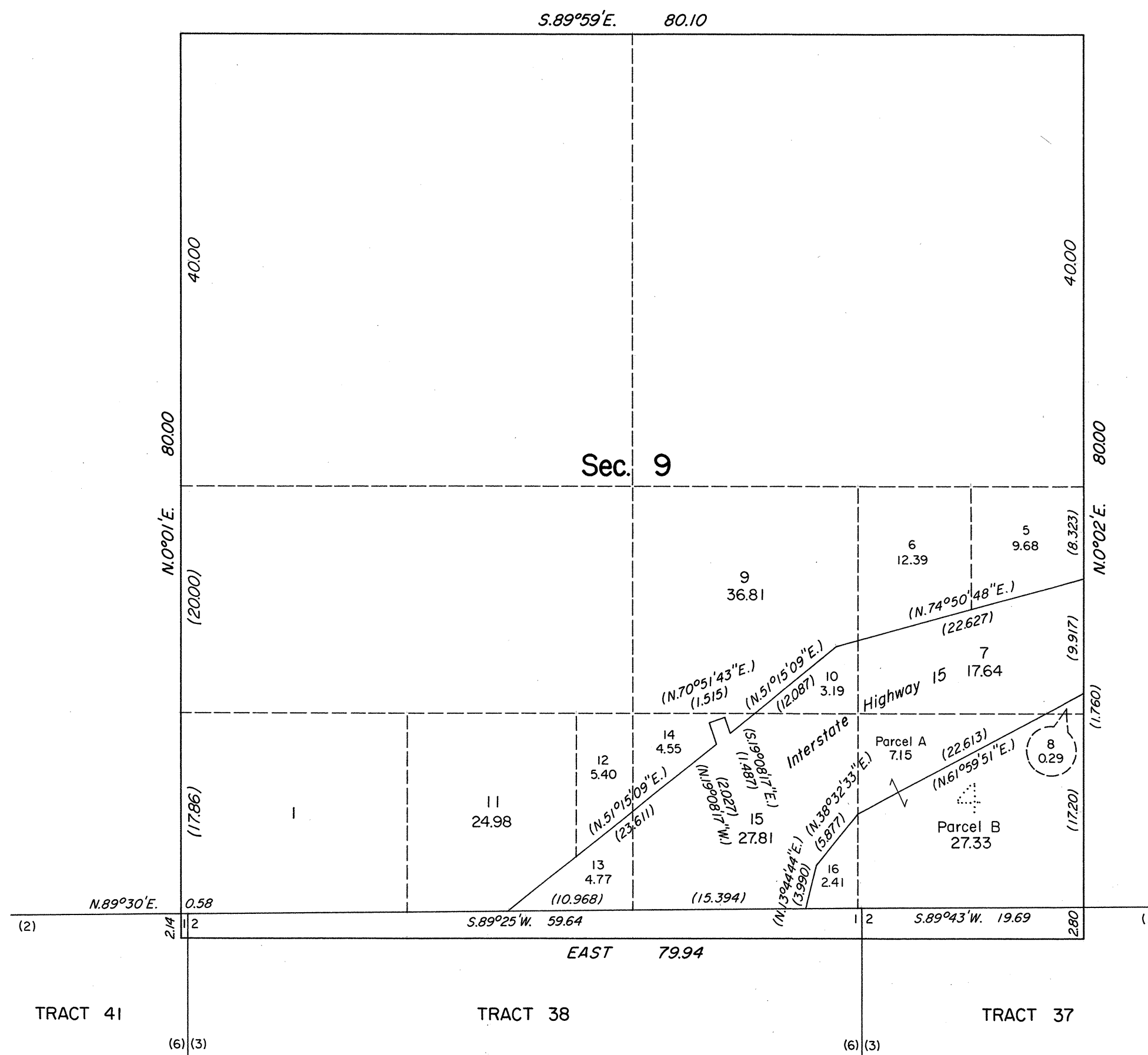


ORIGINAL

OFFICIALLY FILED  
NEVADA STATE OFFICE  
10:00 AM MAY 15, 1981

TOWNSHIP 13 SOUTH, RANGE 71 EAST, OF THE MOUNT DIABLO MERIDIAN, NEVADA  
SUPPLEMENTAL PLAT OF SECTION 9

This plat, showing a subdivision of the N1/2SE1/4 and original lots 2, 3, and 4, T. 13 S., R. 71 E., Mount Diablo Meridian, Nevada, is based upon the plat accepted May 16, 1935, and the Nevada Department of Highways right-of-way application dated August 10, 1966, and the supplemental application dated October 6, 1972.



UNITED STATES DEPARTMENT OF THE INTERIOR  
BUREAU OF LAND MANAGEMENT  
Denver, Colorado March 24, 1981

This plat, showing amended lottings, is based upon the official records and, having been correctly prepared in accordance with the requirements of this Bureau, is hereby accepted.

For the Director

*J. Barker*

Chief, Cadastral Survey  
Examination and Approval Staff