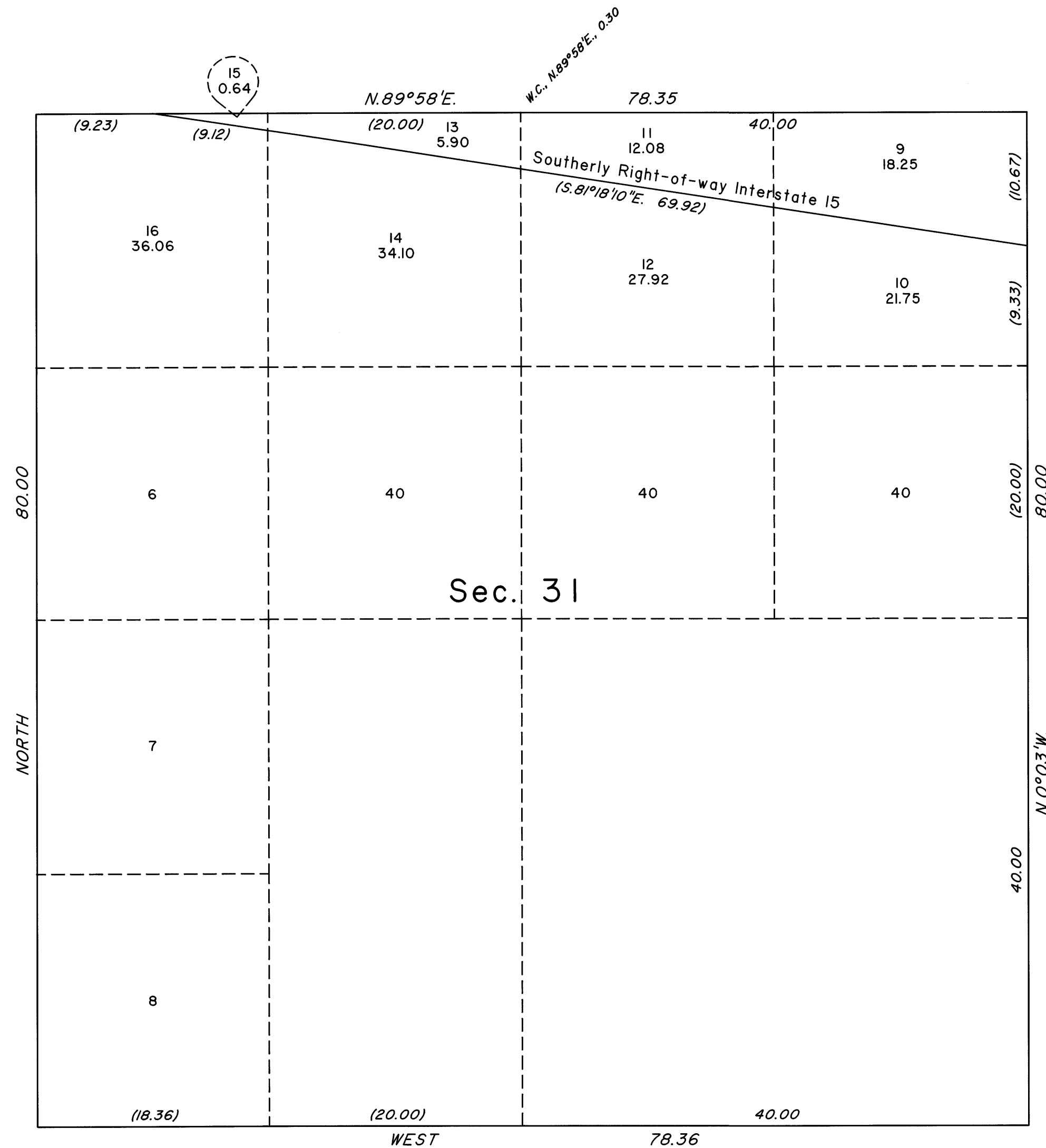


ORIGINAL

OFFICIALLY FILED  
NEVADA STATE OFFICE  
at 10:00 AM on August 2, 2001

TOWNSHIP 13 SOUTH, RANGE 70 EAST, OF THE MOUNT DIABLO MERIDIAN, NEVADA  
SUPPLEMENTAL PLAT OF SECTION 31



This plat, showing amended lottings in sec. 31, T.13S., R.70E., Mount Diablo Meridian, Nevada, is based upon the plat approved December 2, 1881, and the plat in two sheets approved April 17, 1935, and accepted May 16, 1935, and the Nevada Department of Highways right-of-way maps dated September 28, 1964, application number NEV 065014.

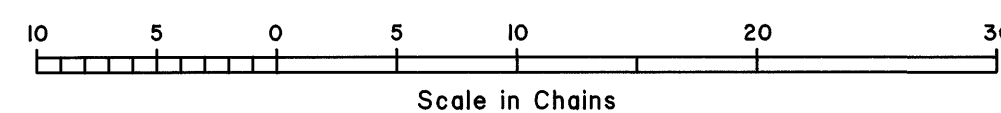
UNITED STATES DEPARTMENT OF THE INTERIOR  
BUREAU OF LAND MANAGEMENT

Reno, Nevada July 31, 2001

This plat, showing amended lottings, is based upon the official records, and having been correctly prepared in accordance with the regulations of this Bureau, is hereby accepted.

For the Director

Chief Cadastral Surveyor, Nevada



T.13S., R.70E., M.D.M.