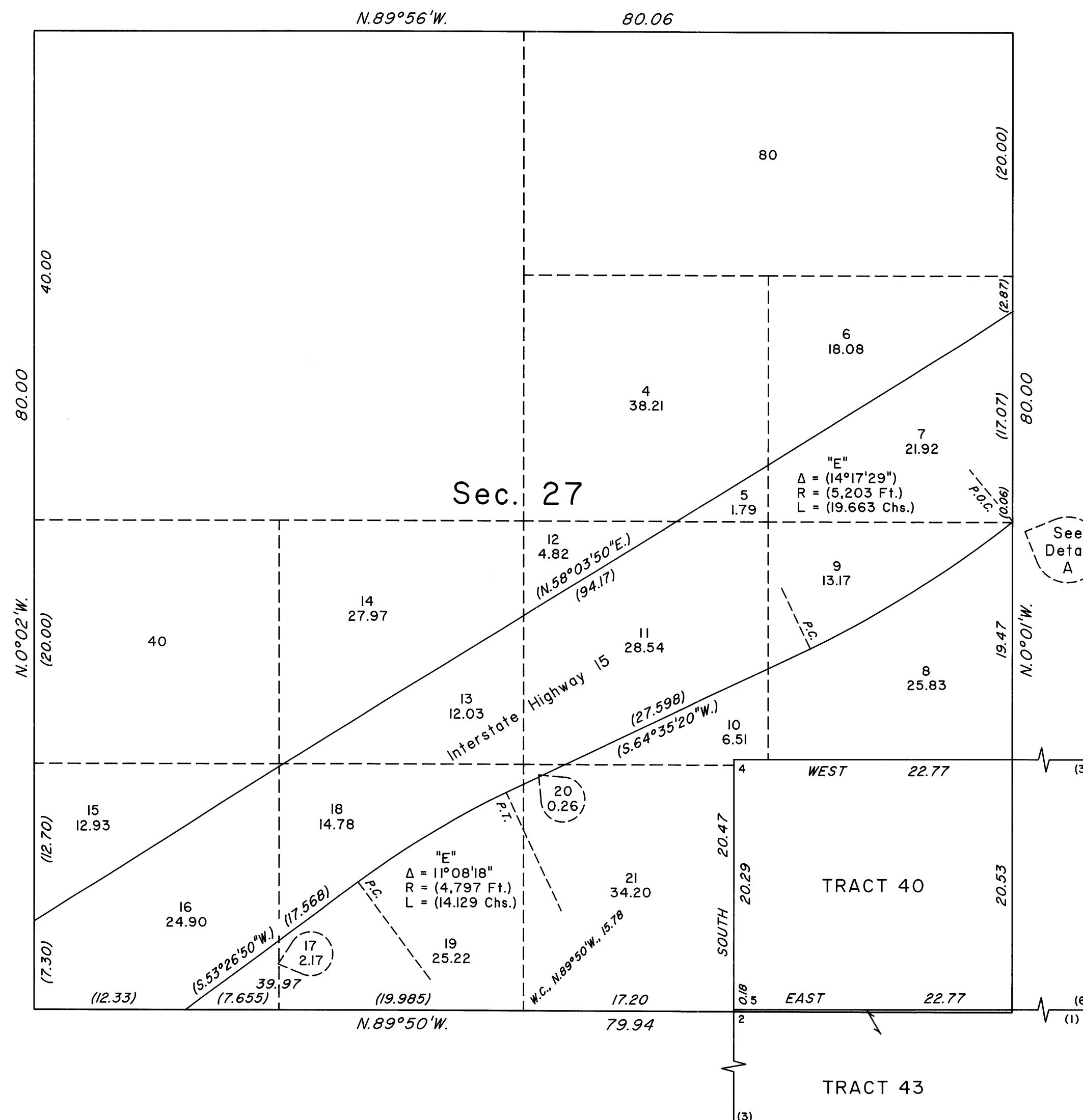


ORIGINAL

OFFICIALLY FILED
NEVADA STATE OFFICE
at 10:00 AM on August 2, 2001

TOWNSHIP 13 SOUTH, RANGE 70 EAST, OF THE MOUNT DIABLO MERIDIAN, NEVADA
SUPPLEMENTAL PLAT OF SECTION 27

DETAIL A
Not to Scale



This plat, showing amended lottings in sec. 27, T.13S., R.70E., Mount Diablo Meridian, Nevada, is based upon the plat approved December 2, 1881, and the plat in two sheets approved April 17, 1935, and accepted May 16, 1935, and the Nevada Department of Highways right-of-way maps dated September 28, 1964, application number NEV 065014.

UNITED STATES DEPARTMENT OF THE INTERIOR
BUREAU OF LAND MANAGEMENT

Reno, Nevada July 31, 2001

This plat, showing amended lottings, is based upon the official records, and having been correctly prepared in accordance with the regulations of this Bureau, is hereby accepted.

For the Director

Chief Cadastral Surveyor, Nevada

T.13S., R.70E., M.D.M.