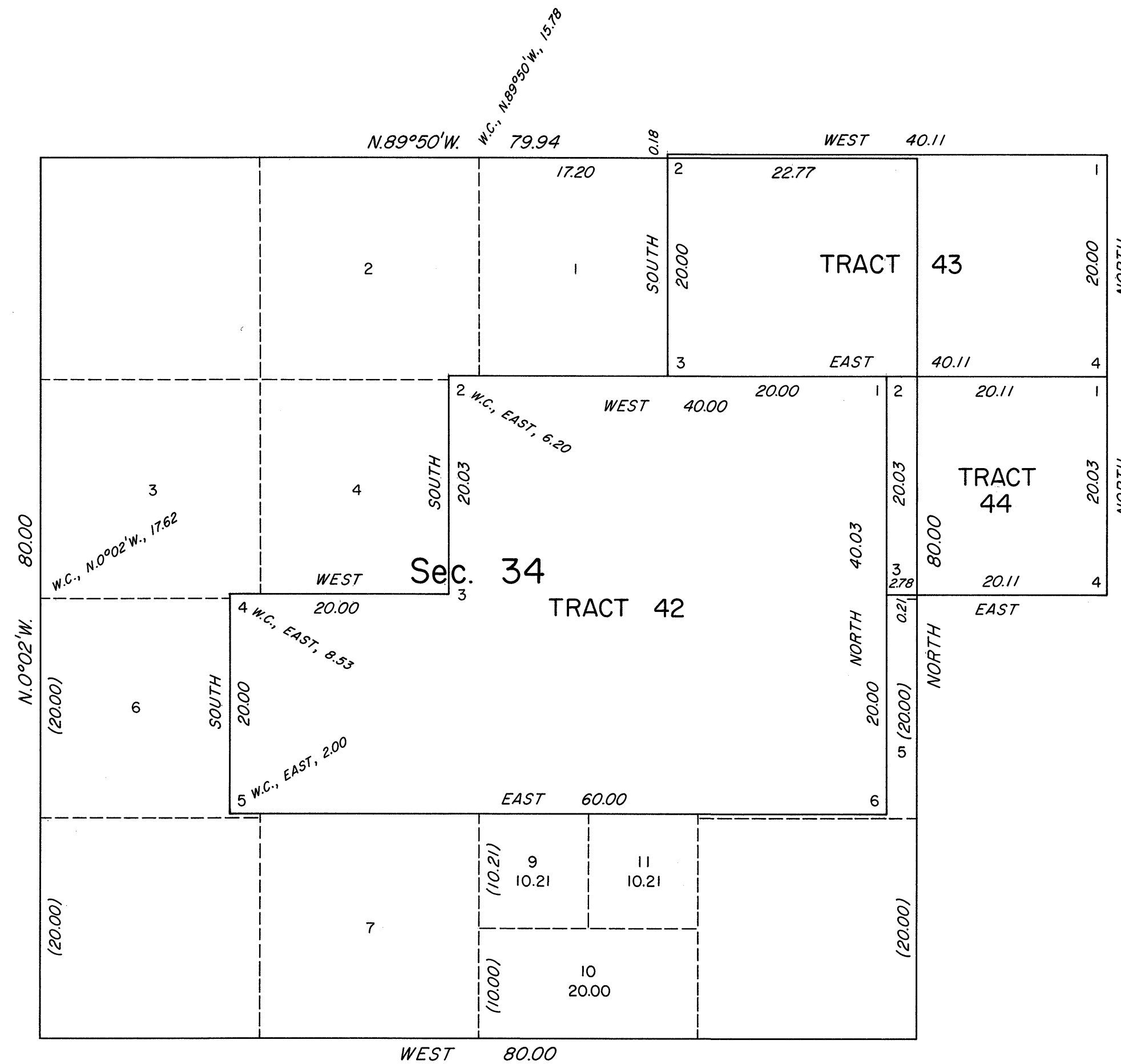
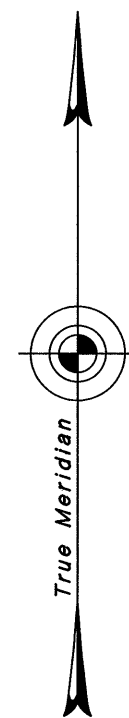


TOWNSHIP 13 SOUTH, RANGE 70 EAST, OF THE MOUNT DIABLO MERIDIAN, NEVADA
SUPPLEMENTAL PLAT OF SECTION 34



This plat, showing a subdivision of original lot 8, T. 13 S., R. 70 E., Mount Diablo Meridian, Nevada, is based upon the plat approved December 2, 1881, and the plat in two sheets approved April 17, 1935, and accepted May 16, 1935.

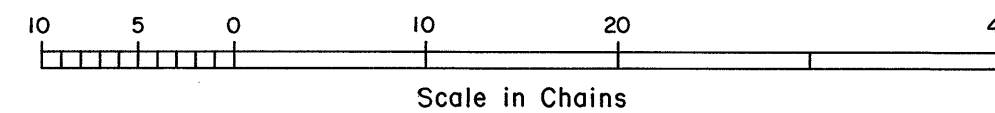
UNITED STATES DEPARTMENT OF THE INTERIOR
BUREAU OF LAND MANAGEMENT

Reno, Nevada July 21, 1987

This plat, showing amended lottings, is based upon the official records, and having been correctly prepared in accordance with the regulations of this Bureau, is hereby accepted.

For the Director

Lucel E. Bland
Chief Cadastral Surveyor



T. 13 S., R. 70 E., M.D.M.

close