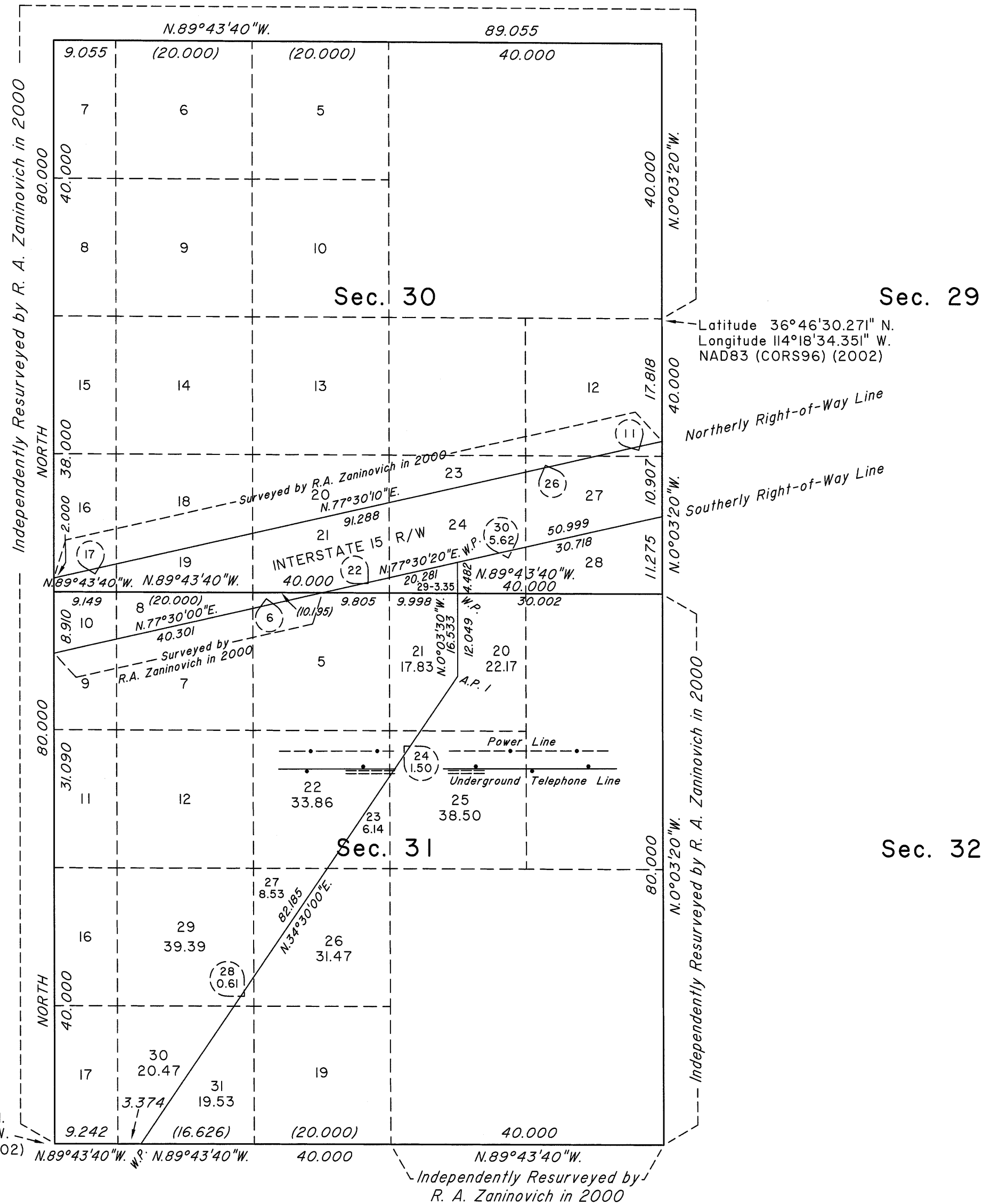
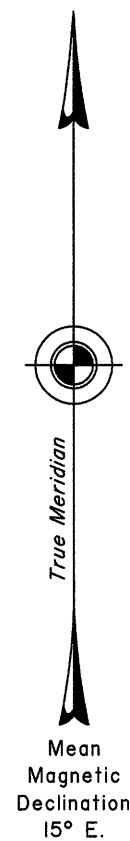


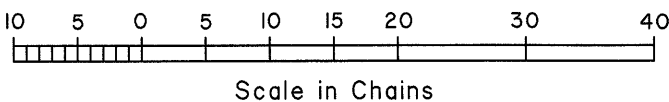
TOWNSHIP 13 SOUTH, RANGE 69 EAST, OF THE MOUNT DIABLO MERIDIAN, NEVADA

DEPENDENT RESURVEY AND METES-AND-BOUNDS SURVEY



Lat. 36°45'12.244" N.
Long. 114°19'46.624" W.
NAD83 (CORS96) (2002)

TOTAL AREA OF FEDERAL INTEREST LAND RESURVEYED = 1426.38 ACRES



A history of surveys is contained in the field notes.

A portion of the south boundary was dependently resurveyed concurrently under this same group.

This plat represents the dependent resurvey of a portion of the subdivisional lines and the southerly right-of-way line of Interstate Highway No. 15 through section 30 designed to restore the corners in their true original locations according to the best available evidence and a metes-and-bounds survey in sections 30 and 31, Township 13 South, Range 69 East, Mount Diablo Meridian, Nevada.

Except as indicated hereon, the lottings and areas are as shown on the plat accepted May 31, 2001.

Survey executed by Don R. Aschenbach, Cadastral Surveyor, beginning January 12, 2010, and completed October 30, 2010, pursuant to Special Instructions dated January 6, 2010, for Group No. 890, Nevada.

UNITED STATES DEPARTMENT OF THE INTERIOR
BUREAU OF LAND MANAGEMENT

Reno, Nevada July 6, 2011

This plat is strictly conformable to the approved field notes, and the survey, having been correctly executed in accordance with the requirements of law and the regulations of this Bureau, is hereby accepted.

For the Director

Chief Cadastral Surveyor for Nevada

T.13S., R.69E., M.D.M.