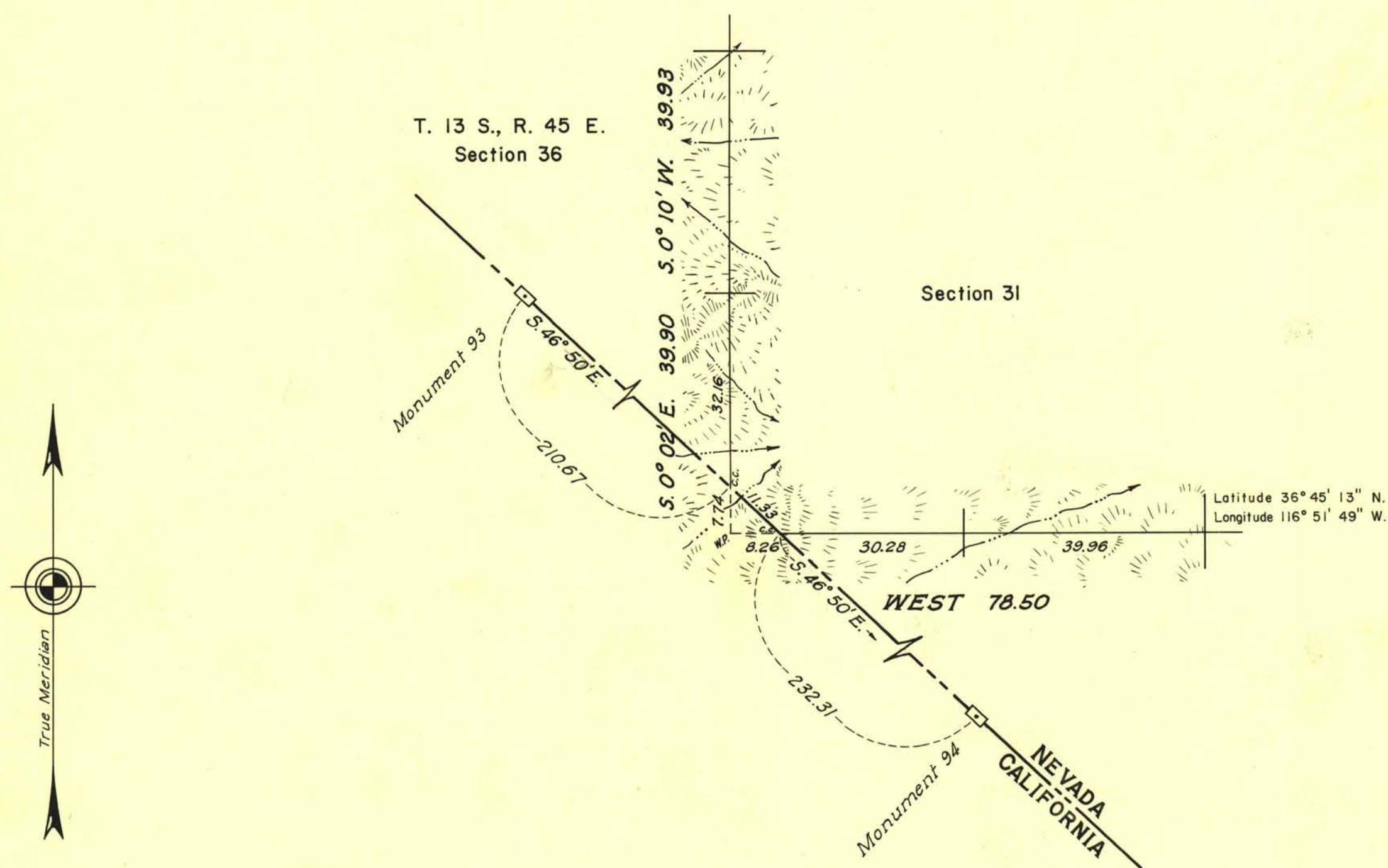


TOWNSHIP 13 SOUTH, RANGE 46 EAST, OF THE MOUNT DIABLO MERIDIAN, NEVADA. DEPENDENT RESURVEY



The dependent resurvey of a portion of the south and west boundaries was executed by Wilson McConkie, March 20 to April 10, 1942, under special instructions dated December 3, 1938 for Group 254, Nevada.

This plat represents a dependent resurvey of a portion of the south and west boundaries designed to restore all corners in their true original locations according to the best available evidence.

The west boundary shown hereon represents a portion of the east boundary of the Death Valley National Monument.

UNITED STATES DEPARTMENT OF THE INTERIOR
BUREAU OF LAND MANAGEMENT
Washington, D. C. June 23, 1955

This plat is strictly conformable to the approved field notes, and the survey, having been correctly executed in accordance with the requirements of law and the regulations of this Bureau, is hereby accepted.

For the Director

Carl S. Harrington
Cadastral Engineering Staff Officer

