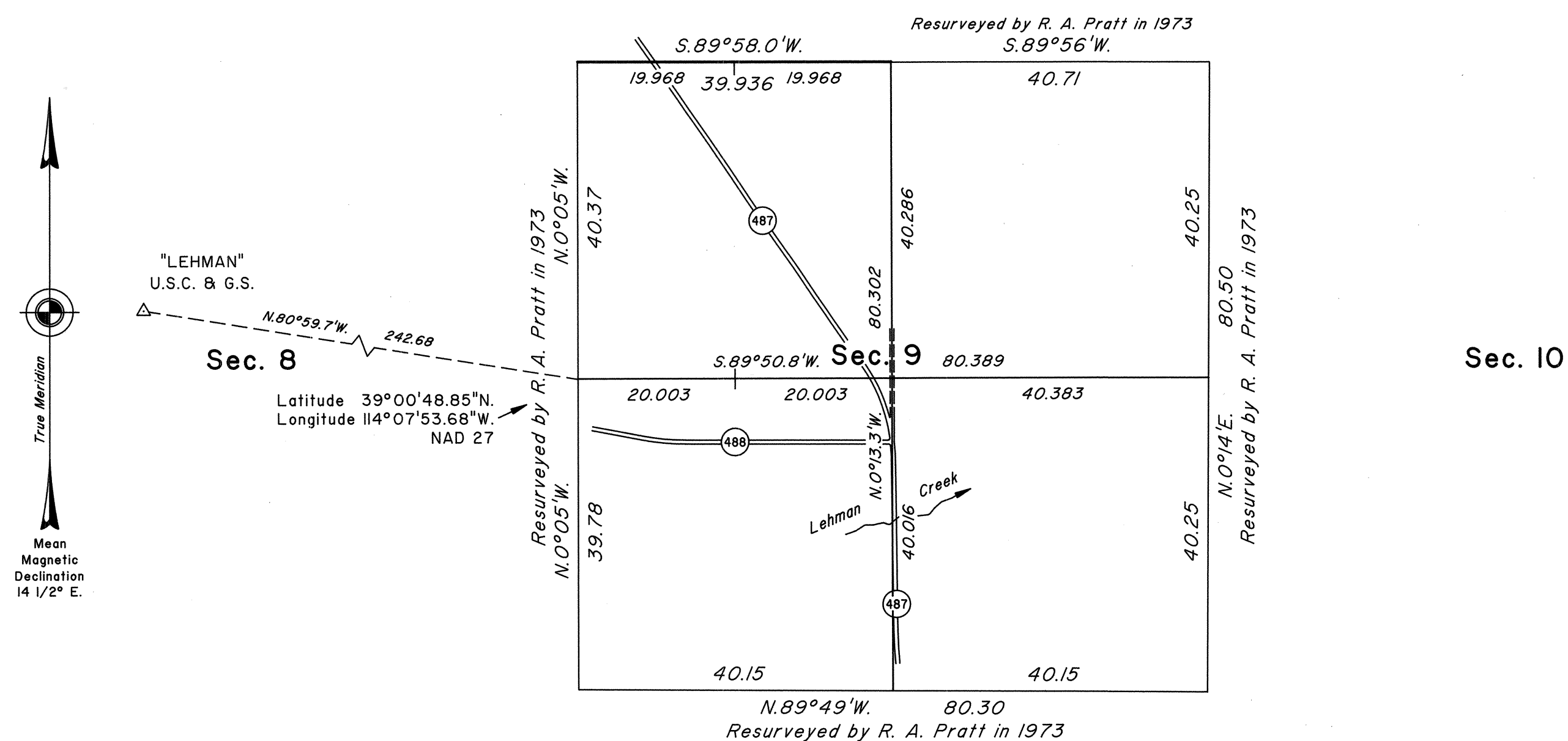


TOWNSHIP 13 NORTH, RANGE 70 EAST, OF THE MOUNT DIABLO MERIDIAN, NEVADA  
DEPENDENT RESURVEY AND SUBDIVISION OF SECTION 9

Sec. 4



A history of surveys is contained in the field notes.

This plat represents the dependent resurvey of a portion of the subdivisional lines and the subdivision of section 9, Township 13 North, Range 70 East, Mount Diablo Meridian, Nevada.

The areas are as shown on the plat approved February 17, 1879.

Survey executed by Robert A. Pratt, Cadastral Surveyor, beginning October 20, 1992, and completed November 10, 1993, pursuant to Special Instructions dated September 16, 1992, for Group No. 727, Nevada.

UNITED STATES DEPARTMENT OF THE INTERIOR  
BUREAU OF LAND MANAGEMENT

Reno, Nevada November 30, 1993

This plat is strictly conformable to the approved field notes, and the survey, having been correctly executed in accordance with the requirements of law and the regulations of this Bureau, is hereby accepted.

For the Director

Chief Cadastral Surveyor, Nevada