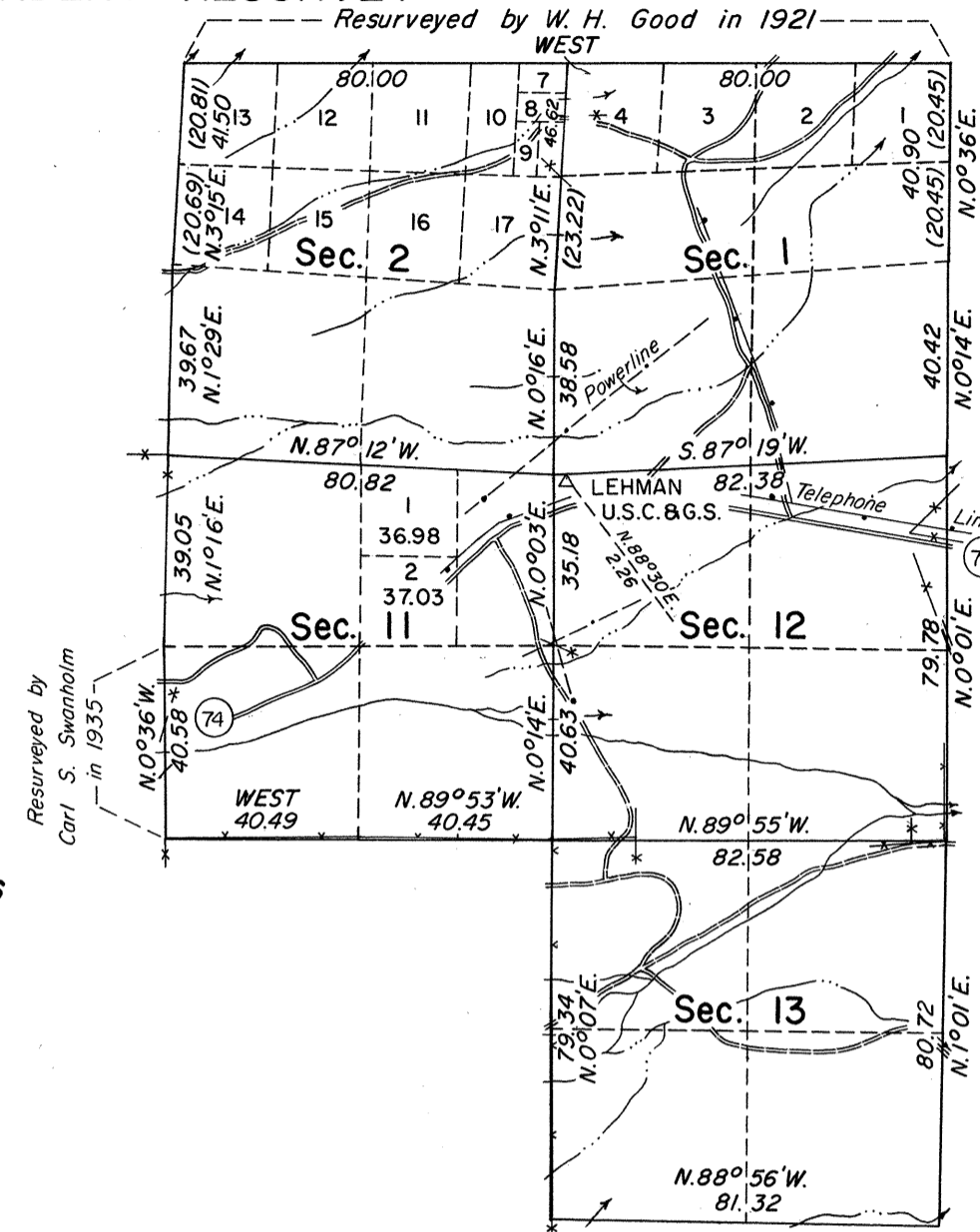


# TOWNSHIP 13 NORTH, RANGE 69 EAST, OF THE MOUNT DIABLO MERIDIAN, NEVADA.

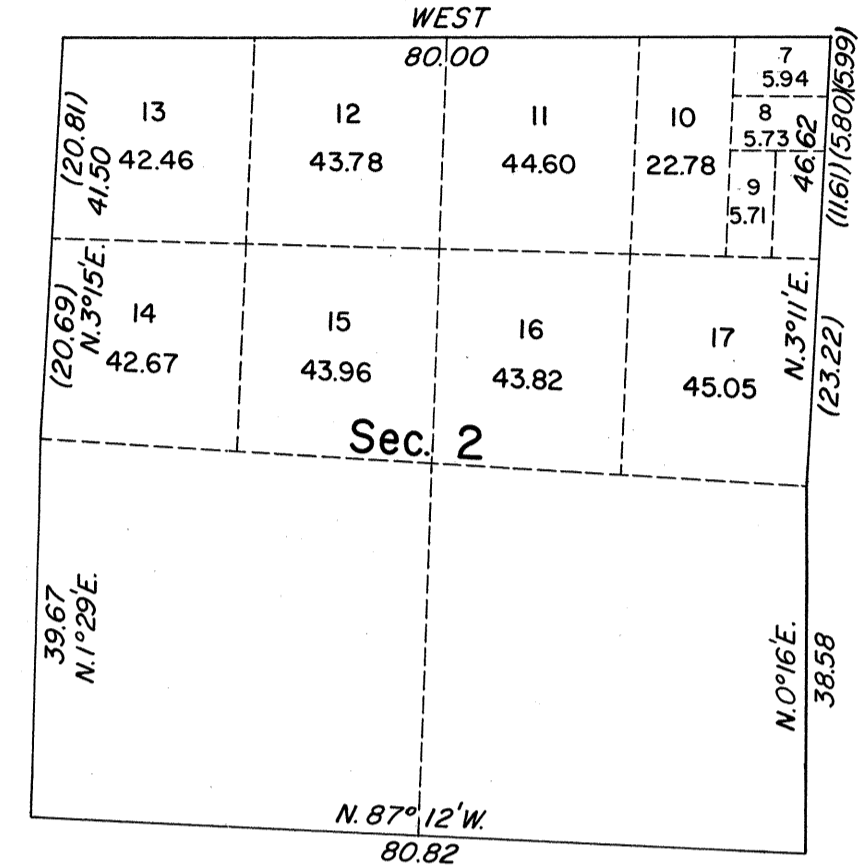
## DEPENDENT RESURVEY



Unsurveyed

Lehman Caves  
National Mon.  
Surveyed by  
Carl S. Swanholm  
in 1935

## ENLARGED DIAGRAM



Latitude 38°59'31"N.  
Longitude 114°10'08"W.

A history of surveys is contained in the field notes.

A dependent resurvey of the east boundary was executed concurrently under T. 13 N., R. 70 E., of this Group.

This plat represents a dependent resurvey of a portion of the subdivisional lines of T. 13 N., R. 69 E., designed to restore the corners in their true original locations according to the best available evidence.

Lotings and areas, except as indicated hereon, are as shown on the plat approved February 17, 1879 and the plat accepted June 4, 1959.

Survey executed by Robert A. Pratt, Cadastral Surveyor, November 27 to December 13, 1973, under Special Instructions dated September 4, 1973, for Group No. 503, Nevada.

UNITED STATES DEPARTMENT OF THE INTERIOR  
BUREAU OF LAND MANAGEMENT  
Washington, D.C. October 1, 1976

This plat is strictly conformable to the approved field notes, and the survey, having been correctly executed in accordance with the requirements of law and the regulations of this Bureau, is hereby accepted.

For the Director

*Bernard W. Taylor*  
Chief, Division of Cadastral Survey

